

**MCHR1 Antibody (N-Terminus)**  
**Rabbit Polyclonal Antibody**  
**Catalog # ALS10389****Specification**

---

**MCHR1 Antibody (N-Terminus) - Product Information**

Application	IHC
Primary Accession	<a href="#">Q99705</a>
Reactivity	Human
Host	Rabbit
Clonality	Polyclonal
Calculated MW	46kDa KDa

**MCHR1 Antibody (N-Terminus) - Additional Information****Gene ID** 2847**Other Names**

Melanin-concentrating hormone receptor 1, MCH receptor 1, MCH-R1, MCHR-1, G-protein coupled receptor 24, MCH-1R, MCH1R, MCHR, SLC-1, Somatostatin receptor-like protein, MCHR1, GPR24, SLC1

**Target/Specificity**

Human MCHR1. BLAST analysis of the peptide immunogen showed no homology with other human proteins.

**Reconstitution & Storage**

Long term: -70°C; Short term: +4°C

**Precautions**

MCHR1 Antibody (N-Terminus) is for research use only and not for use in diagnostic or therapeutic procedures.

**MCHR1 Antibody (N-Terminus) - Protein Information****Name** MCHR1 ([HGNC:4479](#))**Synonyms** GPR24, SLC1**Function**

Receptor for melanin-concentrating hormone, coupled to both G proteins that inhibit adenylyl cyclase and G proteins that activate phosphoinositide hydrolysis.

**Cellular Location**

Cell membrane; Multi-pass membrane protein

**Tissue Location**

Highest level in brain, particularly in the frontal cortex and hypothalamus, lower levels in the liver

and heart

**Volume**

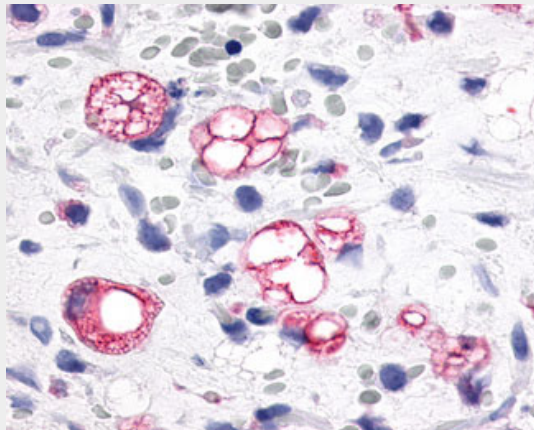
50  $\mu$ l

### **MCHR1 Antibody (N-Terminus) - Protocols**

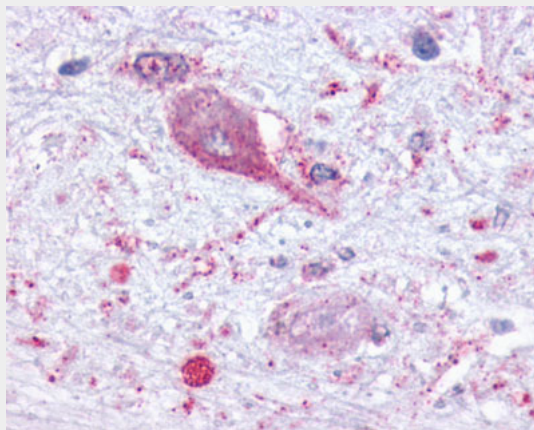
Provided below are standard protocols that you may find useful for product applications.

- [Western Blot](#)
- [Blocking Peptides](#)
- [Dot Blot](#)
- [Immunohistochemistry](#)
- [Immunofluorescence](#)
- [Immunoprecipitation](#)
- [Flow Cytometry](#)
- [Cell Culture](#)

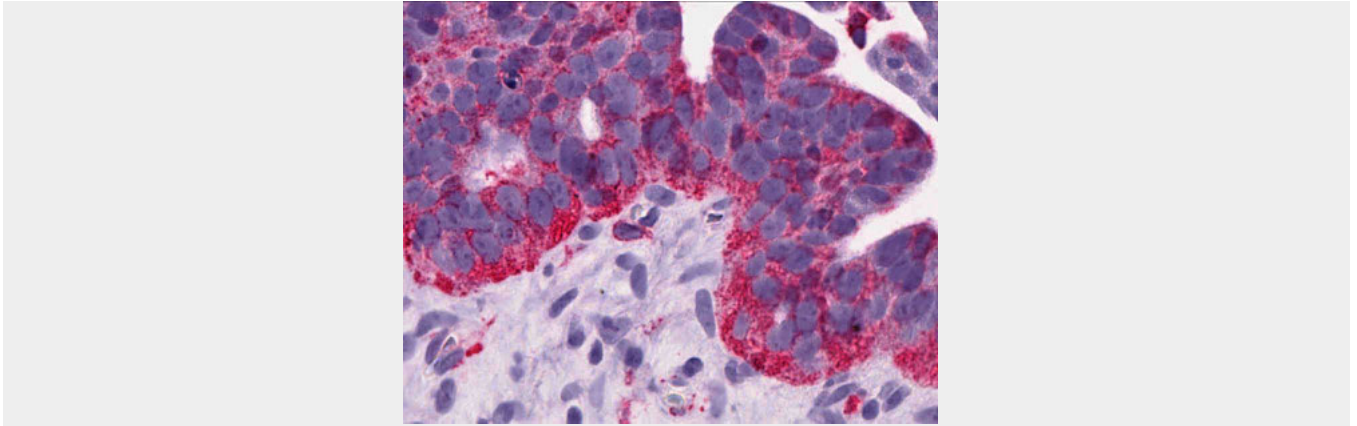
### **MCHR1 Antibody (N-Terminus) - Images**



Anti-MCHR1 antibody IHC of human Soft Tissue, Liposarcoma.



Anti-MCHR1 antibody ALS10389 IHC of human brain.



Anti-MCHR1 antibody IHC of human Ovary, Carcinoma.

### **MCHR1 Antibody (N-Terminus) - Background**

Receptor for melanin-concentrating hormone, coupled to both G proteins that inhibit adenylyl cyclase and G proteins that activate phosphoinositide hydrolysis.

### **MCHR1 Antibody (N-Terminus) - References**

- Shimomura Y., et al. *Biochem. Biophys. Res. Commun.* 261:622-626(1999).
- Wermter A.-K., et al. *Eur. J. Endocrinol.* 152:851-862(2005).
- Collins J.E., et al. *Genome Biol.* 5:R84.1-R84.11(2004).
- Kalnine N., et al. Submitted (MAY-2003) to the EMBL/GenBank/DDBJ databases.
- King M.M., et al. Submitted (MAR-2004) to the EMBL/GenBank/DDBJ databases.