

TPRA1 / GPR175 Antibody (Cytoplasmic Domain)
Rabbit Polyclonal Antibody
Catalog # ALS10383**Specification**

TPRA1 / GPR175 Antibody (Cytoplasmic Domain) - Product Information

| | |
|-------------------|--|
| Application | IHC |
| Primary Accession | Q86W33 |
| Reactivity | Human, Rabbit, Monkey, Pig, Horse, Dog |
| Host | Rabbit |
| Clonality | Polyclonal |
| Calculated MW | 41kDa KDa |

TPRA1 / GPR175 Antibody (Cytoplasmic Domain) - Additional Information**Gene ID** 131601**Other Names**Transmembrane protein adipocyte-associated 1, Integral membrane protein GPR175,
Transmembrane protein 227, TPRA1, GPR175, TMEM227**Target/Specificity**

Human TPRA1 / GPR175. BLAST analysis of the peptide immunogen showed no homology with other human proteins.

Reconstitution & Storage

Long term: -70°C; Short term: +4°C

Precautions

TPRA1 / GPR175 Antibody (Cytoplasmic Domain) is for research use only and not for use in diagnostic or therapeutic procedures.

TPRA1 / GPR175 Antibody (Cytoplasmic Domain) - Protein Information**Name** TPRA1**Synonyms** GPR175, TMEM227**Cellular Location**

Membrane; Multi-pass membrane protein.

Tissue Location

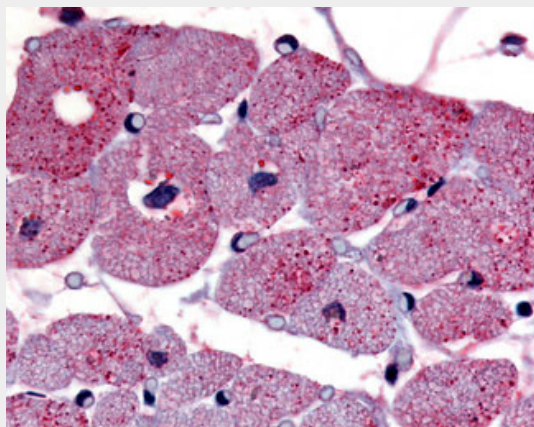
Ubiquitous, with higher levels in heart, placenta and kidney.

TPRA1 / GPR175 Antibody (Cytoplasmic Domain) - Protocols

Provided below are standard protocols that you may find useful for product applications.

- [Western Blot](#)
- [Blocking Peptides](#)
- [Dot Blot](#)
- [Immunohistochemistry](#)
- [Immunofluorescence](#)
- [Immunoprecipitation](#)
- [Flow Cytometry](#)
- [Cell Culture](#)

TPRA1 / GPR175 Antibody (Cytoplasmic Domain) - Images



Anti-TPRA1 / GPR175 antibody ALS10383 IHC of human cardiac myocytes.

TPRA1 / GPR175 Antibody (Cytoplasmic Domain) - References

- Saito T., et al. Submitted (JAN-2000) to the EMBL/GenBank/DDBJ databases.
Wan D., et al. Proc. Natl. Acad. Sci. U.S.A. 101:15724-15729(2004).
Muzny D.M., et al. Nature 440:1194-1198(2006).
Mural R.J., et al. Submitted (SEP-2005) to the EMBL/GenBank/DDBJ databases.
Yang H., et al. Endocrinology 140:2859-2867(1999).