

TPRA1 / GPR175 Antibody (Cytoplasmic Domain)
Rabbit Polyclonal Antibody
Catalog # ALS10381**Specification**

TPRA1 / GPR175 Antibody (Cytoplasmic Domain) - Product Information

Application	IHC
Primary Accession	Q86W33
Reactivity	Human, Monkey
Host	Rabbit
Clonality	Polyclonal
Calculated MW	41kDa KDa

TPRA1 / GPR175 Antibody (Cytoplasmic Domain) - Additional Information**Gene ID** 131601**Other Names**

Transmembrane protein adipocyte-associated 1, Integral membrane protein GPR175, Transmembrane protein 227, TPRA1, GPR175, TMEM227

Target/Specificity

Human TPRA1 / GPR175. BLAST analysis of the peptide immunogen showed no homology with other human proteins.

Reconstitution & Storage

Long term: -70°C; Short term: +4°C

Precautions

TPRA1 / GPR175 Antibody (Cytoplasmic Domain) is for research use only and not for use in diagnostic or therapeutic procedures.

TPRA1 / GPR175 Antibody (Cytoplasmic Domain) - Protein Information**Name** TPRA1**Synonyms** GPR175, TMEM227**Cellular Location**

Membrane; Multi-pass membrane protein.

Tissue Location

Ubiquitous, with higher levels in heart, placenta and kidney.

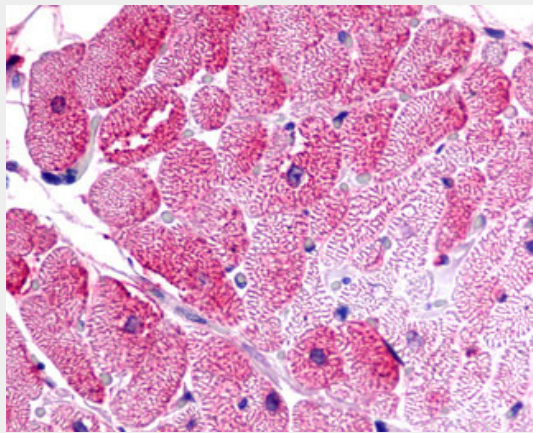
Volume

50 µl

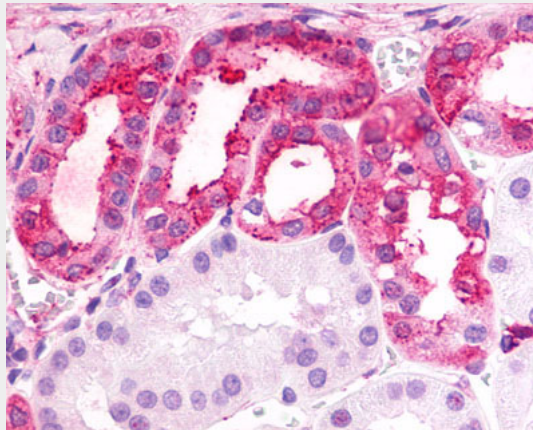
TPRA1 / GPR175 Antibody (Cytoplasmic Domain) - Protocols

Provided below are standard protocols that you may find useful for product applications.

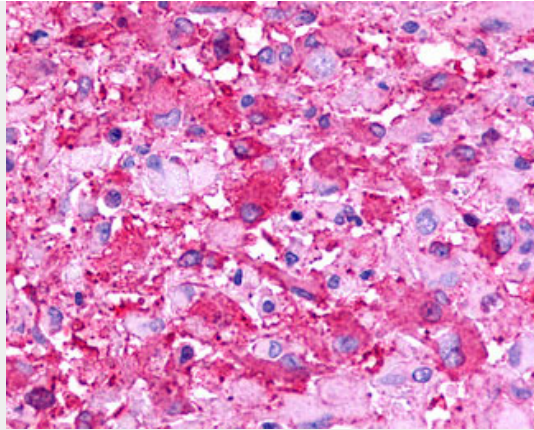
- [Western Blot](#)
- [Blocking Peptides](#)
- [Dot Blot](#)
- [Immunohistochemistry](#)
- [Immunofluorescence](#)
- [Immunoprecipitation](#)
- [Flow Cytometry](#)
- [Cell Culture](#)

TPRA1 / GPR175 Antibody (Cytoplasmic Domain) - Images

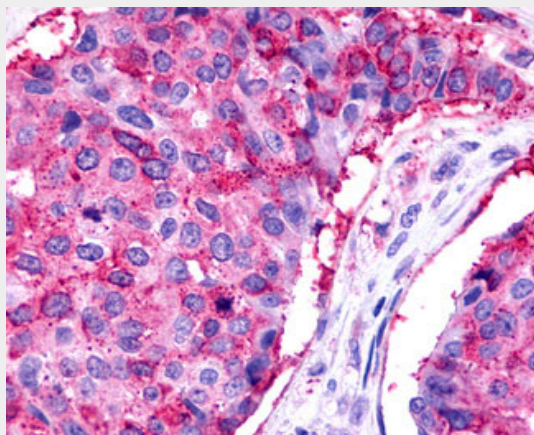
Anti-TPRA1 / GPR175 antibody IHC of human heart.



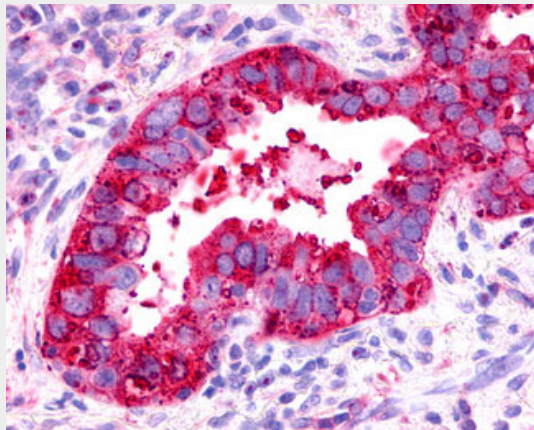
Anti-TPRA1 / GPR175 antibody ALS10381 IHC of human kidney.



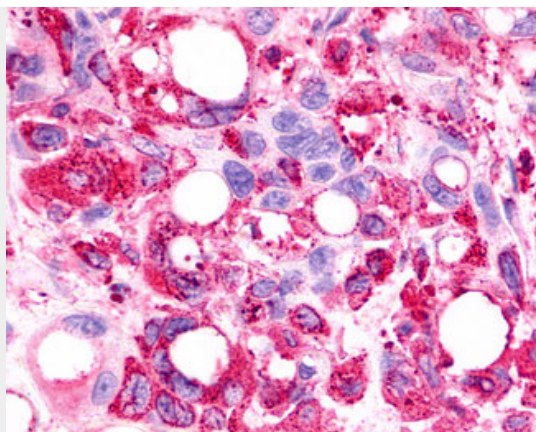
Anti-TPRA1 / GPR175 antibody IHC of human Brain, Glioblastoma.



Anti-TPRA1 / GPR175 antibody IHC of human Breast, Carcinoma.



Anti-TPRA1 / GPR175 antibody IHC of human Lung, Adenocarcinoma.



Anti-TPRA1 / GPR175 antibody IHC of human Pancreas, Carcinoma.

TPRA1 / GPR175 Antibody (Cytoplasmic Domain) - References

- Saito T.,et al.Submitted (JAN-2000) to the EMBL/GenBank/DDBJ databases.
Wan D.,et al.Proc. Natl. Acad. Sci. U.S.A. 101:15724-15729(2004).
Muzny D.M.,et al.Nature 440:1194-1198(2006).
Mural R.J.,et al.Submitted (SEP-2005) to the EMBL/GenBank/DDBJ databases.
Yang H.,et al.Endocrinology 140:2859-2867(1999).