

**TPRA1 / GPR175 Antibody (N-Terminus)**  
**Rabbit Polyclonal Antibody**  
**Catalog # ALS10380**

**Specification**

---

**TPRA1 / GPR175 Antibody (N-Terminus) - Product Information**

Application	IHC
Primary Accession	<a href="#">Q86W33</a>
Reactivity	Human, Rabbit, Monkey
Host	Rabbit
Clonality	Polyclonal
Calculated MW	41kDa KDa

**TPRA1 / GPR175 Antibody (N-Terminus) - Additional Information**

**Gene ID** 131601

**Other Names**

Transmembrane protein adipocyte-associated 1, Integral membrane protein GPR175, Transmembrane protein 227, TPRA1, GPR175, TMEM227

**Target/Specificity**

Human TPRA1 / GPR175. BLAST analysis of the peptide immunogen showed no homology with other human proteins.

**Reconstitution & Storage**

Long term: -70°C; Short term: +4°C

**Precautions**

TPRA1 / GPR175 Antibody (N-Terminus) is for research use only and not for use in diagnostic or therapeutic procedures.

**TPRA1 / GPR175 Antibody (N-Terminus) - Protein Information**

**Name** TPRA1

**Synonyms** GPR175, TMEM227

**Cellular Location**

Membrane; Multi-pass membrane protein.

**Tissue Location**

Ubiquitous, with higher levels in heart, placenta and kidney.

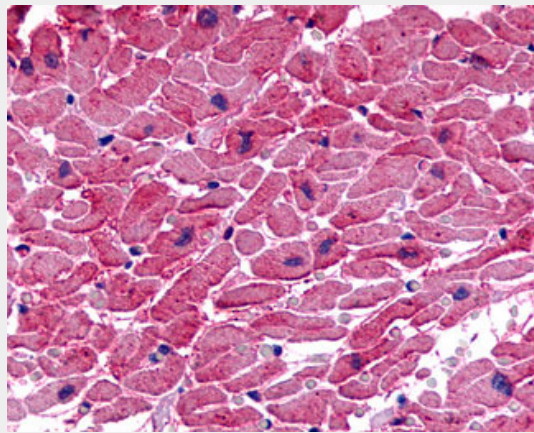
**Volume**

50 µl

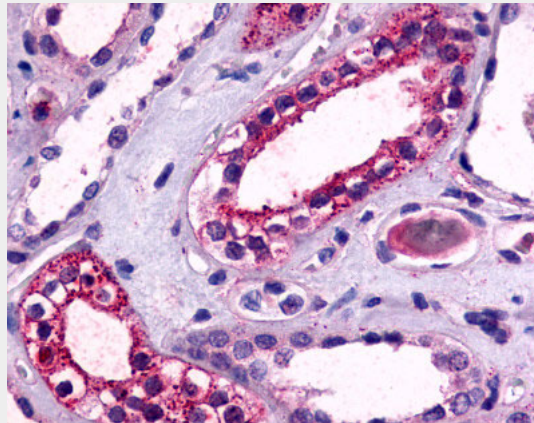
**TPRA1 / GPR175 Antibody (N-Terminus) - Protocols**

Provided below are standard protocols that you may find useful for product applications.

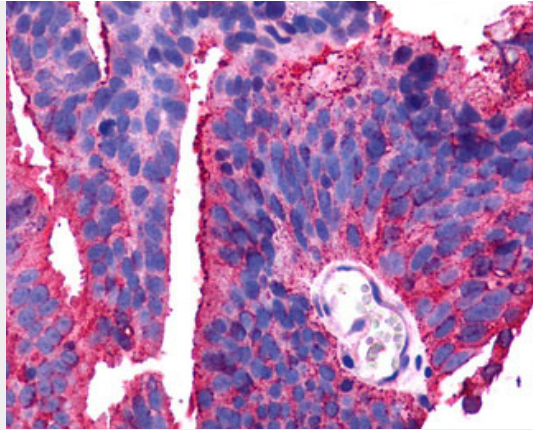
- [Western Blot](#)
- [Blocking Peptides](#)
- [Dot Blot](#)
- [Immunohistochemistry](#)
- [Immunofluorescence](#)
- [Immunoprecipitation](#)
- [Flow Cytometry](#)
- [Cell Culture](#)

**TPRA1 / GPR175 Antibody (N-Terminus) - Images**

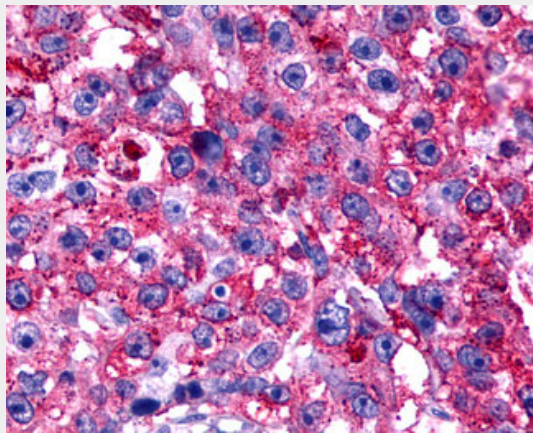
Anti-TPRA1 / GPR175 antibody IHC of human heart.



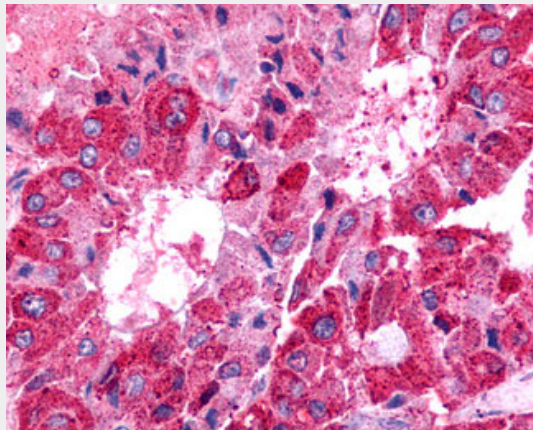
Anti-TPRA1 / GPR175 antibody ALS10380 IHC of human kidney.



Anti-TPRA1 / GPR175 antibody IHC of human Prostate, Carcinoma.



Anti-TPRA1 / GPR175 antibody IHC of human Breast, Carcinoma.



Anti-TPRA1 / GPR175 antibody IHC of human Lung, Adenocarcinoma.

#### **TPRA1 / GPR175 Antibody (N-Terminus) - References**

- Saito T.,et al.Submitted (JAN-2000) to the EMBL/GenBank/DDBJ databases.  
Wan D.,et al.Proc. Natl. Acad. Sci. U.S.A. 101:15724-15729(2004).  
Muzny D.M.,et al.Nature 440:1194-1198(2006).  
Mural R.J.,et al.Submitted (SEP-2005) to the EMBL/GenBank/DDBJ databases.  
Yang H.,et al.Endocrinology 140:2859-2867(1999).