

**Leukotriene B4 Receptor / BLT1 Antibody (Cytoplasmic Domain)
Rabbit Polyclonal Antibody
Catalog # ALS10374**

Specification

Leukotriene B4 Receptor / BLT1 Antibody (Cytoplasmic Domain) - Product Information

Application	IHC
Primary Accession	Q15722
Reactivity	Human, Mouse, Rabbit, Hamster, Monkey, Horse
Host	Rabbit
Clonality	Polyclonal
Calculated MW	38kDa KDa

Leukotriene B4 Receptor / BLT1 Antibody (Cytoplasmic Domain) - Additional Information

Gene ID 1241

Other Names

Leukotriene B4 receptor 1, LTB4-R 1, LTB4-R1, Chemoattractant receptor-like 1, G-protein coupled receptor 16, P2Y purinoceptor 7, P2Y7, LTB4R, BLT, BLT1, BLTR, CMKRL1, GPR16, P2RY7

Target/Specificity

Human Leukotriene B4 Receptor. BLAST analysis of the peptide immunogen showed no homology with other human proteins.

Reconstitution & Storage

Long term: -70°C; Short term: +4°C

Precautions

Leukotriene B4 Receptor / BLT1 Antibody (Cytoplasmic Domain) is for research use only and not for use in diagnostic or therapeutic procedures.

Leukotriene B4 Receptor / BLT1 Antibody (Cytoplasmic Domain) - Protein Information

Name LTB4R

Synonyms BLT, BLT1, BLTR, CMKRL1, GPR16, P2RY7

Function

Receptor for extracellular ATP > UTP and ADP. The activity of this receptor is mediated by G proteins which activate a phosphatidylinositol-calcium second messenger system. May be the cardiac P2Y receptor involved in the regulation of cardiac muscle contraction through modulation of L-type calcium currents. Is a receptor for leukotriene B4, a potent chemoattractant involved in inflammation and immune response.

Cellular Location

Cell membrane; Multi-pass membrane protein.

Tissue Location

Expressed at highest levels in heart, skeletal muscle and at lower levels in brain and liver. High level of expression in lymphoid tissues

Volume

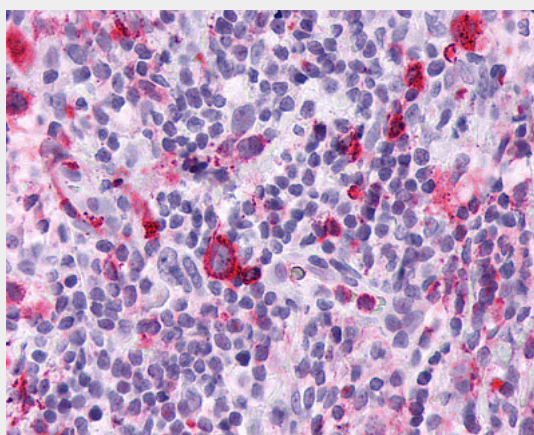
50 μ l

Leukotriene B4 Receptor / BLT1 Antibody (Cytoplasmic Domain) - Protocols

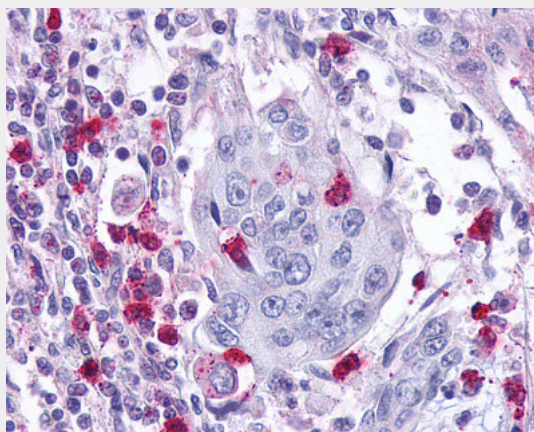
Provided below are standard protocols that you may find useful for product applications.

- [Western Blot](#)
- [Blocking Peptides](#)
- [Dot Blot](#)
- [Immunohistochemistry](#)
- [Immunofluorescence](#)
- [Immunoprecipitation](#)
- [Flow Cytometry](#)
- [Cell Culture](#)

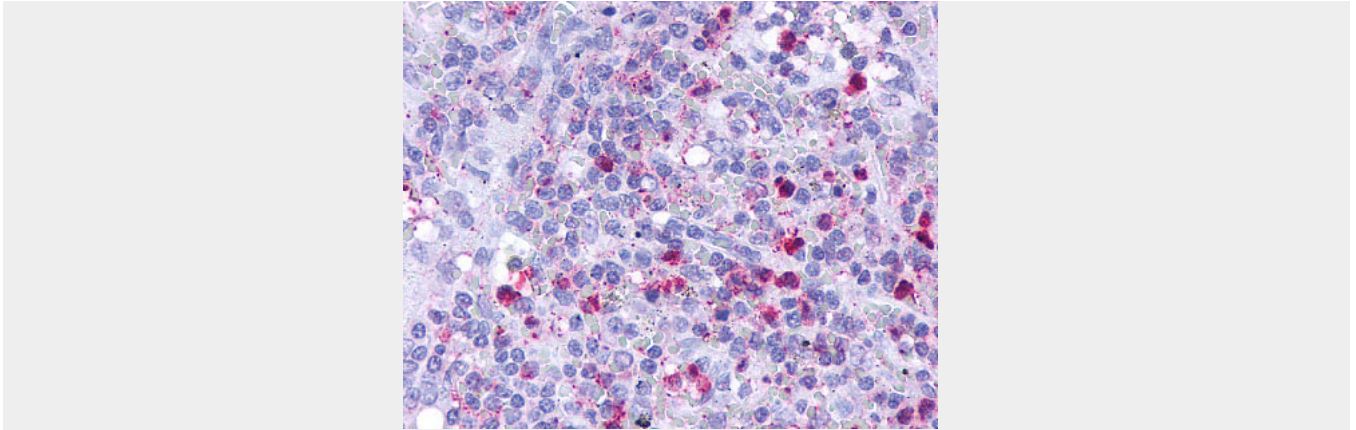
Leukotriene B4 Receptor / BLT1 Antibody (Cytoplasmic Domain) - Images



Anti-Leukotriene B4 Receptor / BLT1 antibody IHC of human Lymph Node, Hodgkins Lymphoma.



Anti-Leukotriene B4 Receptor / BLT1 antibody IHC of human Pancreas, Carcinoma and Leukocytes.



Anti-Leukotriene B4 Receptor antibody ALS10374 IHC of human spleen, red pulp.

Leukotriene B4 Receptor / BLT1 Antibody (Cytoplasmic Domain) - Background

Receptor for extracellular ATP > UTP and ADP. The activity of this receptor is mediated by G proteins which activate a phosphatidylinositol-calcium second messenger system. May be the cardiac P2Y receptor involved in the regulation of cardiac muscle contraction through modulation of L-type calcium currents. Is a receptor for leukotriene B4, a potent chemoattractant involved in inflammation and immune response.

Leukotriene B4 Receptor / BLT1 Antibody (Cytoplasmic Domain) - References

- Akbar G.K.M., et al. J. Biol. Chem. 271:18363-18367(1996).
- Raport C.J., et al. J. Leukoc. Biol. 59:18-23(1996).
- Yokomizo T., et al. Nature 387:620-624(1997).
- Owman C.S.O., et al. Genomics 37:187-194(1996).
- Kato K., et al. J. Exp. Med. 192:413-420(2000).