

**LHCGR / LHR / LH Receptor Antibody (C-Terminus)**  
**Rabbit Polyclonal Antibody**  
**Catalog # ALS10362****Specification**

---

**LHCGR / LHR / LH Receptor Antibody (C-Terminus) - Product Information**

Application	IHC
Primary Accession	<a href="#">P22888</a>
Reactivity	Human
Host	Rabbit
Clonality	Polyclonal
Calculated MW	79kDa KDa

**LHCGR / LHR / LH Receptor Antibody (C-Terminus) - Additional Information****Gene ID** 3973**Other Names**

Lutropin-choriogonadotropic hormone receptor, LH/CG-R, Luteinizing hormone receptor, LHR, LSH-R, LHCGR, LCGR, LGR2, LHRHR

**Target/Specificity**

Human hCG receptor. BLAST analysis of the peptide immunogen showed no homology with other human proteins.

**Reconstitution & Storage**

Long term: -70°C; Short term: +4°C

**Precautions**

LHCGR / LHR / LH Receptor Antibody (C-Terminus) is for research use only and not for use in diagnostic or therapeutic procedures.

**LHCGR / LHR / LH Receptor Antibody (C-Terminus) - Protein Information****Name** LHCGR**Synonyms** LCGR, LGR2, LHRHR**Function**Receptor for lutropin-choriogonadotropic hormone (PubMed:[11847099](http://www.uniprot.org/citations/11847099)). The activity of this receptor is mediated by G proteins which activate adenylate cyclase (PubMed:[11847099](http://www.uniprot.org/citations/11847099)).**Cellular Location**

Cell membrane; Multi-pass membrane protein

**Tissue Location**

Gonadal and thyroid cells.

**Volume**

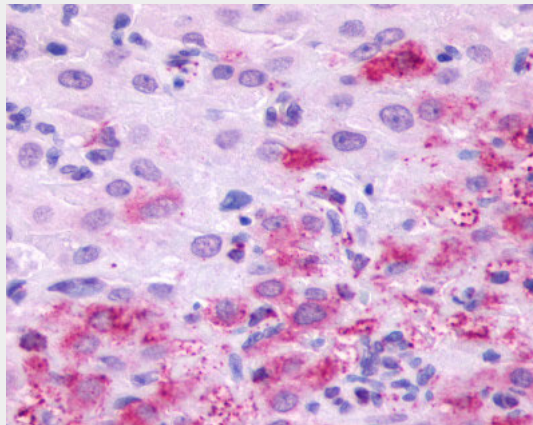
50  $\mu$ l

**LHCGR / LHR / LH Receptor Antibody (C-Terminus) - Protocols**

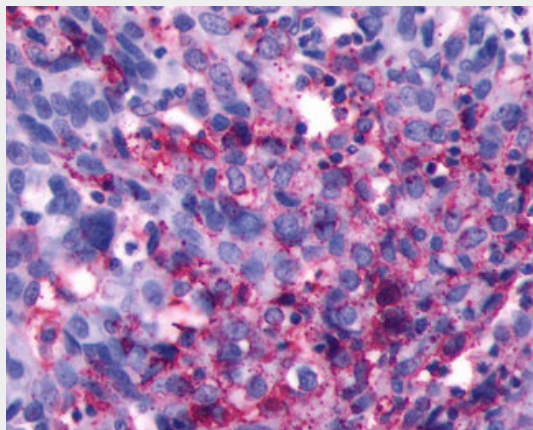
Provided below are standard protocols that you may find useful for product applications.

- [Western Blot](#)
- [Blocking Peptides](#)
- [Dot Blot](#)
- [Immunohistochemistry](#)
- [Immunofluorescence](#)
- [Immunoprecipitation](#)
- [Flow Cytometry](#)
- [Cell Culture](#)

**LHCGR / LHR / LH Receptor Antibody (C-Terminus) - Images**



Anti-hCG receptor antibody ALS10362 IHC of human ovary, corpus luteum.



Anti-LHCGR / LHR / LH Receptor antibody IHC of human Ovary, Carcinoma.

**LHCGR / LHR / LH Receptor Antibody (C-Terminus) - Background**

Receptor for lutropin-choriogonadotropic hormone. The activity of this receptor is mediated by G

proteins which activate adenylate cyclase.

**LHCGR / LHR / LH Receptor Antibody (C-Terminus) - References**

- Minegish T.,et al.Biochem. Biophys. Res. Commun. 172:1049-1054(1990).  
Jia X.-C.,et al.Mol. Endocrinol. 5:759-768(1991).  
Frazier A.L.,et al.Mol. Endocrinol. 4:1264-1276(1990).  
Atger M.,et al.Mol. Cell. Endocrinol. 111:113-123(1995).  
Hillier L.W.,et al.Nature 434:724-731(2005).