

**CXCR5 Antibody (C-Terminus)**  
**Rabbit Polyclonal Antibody**  
**Catalog # ALS10346****Specification**

---

**CXCR5 Antibody (C-Terminus) - Product Information**

Application	IHC
Primary Accession	<a href="#">P32302</a>
Reactivity	Human
Host	Rabbit
Clonality	Polyclonal
Calculated MW	42kDa KDa

**CXCR5 Antibody (C-Terminus) - Additional Information****Gene ID** 643**Other Names**

C-X-C chemokine receptor type 5, CXC-R5, CXCR-5, Burkitt lymphoma receptor 1, Monocyte-derived receptor 15, MDR-15, CD185, CXCR5, BLR1, MDR15

**Target/Specificity**

Human CXCR5. BLAST analysis of the peptide immunogen showed no homology with other human proteins, except NAAA (67%).

**Reconstitution & Storage**

Long term: -70°C; Short term: +4°C

**Precautions**

CXCR5 Antibody (C-Terminus) is for research use only and not for use in diagnostic or therapeutic procedures.

**CXCR5 Antibody (C-Terminus) - Protein Information****Name** CXCR5**Synonyms** BLR1, MDR15**Function**

Cytokine receptor that binds to B-lymphocyte chemoattractant (BLC). Involved in B-cell migration into B-cell follicles of spleen and Peyer patches but not into those of mesenteric or peripheral lymph nodes. May have a regulatory function in Burkitt lymphoma (BL) lymphomagenesis and/or B-cell differentiation.

**Cellular Location**

Cell membrane; Multi-pass membrane protein.

**Tissue Location**

Expression in mature B-cells and Burkitt lymphoma cells

**Volume**

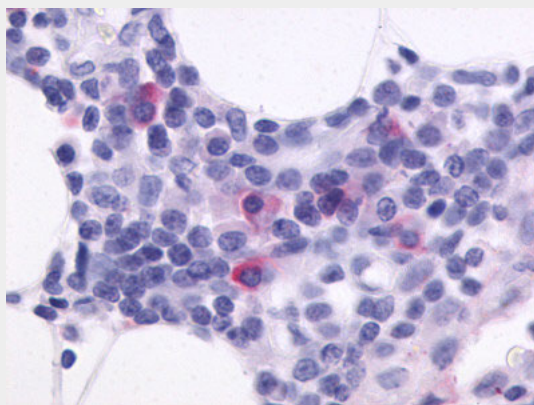
50  $\mu$ l

**CXCR5 Antibody (C-Terminus) - Protocols**

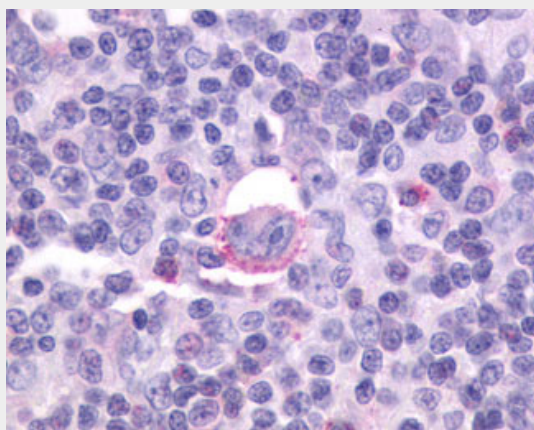
Provided below are standard protocols that you may find useful for product applications.

- [Western Blot](#)
- [Blocking Peptides](#)
- [Dot Blot](#)
- [Immunohistochemistry](#)
- [Immunofluorescence](#)
- [Immunoprecipitation](#)
- [Flow Cytometry](#)
- [Cell Culture](#)

**CXCR5 Antibody (C-Terminus) - Images**



Anti-CXCR5 antibody ALS10346 IHC of human spleen.



Anti-CXCR5 antibody IHC of human Lymph Node, Hodgkins Lymphoma.

**CXCR5 Antibody (C-Terminus) - Background**

Cytokine receptor that binds to B-lymphocyte chemoattractant (BLC). Involved in B-cell migration into B-cell follicles of spleen and Peyer patches but not into those of mesenteric or peripheral lymph

nodes. May have a regulatory function in Burkitt lymphoma (BL) lymphomagenesis and/or B-cell differentiation.

#### **CXCR5 Antibody (C-Terminus) - References**

- Dobner T., et al. Eur. J. Immunol. 22:2795-2799(1992).  
Barella L., et al. Biochem. J. 309:773-779(1995).  
Legler D.F., et al. J. Exp. Med. 187:655-660(1998).  
Sjoeblom T., et al. Science 314:268-274(2006).