

**CCKBR / Cckb Antibody (Cytoplasmic Domain)
Rabbit Polyclonal Antibody
Catalog # ALS10323****Specification**

CCKBR / Cckb Antibody (Cytoplasmic Domain) - Product Information

Application	IHC
Primary Accession	P32239
Reactivity	Human
Host	Rabbit
Clonality	Polyclonal
Calculated MW	48kDa KDa

CCKBR / Cckb Antibody (Cytoplasmic Domain) - Additional Information**Gene ID** 887**Other Names**

Gastrin/cholecystokinin type B receptor, CCK-B receptor, CCK-BR, Cholecystokinin-2 receptor, CCK2-R, CCKBR, CCKRB

Target/Specificity

Human CCKBR. BLAST analysis of the peptide immunogen showed no homology with other human proteins.

Reconstitution & Storage

Long term: -70°C; Short term: +4°C

Precautions

CCKBR / Cckb Antibody (Cytoplasmic Domain) is for research use only and not for use in diagnostic or therapeutic procedures.

CCKBR / Cckb Antibody (Cytoplasmic Domain) - Protein Information**Name** CCKBR ([HGNC:1571](#))**Synonyms** CCKRB**Function**

Receptor for gastrin and cholecystokinin. The CCK-B receptors occur throughout the central nervous system where they modulate anxiety, analgesia, arousal, and neuroleptic activity. This receptor mediates its action by association with G proteins that activate a phosphatidylinositol-calcium second messenger system.

Cellular Location

Cell membrane; Multi-pass membrane protein.

Tissue Location

Isoform 1 is expressed in brain, pancreas, stomach, the colon cancer cell line LoVo and the T-lymphoblastoma Jurkat, but not in heart, placenta, liver, lung, skeletal muscle, kidney or the stomach cancer cell line AGS. Expressed at high levels in the small cell lung cancer cell line NCI-H510, at lower levels in NCI-H345, NCI- H69 and GLC-28 cell lines, not expressed in GLC-19 cell line. Within the stomach, expressed at high levels in the mucosa of the gastric fundus and at low levels in the antrum and duodenum. Isoform 2 is present in pancreatic cancer cells and colorectal cancer cells, but not in normal pancreas or colonic mucosa. Isoform 3 is expressed in brain, pancreas, stomach, the stomach cancer cell line AGS and the colon cancer cell line LoVo.

Volume

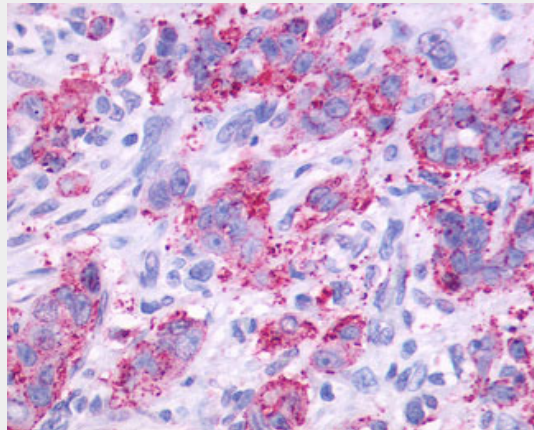
50 μ l

CCKBR / Cckb Antibody (Cytoplasmic Domain) - Protocols

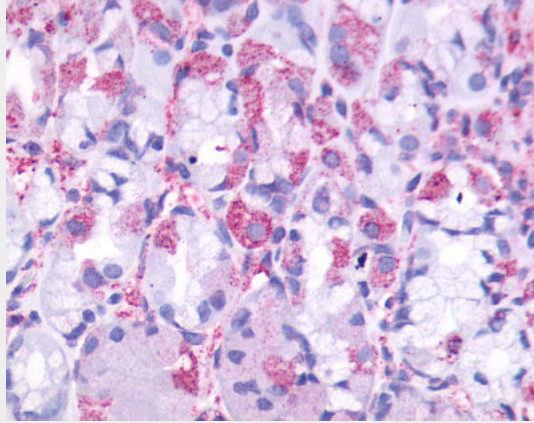
Provided below are standard protocols that you may find useful for product applications.

- [Western Blot](#)
- [Blocking Peptides](#)
- [Dot Blot](#)
- [Immunohistochemistry](#)
- [Immunofluorescence](#)
- [Immunoprecipitation](#)
- [Flow Cytometry](#)
- [Cell Culture](#)

CCKBR / Cckb Antibody (Cytoplasmic Domain) - Images



Anti-CCKBR / Cckb antibody IHC of human Stomach, Adenocarcinoma.



Anti-CCKBR antibody ALS10323 IHC of human stomach.

CCKBR / Cckb Antibody (Cytoplasmic Domain) - Background

Receptor for gastrin and cholecystokinin. The CCK-B receptors occur throughout the central nervous system where they modulate anxiety, analgesia, arousal, and neuroleptic activity. This receptor mediates its action by association with G proteins that activate a phosphatidylinositol-calcium second messenger system.

CCKBR / Cckb Antibody (Cytoplasmic Domain) - References

- Pisegna J.R., et al. *Biochem. Biophys. Res. Commun.* 189:296-303(1992).
- Lee Y.-M., et al. *J. Biol. Chem.* 268:8164-8169(1993).
- Ito M., et al. *J. Biol. Chem.* 268:18300-18305(1993).
- Song I., et al. *Proc. Natl. Acad. Sci. U.S.A.* 90:9085-9089(1993).
- Herget T., et al. *Ann. N. Y. Acad. Sci.* 713:283-297(1994).