

CCR1 Antibody (Extracellular Domain)
Rabbit Polyclonal Antibody
Catalog # ALS10312

Specification

CCR1 Antibody (Extracellular Domain) - Product Information

Application	IHC
Primary Accession	P32246
Reactivity	Human
Host	Rabbit
Clonality	Polyclonal
Calculated MW	41kDa KDa

CCR1 Antibody (Extracellular Domain) - Additional Information

Gene ID 1230

Other Names

C-C chemokine receptor type 1, C-C CKR-1, CC-CKR-1, CCR-1, CCR1, HM145, LD78 receptor, Macrophage inflammatory protein 1-alpha receptor, MIP-1alpha-R, RANTES-R, CD191, CCR1, CMKBR1, CMKR1, SCYAR1

Target/Specificity

Human CCR1. BLAST analysis of the peptide immunogen showed no homology with other human proteins.

Reconstitution & Storage

Long term: -70°C; Short term: +4°C

Precautions

CCR1 Antibody (Extracellular Domain) is for research use only and not for use in diagnostic or therapeutic procedures.

CCR1 Antibody (Extracellular Domain) - Protein Information

Name CCR1

Synonyms CMKBR1, CMKR1, SCYAR1

Function

Chemokine receptor that plays a crucial role in regulating immune cell migration, inflammation, and immune responses (PubMed: [14991608](http://www.uniprot.org/citations/14991608)). Contributes to the inflammatory response by recruiting immune cells, such as monocytes, macrophages, T-cells, and dendritic cells, to sites of inflammation for the clearance of pathogens and the resolution of tissue damage. When activated by its ligands including CCL3, CCL5-9, CCL13-16 and CCL23, triggers a signaling cascade within immune cells, leading to their migration towards the source of the chemokine (PubMed: [15905581](http://www.uniprot.org/citations/15905581)). For example,

mediates neutrophil migration after activation by CCL3 leading to the sequential release of TNF-alpha and leukotriene B4 (By similarity). Mediates also monocyte migration upon CXCL4 binding (PubMed:29930254). Activation by CCL5 results in neuroinflammation through the ERK1/2 signaling pathway (By similarity).

Cellular Location

Cell membrane; Multi-pass membrane protein

Tissue Location

Widely expressed in different hematopoietic cells.

Volume

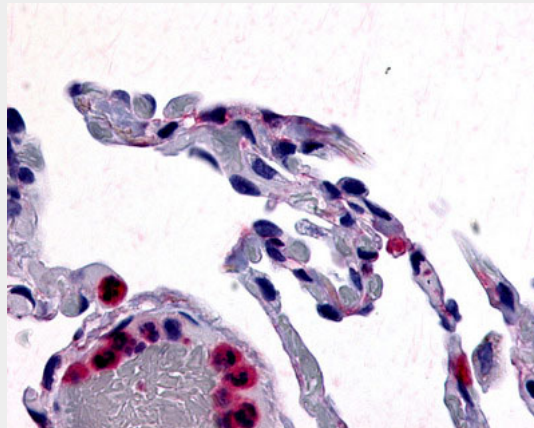
50 µl

CCR1 Antibody (Extracellular Domain) - Protocols

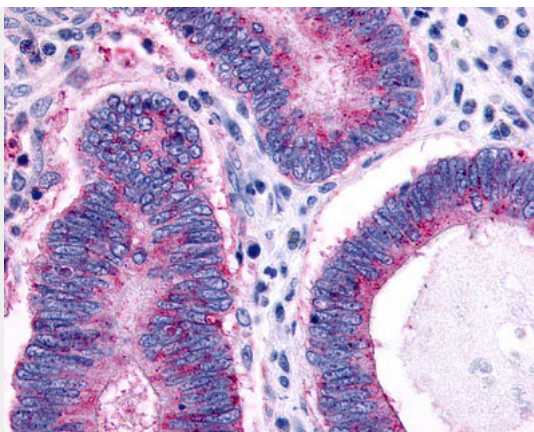
Provided below are standard protocols that you may find useful for product applications.

- [Western Blot](#)
- [Blocking Peptides](#)
- [Dot Blot](#)
- [Immunohistochemistry](#)
- [Immunofluorescence](#)
- [Immunoprecipitation](#)
- [Flow Cytometry](#)
- [Cell Culture](#)

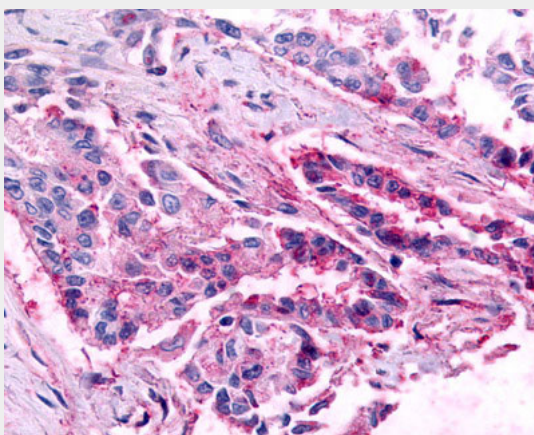
CCR1 Antibody (Extracellular Domain) - Images



Anti-CCR1 antibody IHC of human lung.



Anti-CCR1 antibody IHC of human Colon, Carcinoma.



Anti-CCR1 antibody IHC of human Lung, Adenocarcinoma.

CCR1 Antibody (Extracellular Domain) - Background

Receptor for a C-C type chemokine. Binds to MIP-1-alpha, MIP-1-delta, RANTES, and MCP-3 and, less efficiently, to MIP-1- beta or MCP-1 and subsequently transduces a signal by increasing the intracellular calcium ions level. Responsible for affecting stem cell proliferation.

CCR1 Antibody (Extracellular Domain) - References

- Neote K.,et al.Cell 72:415-425(1993).
- Gao J.-L.,et al.J. Exp. Med. 177:1421-1427(1993).
- Nomura H.,et al.Int. Immunol. 5:1239-1249(1993).
- Ko J.,et al.FASEB J. 18:890-892(2004).
- Sung H.J.,et al.Exp. Mol. Med. 40:332-338(2008).