

ADORA2A/Adenosine A2A Receptor Antibody (C-Terminus)
Rabbit Polyclonal Antibody
Catalog # ALS10311

Specification

ADORA2A/Adenosine A2A Receptor Antibody (C-Terminus) - Product Information

Application	IHC
Primary Accession	P29274
Reactivity	Human
Host	Rabbit
Clonality	Polyclonal
Calculated MW	45kDa KDa

ADORA2A/Adenosine A2A Receptor Antibody (C-Terminus) - Additional Information

Gene ID 135

Other Names

Adenosine receptor A2a, ADORA2A, ADORA2

Target/Specificity

Human ADORA2A. BLAST analysis of the peptide immunogen showed no homology with other human proteins.

Reconstitution & Storage

Long term: -70°C; Short term: +4°C

Precautions

ADORA2A/Adenosine A2A Receptor Antibody (C-Terminus) is for research use only and not for use in diagnostic or therapeutic procedures.

ADORA2A/Adenosine A2A Receptor Antibody (C-Terminus) - Protein Information

Name ADORA2A

Synonyms ADORA2

Function

Receptor for adenosine (By similarity). The activity of this receptor is mediated by G proteins which activate adenylyl cyclase (By similarity).

Cellular Location

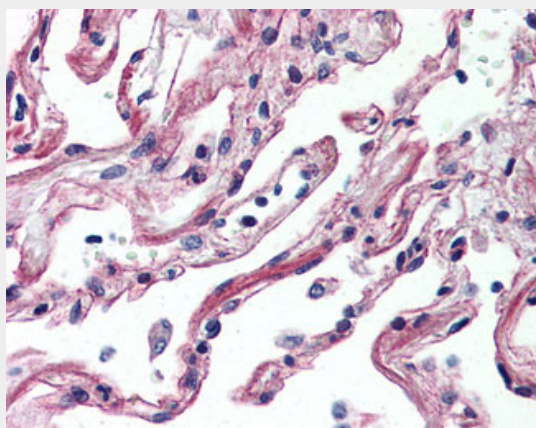
Cell membrane {ECO:0000250|UniProtKB:P30543}; Multi-pass membrane protein {ECO:0000250|UniProtKB:P30543} Note=Colocalizes with GAS2L2 at neuronal processes {ECO:0000250|UniProtKB:P30543}

ADORA2A/Adenosine A2A Receptor Antibody (C-Terminus) - Protocols

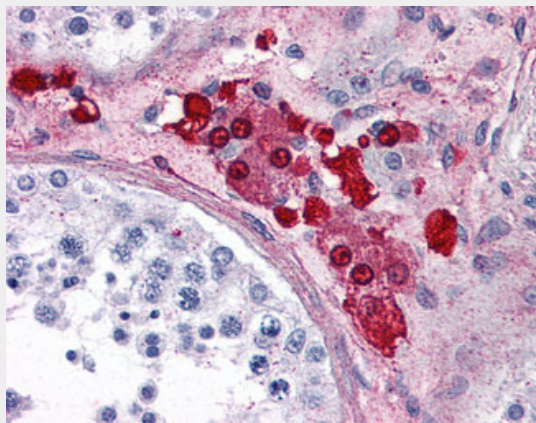
Provided below are standard protocols that you may find useful for product applications.

- [Western Blot](#)
- [Blocking Peptides](#)
- [Dot Blot](#)
- [Immunohistochemistry](#)
- [Immunofluorescence](#)
- [Immunoprecipitation](#)
- [Flow Cytometry](#)
- [Cell Culture](#)

ADORA2A/Adenosine A2A Receptor Antibody (C-Terminus) - Images



Anti-ADORA2A antibody ALS10311 IHC of human lung.



Anti-ADORA2A antibody ALS10311 IHC of human testis.

ADORA2A/Adenosine A2A Receptor Antibody (C-Terminus) - Background

Receptor for adenosine. The activity of this receptor is mediated by G proteins which activate adenylyl cyclase.

ADORA2A/Adenosine A2A Receptor Antibody (C-Terminus) - References

Tiffany H.L., et al. Submitted (JUL-1992) to the EMBL/GenBank/DDBJ databases.
Salvatore C.A., et al. Submitted (SEP-1992) to the EMBL/GenBank/DDBJ databases.
Furlong T.J., et al. Brain Res. Mol. Brain Res. 15:62-66(1992).

Le F., et al. *Biochem. Biophys. Res. Commun.* 223:461-467(1996).
Puhl H.L. III, et al. Submitted (JUL-2002) to the EMBL/GenBank/DDBJ databases.