

**TRH Receptor / TRHR Antibody (C-Terminus)**  
**Rabbit Polyclonal Antibody**  
**Catalog # ALS10295**

**Specification**

---

**TRH Receptor / TRHR Antibody (C-Terminus) - Product Information**

Application	IHC
Primary Accession	<a href="#">P34981</a>
Reactivity	Human, Pig, Sheep, Horse, Dog
Host	Rabbit
Clonality	Polyclonal
Calculated MW	45kDa KDa

**TRH Receptor / TRHR Antibody (C-Terminus) - Additional Information**

**Gene ID** 7201

**Other Names**

Thyrotropin-releasing hormone receptor, TRH-R, Thyroliberin receptor, TRHR

**Target/Specificity**

Human TRH Receptor. BLAST analysis of the peptide immunogen showed no homology with other human proteins.

**Reconstitution & Storage**

Long term: -70°C; Short term: +4°C

**Precautions**

TRH Receptor / TRHR Antibody (C-Terminus) is for research use only and not for use in diagnostic or therapeutic procedures.

**TRH Receptor / TRHR Antibody (C-Terminus) - Protein Information**

**Name** TRHR

**Function**

Receptor for thyrotropin-releasing hormone (TRH). Upon ligand binding, this G-protein-coupled receptor triggers activation of the phosphatidylinositol (IP3)-calcium-protein kinase C (PKC) pathway.

**Cellular Location**

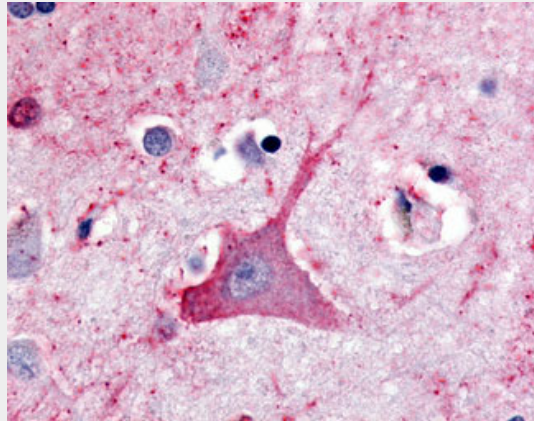
Cell membrane; Multi-pass membrane protein

**TRH Receptor / TRHR Antibody (C-Terminus) - Protocols**

Provided below are standard protocols that you may find useful for product applications.

- [Western Blot](#)
- [Blocking Peptides](#)
- [Dot Blot](#)
- [Immunohistochemistry](#)
- [Immunofluorescence](#)
- [Immunoprecipitation](#)
- [Flow Cytometry](#)
- [Cell Culture](#)

#### **TRH Receptor / TRHR Antibody (C-Terminus) - Images**



Anti-TRH Receptor antibody ALS10295 IHC of human brain, neuron.

#### **TRH Receptor / TRHR Antibody (C-Terminus) - Background**

Receptor for thyrotropin-releasing hormone. This receptor is mediated by G proteins which activate a phosphatidylinositol-calcium second messenger system.

#### **TRH Receptor / TRHR Antibody (C-Terminus) - References**

Matre V., et al. *Biochem. Biophys. Res. Commun.* 195:179-185(1993).  
Yamada M., et al. *Biochem. Biophys. Res. Commun.* 195:737-745(1993).  
Duthie S.M., et al. *Mol. Cell. Endocrinol.* 95:R11-R15(1993).  
Hinuma S., et al. *Biochim. Biophys. Acta* 1219:251-259(1994).  
Iwasaki T., et al. *J. Biol. Chem.* 271:22183-22188(1996).