

**HRH1 / Histamine H1 Receptor Antibody (Cytoplasmic Domain)  
Rabbit Polyclonal Antibody  
Catalog # ALS10285****Specification**

---

**HRH1 / Histamine H1 Receptor Antibody (Cytoplasmic Domain) - Product Information**

Application	IHC
Primary Accession	<a href="#">P35367</a>
Reactivity	Human
Host	Rabbit
Clonality	Polyclonal
Calculated MW	56kDa KDa

**HRH1 / Histamine H1 Receptor Antibody (Cytoplasmic Domain) - Additional Information****Gene ID** 3269**Other Names**

Histamine H1 receptor, H1R, HH1R, HRH1

**Target/Specificity**

Human HRH1 / Histamine H1 Receptor. BLAST analysis of the peptide immunogen showed no homology with other human proteins.

**Reconstitution & Storage**

Long term: -70°C; Short term: +4°C

**Precautions**

HRH1 / Histamine H1 Receptor Antibody (Cytoplasmic Domain) is for research use only and not for use in diagnostic or therapeutic procedures.

**HRH1 / Histamine H1 Receptor Antibody (Cytoplasmic Domain) - Protein Information****Name** HRH1 ([HGNC:5182](#))**Function**G-protein-coupled receptor for histamine, a biogenic amine that functions as an immune modulator and a neurotransmitter (PubMed: [33828102](http://www.uniprot.org/citations/33828102) target="\_blank">33828102</a>, PubMed: [8280179](http://www.uniprot.org/citations/8280179) target="\_blank">8280179</a>). Through the H1 receptor, histamine mediates the contraction of smooth muscles and increases capillary permeability due to contraction of terminal venules. Also mediates neurotransmission in the central nervous system and thereby regulates circadian rhythms, emotional and locomotor activities as well as cognitive functions (By similarity).**Cellular Location**

Cell membrane; Multi-pass membrane protein

**Volume**

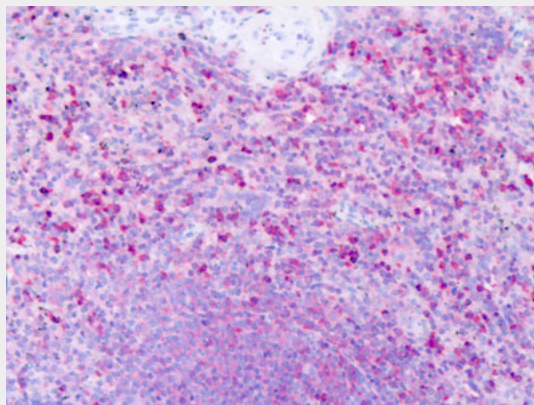
50 µl

### HRH1 / Histamine H1 Receptor Antibody (Cytoplasmic Domain) - Protocols

Provided below are standard protocols that you may find useful for product applications.

- [Western Blot](#)
- [Blocking Peptides](#)
- [Dot Blot](#)
- [Immunohistochemistry](#)
- [Immunofluorescence](#)
- [Immunoprecipitation](#)
- [Flow Cytometry](#)
- [Cell Culture](#)

### HRH1 / Histamine H1 Receptor Antibody (Cytoplasmic Domain) - Images



Anti-HRH1 / H1 Receptor antibody IHC of human spleen.

### HRH1 / Histamine H1 Receptor Antibody (Cytoplasmic Domain) - Background

In peripheral tissues, the H1 subclass of histamine receptors mediates the contraction of smooth muscles, increase in capillary permeability due to contraction of terminal venules, and catecholamine release from adrenal medulla, as well as mediating neurotransmission in the central nervous system.

### HRH1 / Histamine H1 Receptor Antibody (Cytoplasmic Domain) - References

- de Backer M.D., et al. *Biochem. Biophys. Res. Commun.* 197:1601-1608(1993).  
Fukui K., et al. *Biochem. Biophys. Res. Commun.* 201:894-901(1994).  
Moguilevsky N., et al. *Eur. J. Biochem.* 224:489-495(1994).  
Rae J.L., et al. Submitted (SEP-1997) to the EMBL/GenBank/DDBJ databases.  
Kitano T., et al. *Mol. Biol. Evol.* 21:936-944(2004).