

**CCR10 / GPR2 Antibody (C-Terminus)**  
**Rabbit Polyclonal Antibody**  
**Catalog # ALS10282**

**Specification**

---

**CCR10 / GPR2 Antibody (C-Terminus) - Product Information**

Application	IHC
Primary Accession	<a href="#">P46092</a>
Reactivity	Human
Host	Rabbit
Clonality	Polyclonal
Calculated MW	38kDa KDa

**CCR10 / GPR2 Antibody (C-Terminus) - Additional Information**

**Gene ID** 2826

**Other Names**

C-C chemokine receptor type 10, C-C CKR-10, CC-CKR-10, CCR-10, G-protein coupled receptor 2, CCR10, GPR2

**Target/Specificity**

Human CCR10. BLAST analysis of the peptide immunogen showed no homology with other human proteins.

**Reconstitution & Storage**

Long term: -70°C; Short term: +4°C

**Precautions**

CCR10 / GPR2 Antibody (C-Terminus) is for research use only and not for use in diagnostic or therapeutic procedures.

**CCR10 / GPR2 Antibody (C-Terminus) - Protein Information**

**Name** CCR10

**Synonyms** GPR2

**Function**

Receptor for chemokines SCYA27 and SCYA28. Subsequently transduces a signal by increasing the intracellular calcium ions level and stimulates chemotaxis in a pre-B cell line.

**Cellular Location**

Cell membrane; Multi-pass membrane protein.

**Tissue Location**

Expressed at high levels in adult testis, small intestine, fetal lung, fetal kidney. Weaker expression was observed in many other adult tissues including spleen, thymus, lymph node, Peyer patches,

colon, heart, ovary, peripheral blood lymphocytes, thyroid and spinal cord. Also expressed by melanocytes, dermal fibroblasts, dermal microvascular endothelial cells. Also detected in T-cells and in skin- derived Langerhans cells.

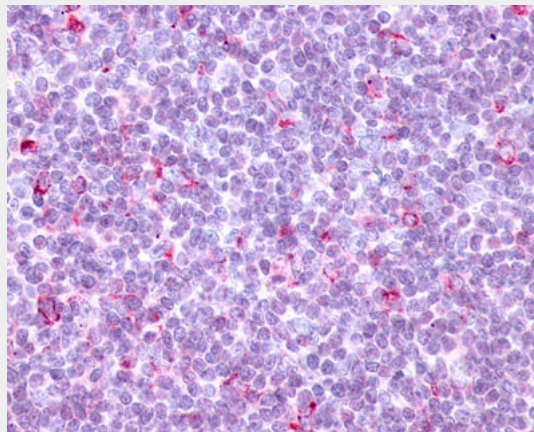
**Volume**  
50 µl

### **CCR10 / GPR2 Antibody (C-Terminus) - Protocols**

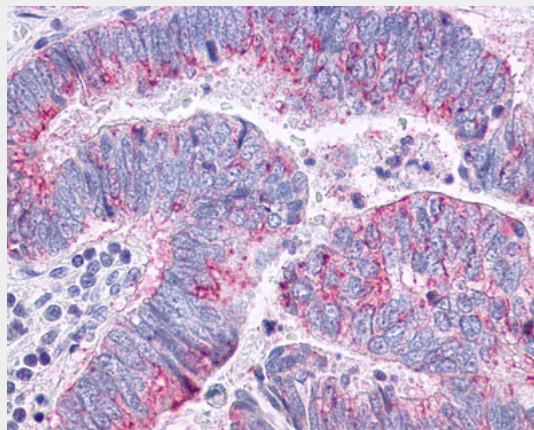
Provided below are standard protocols that you may find useful for product applications.

- [Western Blot](#)
- [Blocking Peptides](#)
- [Dot Blot](#)
- [Immunohistochemistry](#)
- [Immunofluorescence](#)
- [Immunoprecipitation](#)
- [Flow Cytometry](#)
- [Cell Culture](#)

### **CCR10 / GPR2 Antibody (C-Terminus) - Images**



Anti-CCR10 antibody ALS10282 IHC of human tonsil.



Anti-CCR10 / GPR2 antibody IHC of human Colon, Carcinoma.

### **CCR10 / GPR2 Antibody (C-Terminus) - Background**

Receptor for chemokines SCYA27 and SCYA28. Subsequently transduces a signal by increasing the intracellular calcium ions level and stimulates chemotaxis in a pre-B cell line.

#### **CCR10 / GPR2 Antibody (C-Terminus) - References**

- Jarmin D.I.,et al.J. Immunol. 164:3460-3464(2000).  
Homey B.,et al.J. Immunol. 164:3465-3470(2000).  
Kopatz S.A.,et al.Submitted (OCT-2003) to the EMBL/GenBank/DDBJ databases.  
Marchese A.,et al.Genomics 23:609-618(1994).  
Wang W.,et al.J. Biol. Chem. 275:22313-22323(2000).