

CCR10 / GPR2 Antibody (Extracellular Domain)
Rabbit Polyclonal Antibody
Catalog # ALS10281

Specification

CCR10 / GPR2 Antibody (Extracellular Domain) - Product Information

Application	IHC
Primary Accession	P46092
Reactivity	Human, Pig, Dog
Host	Rabbit
Clonality	Polyclonal
Calculated MW	38kDa KDa

CCR10 / GPR2 Antibody (Extracellular Domain) - Additional Information

Gene ID 2826

Other Names

C-C chemokine receptor type 10, C-C CKR-10, CC-CKR-10, CCR-10, G-protein coupled receptor 2, CCR10, GPR2

Target/Specificity

Human CCR10. BLAST analysis of the peptide immunogen showed no homology with other human proteins.

Reconstitution & Storage

Long term: -70°C; Short term: +4°C

Precautions

CCR10 / GPR2 Antibody (Extracellular Domain) is for research use only and not for use in diagnostic or therapeutic procedures.

CCR10 / GPR2 Antibody (Extracellular Domain) - Protein Information

Name CCR10

Synonyms GPR2

Function

Receptor for chemokines SCYA27 and SCYA28. Subsequently transduces a signal by increasing the intracellular calcium ions level and stimulates chemotaxis in a pre-B cell line.

Cellular Location

Cell membrane; Multi-pass membrane protein.

Tissue Location

Expressed at high levels in adult testis, small intestine, fetal lung, fetal kidney. Weaker expression was observed in many other adult tissues including spleen, thymus, lymph node, Peyer patches,

colon, heart, ovary, peripheral blood lymphocytes, thyroid and spinal cord. Also expressed by melanocytes, dermal fibroblasts, dermal microvascular endothelial cells. Also detected in T-cells and in skin- derived Langerhans cells.

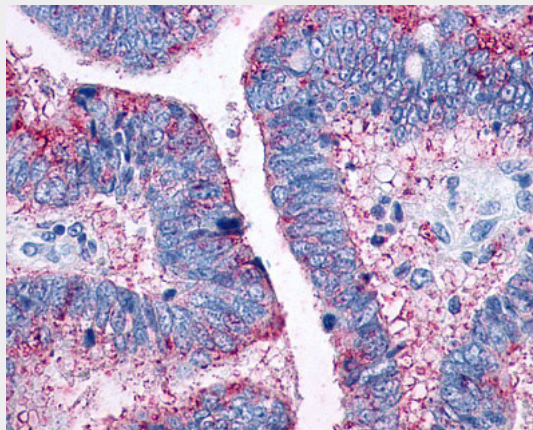
Volume
50 µl

CCR10 / GPR2 Antibody (Extracellular Domain) - Protocols

Provided below are standard protocols that you may find useful for product applications.

- [Western Blot](#)
- [Blocking Peptides](#)
- [Dot Blot](#)
- [Immunohistochemistry](#)
- [Immunofluorescence](#)
- [Immunoprecipitation](#)
- [Flow Cytometry](#)
- [Cell Culture](#)

CCR10 / GPR2 Antibody (Extracellular Domain) - Images



Anti-CCR10 / GPR2 antibody IHC of human Colon, Carcinoma.

CCR10 / GPR2 Antibody (Extracellular Domain) - Background

Receptor for chemokines SCYA27 and SCYA28. Subsequently transduces a signal by increasing the intracellular calcium ions level and stimulates chemotaxis in a pre-B cell line.

CCR10 / GPR2 Antibody (Extracellular Domain) - References

- Jarmin D.I.,et al.J. Immunol. 164:3460-3464(2000).
Homey B.,et al.J. Immunol. 164:3465-3470(2000).
Kopatz S.A.,et al.Submitted (OCT-2003) to the EMBL/GenBank/DDBJ databases.
Marchese A.,et al.Genomics 23:609-618(1994).
Wang W.,et al.J. Biol. Chem. 275:22313-22323(2000).