

ADGRL3 / LPHN3 Antibody (C-Terminus)
Rabbit Polyclonal Antibody
Catalog # ALS10279**Specification**

ADGRL3 / LPHN3 Antibody (C-Terminus) - Product Information

Application	IHC
Primary Accession	O9HAR2
Reactivity	Human, Mouse, Rabbit, Monkey, Chicken, Horse
Host	Rabbit
Clonality	Polyclonal
Calculated MW	162kDa KDa

ADGRL3 / LPHN3 Antibody (C-Terminus) - Additional Information**Gene ID** 23284**Other Names**

Latrophilin-3, Calcium-independent alpha-latrotoxin receptor 3, CIRL-3, Lectomedin-3, LPHN3, KIAA0768, LEC3

Target/Specificity

Human LPHN3. BLAST analysis of the peptide immunogen showed no homology with other human proteins.

Reconstitution & Storage

Long term: -70°C; Short term: +4°C

Precautions

ADGRL3 / LPHN3 Antibody (C-Terminus) is for research use only and not for use in diagnostic or therapeutic procedures.

ADGRL3 / LPHN3 Antibody (C-Terminus) - Protein Information**Name** ADGRL3 ([HGNC:20974](#))**Function**

Plays a role in cell-cell adhesion and neuron guidance via its interactions with FLRT2 and FLRT3 that are expressed at the surface of adjacent cells (PubMed:26235030). Plays a role in the development of glutamatergic synapses in the cortex. Important in determining the connectivity rates between the principal neurons in the cortex.

Cellular Location

Cell membrane; Multi-pass membrane protein. Cell projection, axon {ECO:0000250|UniProtKB:Q80TS3}. Cell junction {ECO:0000250|UniProtKB:Q80TS3}

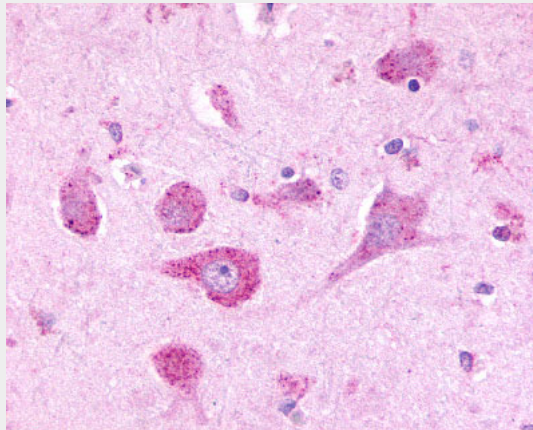
Volume
50 μ l

ADGRL3 / LPHN3 Antibody (C-Terminus) - Protocols

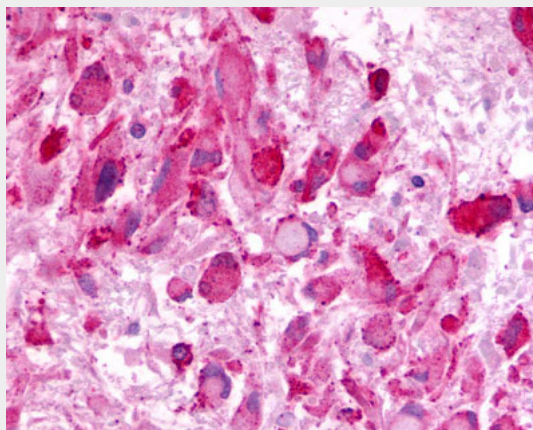
Provided below are standard protocols that you may find useful for product applications.

- [Western Blot](#)
- [Blocking Peptides](#)
- [Dot Blot](#)
- [Immunohistochemistry](#)
- [Immunofluorescence](#)
- [Immunoprecipitation](#)
- [Flow Cytometry](#)
- [Cell Culture](#)

ADGRL3 / LPHN3 Antibody (C-Terminus) - Images



Anti-LPHN3 antibody ALS10279 IHC of human brain, neurons.



Anti-LPHN3 / Latrophilin-3 antibody IHC of human Brain, Glioblastoma.

ADGRL3 / LPHN3 Antibody (C-Terminus) - Background

May be involved in the development of glutamatergic synapses in the cortex. Important in determining the connectivity rates between the principal neurons in the cortex (By similarity).

ADGRL3 / LPHN3 Antibody (C-Terminus) - References

Douangpanya J., et al. Submitted (SEP-2000) to the EMBL/GenBank/DDBJ databases.
Hillier L.W., et al. Nature 434:724-731(2005).
Ota T., et al. Nat. Genet. 36:40-45(2004).
Nagase T., et al. DNA Res. 5:277-286(1998).
Domene S., et al. Am. J. Med. Genet. B Neuropsychiatr. Genet. 156:11-18(2011).