

**CXCR6 Antibody (C-Terminus)**  
**Rabbit Polyclonal Antibody**  
**Catalog # ALS10267**

**Specification**

---

**CXCR6 Antibody (C-Terminus) - Product Information**

Application	IHC
Primary Accession	<a href="#">O00574</a>
Reactivity	Human
Host	Rabbit
Clonality	Polyclonal
Calculated MW	39kDa KDa

**CXCR6 Antibody (C-Terminus) - Additional Information**

**Gene ID** 10663

**Other Names**

C-X-C chemokine receptor type 6, CXC-R6, CXCR-6, CDw186, G-protein coupled receptor STRL33, G-protein coupled receptor bonzo, CD186, CXCR6, BONZO, STRL33, TYMSTR

**Target/Specificity**

Human CXCR6. BLAST analysis of the peptide immunogen showed no homology with other human proteins.

**Reconstitution & Storage**

Long term: -70°C; Short term: +4°C

**Precautions**

CXCR6 Antibody (C-Terminus) is for research use only and not for use in diagnostic or therapeutic procedures.

**CXCR6 Antibody (C-Terminus) - Protein Information**

**Name** CXCR6

**Synonyms** BONZO, STRL33, TYMSTR

**Function**

Receptor for the C-X-C chemokine CXCL16. Used as a coreceptor by SIVs and by strains of HIV-2 and m-tropic HIV-1.

**Cellular Location**

Cell membrane; Multi-pass membrane protein.

**Tissue Location**

Expressed in lymphoid tissues and activated T cells

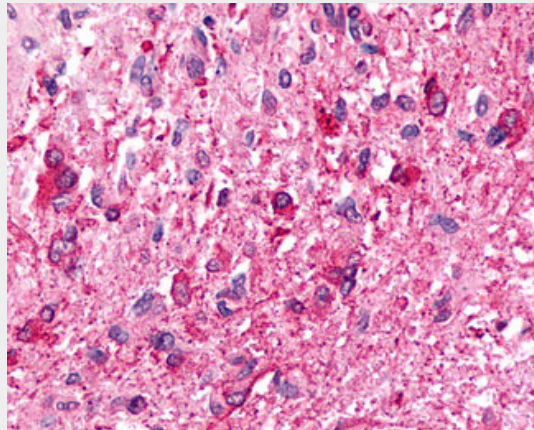
**Volume**  
50  $\mu$ l

### **CXCR6 Antibody (C-Terminus) - Protocols**

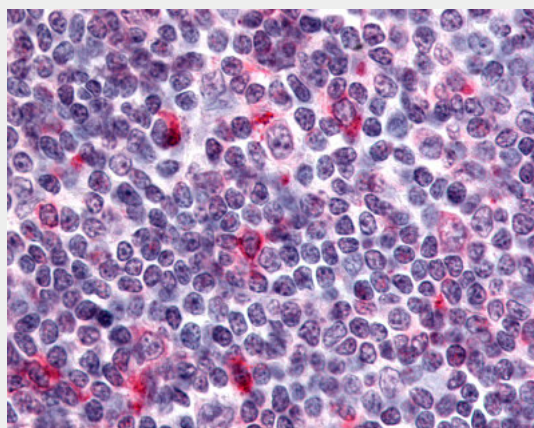
Provided below are standard protocols that you may find useful for product applications.

- [Western Blot](#)
- [Blocking Peptides](#)
- [Dot Blot](#)
- [Immunohistochemistry](#)
- [Immunofluorescence](#)
- [Immunoprecipitation](#)
- [Flow Cytometry](#)
- [Cell Culture](#)

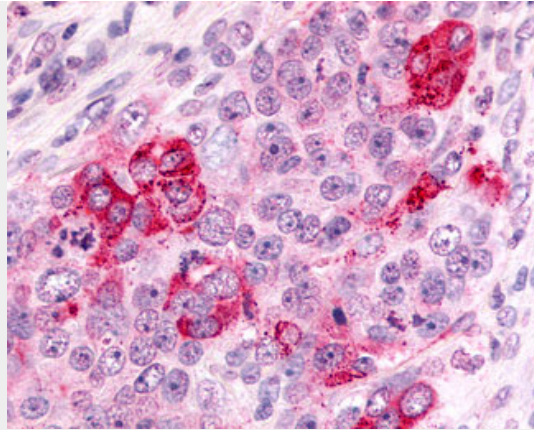
### **CXCR6 Antibody (C-Terminus) - Images**



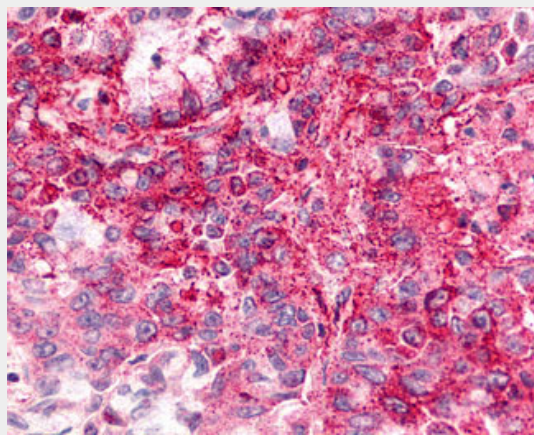
Anti-CXCR6 antibody IHC of human Brain, Glioblastoma.



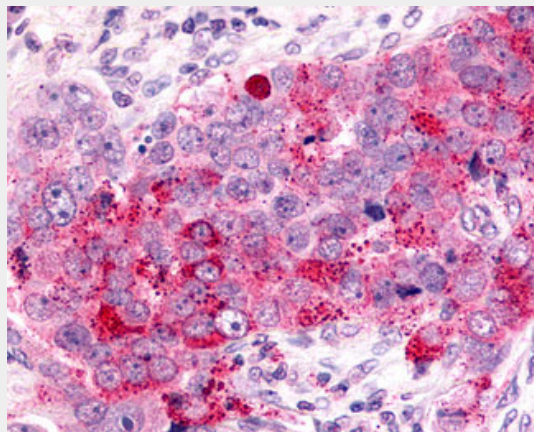
Anti-CXCR6 antibody ALS10267 IHC of human tonsil, immunoblasts.



Anti-CXCR6 antibody IHC of human Ovary, Carcinoma.



Anti-CXCR6 antibody IHC of human Lung, Adenocarcinoma.



Anti-CXCR6 antibody IHC of human Ovary, Carcinoma.

### **CXCR6 Antibody (C-Terminus) - Background**

Receptor for the C-X-C chemokine CXCL16. Used as a coreceptor by SIVs and by strains of HIV-2 and m-tropic HIV-1.

### **CXCR6 Antibody (C-Terminus) - References**

Deng H.K., et al. Nature 388:296-300(1997).  
Liao F., et al. J. Exp. Med. 185:2015-2023(1997).  
Loetscher M., et al. Curr. Biol. 7:652-660(1997).

An P.,et al.Submitted (OCT-1997) to the EMBL/GenBank/DDBJ databases.  
Kopatz S.A.,et al.Submitted (JUN-2003) to the EMBL/GenBank/DDBJ databases.