

NPY1R Antibody (Cytoplasmic Domain)
Rabbit Polyclonal Antibody
Catalog # ALS10256

Specification

NPY1R Antibody (Cytoplasmic Domain) - Product Information

Application	IHC
Primary Accession	P25929
Reactivity	Human, Mouse, Rabbit, Monkey, Pig, Horse, Guinea Pig, Dog
Host	Rabbit
Clonality	Polyclonal
Calculated MW	44kDa KDa

NPY1R Antibody (Cytoplasmic Domain) - Additional Information

Gene ID 4886

Other Names

Neuropeptide Y receptor type 1, NPY1-R, NPY1R, NPYR, NPYY1

Target/Specificity

Human NPY1R. BLAST analysis of the peptide immunogen showed no homology with other human proteins, except NPY6R (61%).

Reconstitution & Storage

Long term: -70°C; Short term: +4°C

Precautions

NPY1R Antibody (Cytoplasmic Domain) is for research use only and not for use in diagnostic or therapeutic procedures.

NPY1R Antibody (Cytoplasmic Domain) - Protein Information

Name NPY1R

Synonyms NPYR, NPYY1

Function

Receptor for neuropeptide Y and peptide YY. The rank order of affinity of this receptor for pancreatic polypeptides is NPY > [Pro-34] PYY, PYY and [Leu-31, Pro-34] NPY > NPY (2-36) > [Ile-31, Gln-34] PP and PYY (3-36) > PP > NPY free acid.

Cellular Location

Cell membrane; Multi-pass membrane protein.

Volume

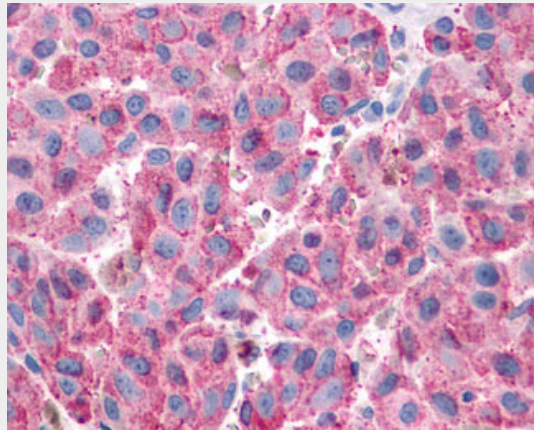
50 µl

NPY1R Antibody (Cytoplasmic Domain) - Protocols

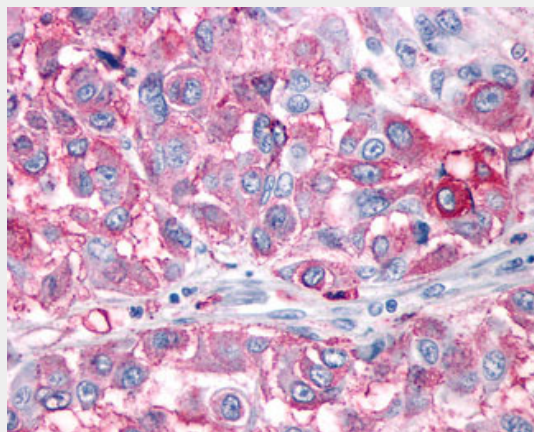
Provided below are standard protocols that you may find useful for product applications.

- [Western Blot](#)
- [Blocking Peptides](#)
- [Dot Blot](#)
- [Immunohistochemistry](#)
- [Immunofluorescence](#)
- [Immunoprecipitation](#)
- [Flow Cytometry](#)
- [Cell Culture](#)

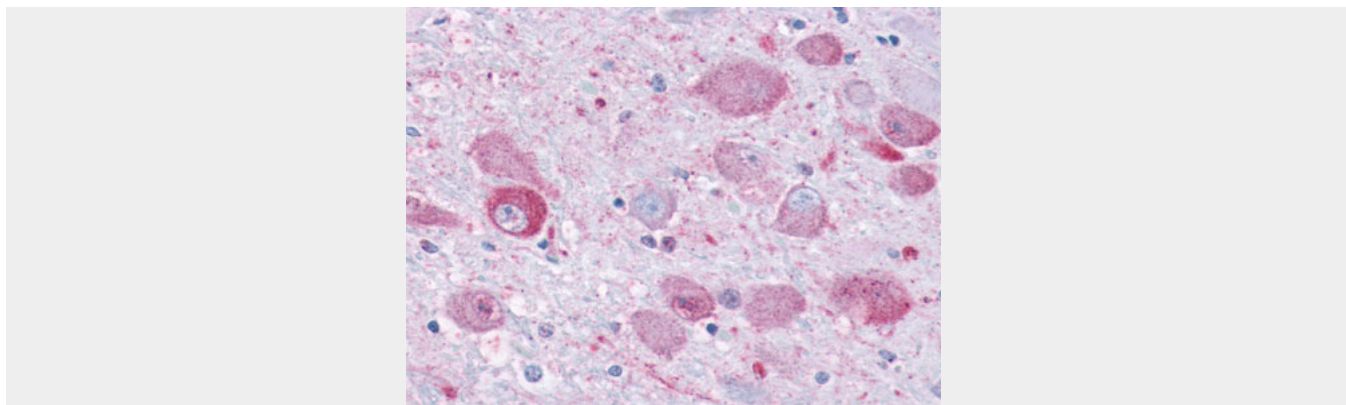
NPY1R Antibody (Cytoplasmic Domain) - Images



Anti-NPY1R antibody IHC of human Skin, Melanoma.



Anti-NPY1R antibody IHC of human Skin, Melanoma.



Anti-NPY1R antibody ALS10256 IHC of human brain.

NPY1R Antibody (Cytoplasmic Domain) - Background

Receptor for neuropeptide Y and peptide YY. The rank order of affinity of this receptor for pancreatic polypeptides is NPY > [Pro-34] PYY, PYY and [Leu-31, Pro-34] NPY > NPY (2-36) > [Ile-31, Gln-34] PP and PYY (3-36) > PP > NPY free acid.

NPY1R Antibody (Cytoplasmic Domain) - References

Larhammar D., et al. J. Biol. Chem. 267:10935-10938(1992).
Herzog H., et al. Proc. Natl. Acad. Sci. U.S.A. 89:5794-5798(1992).
Herzog H., et al. J. Biol. Chem. 268:6703-6707(1993).
Kopatz S.A., et al. Submitted (FEB-2004) to the EMBL/GenBank/DDBJ databases.
Ota T., et al. Nat. Genet. 36:40-45(2004).