

MC1R Antibody (Cytoplasmic Domain)
Rabbit Polyclonal Antibody
Catalog # ALS10249

Specification

MC1R Antibody (Cytoplasmic Domain) - Product Information

Application	IHC
Primary Accession	Q01726
Reactivity	Human, Monkey
Host	Rabbit
Clonality	Polyclonal
Calculated MW	35kDa KDa

MC1R Antibody (Cytoplasmic Domain) - Additional Information

Gene ID 4157

Other Names

Melanocyte-stimulating hormone receptor, MSH-R, Melanocortin receptor 1, MC1-R, MC1R, MSHR

Target/Specificity

Human MC1 Receptor. BLAST analysis of the peptide immunogen showed no homology with other human proteins.

Reconstitution & Storage

Long term: -70°C; Short term: +4°C

Precautions

MC1R Antibody (Cytoplasmic Domain) is for research use only and not for use in diagnostic or therapeutic procedures.

MC1R Antibody (Cytoplasmic Domain) - Protein Information

Name MC1R

Synonyms MSHR

Function

Receptor for MSH (alpha, beta and gamma) and ACTH (PubMed:[11442765](http://www.uniprot.org/citations/11442765), PubMed:[11707265](http://www.uniprot.org/citations/11707265), PubMed:[1325670](http://www.uniprot.org/citations/1325670), PubMed:[1516719](http://www.uniprot.org/citations/1516719), PubMed:[8463333](http://www.uniprot.org/citations/8463333)). The activity of this receptor is mediated by G proteins which activate adenylate cyclase (PubMed:[11707265](http://www.uniprot.org/citations/11707265), PubMed:[1325670](http://www.uniprot.org/citations/1325670), PubMed:[16463023](http://www.uniprot.org/citations/16463023), PubMed:[16463023](http://www.uniprot.org/citations/16463023)).

href="http://www.uniprot.org/citations/19737927" target="_blank">19737927). Mediates melanogenesis, the production of eumelanin (black/brown) and phaeomelanin (red/yellow), via regulation of cAMP signaling in melanocytes (PubMed:31097585).

Cellular Location

Cell membrane; Multi-pass membrane protein

Tissue Location

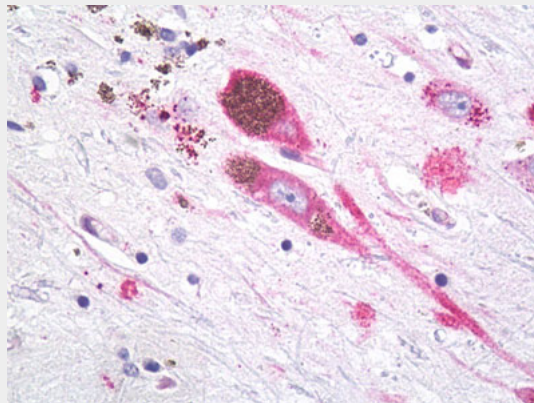
Expressed in melanocytes (PubMed:1325670, PubMed:31097585). Expressed in corticoadrenal tissue (PubMed:1325670)

MC1R Antibody (Cytoplasmic Domain) - Protocols

Provided below are standard protocols that you may find useful for product applications.

- [Western Blot](#)
- [Blocking Peptides](#)
- [Dot Blot](#)
- [Immunohistochemistry](#)
- [Immunofluorescence](#)
- [Immunoprecipitation](#)
- [Flow Cytometry](#)
- [Cell Culture](#)

MC1R Antibody (Cytoplasmic Domain) - Images



Anti-MC1R antibody IHC of brain, substantia nigra, neurons.

MC1R Antibody (Cytoplasmic Domain) - Background

Receptor for MSH (alpha, beta and gamma) and ACTH. The activity of this receptor is mediated by G proteins which activate adenylate cyclase.

MC1R Antibody (Cytoplasmic Domain) - References

- Mountjoy K.G., et al. *Science* 257:1248-1251(1992).
Gantz I., et al. *J. Biol. Chem.* 268:8246-8250(1993).
Chhajlani V., et al. *FEBS Lett.* 309:417-420(1992).
Chhajlani V., et al. *FEBS Lett.* 390:238-238(1996).
Rana B.K., et al. *Genetics* 151:1547-1557(1999).

