

PTGER1 / EP1 Antibody (Cytoplasmic Domain)
Rabbit Polyclonal Antibody
Catalog # ALS10222

Specification

PTGER1 / EP1 Antibody (Cytoplasmic Domain) - Product Information

Application	IHC
Primary Accession	P34995
Reactivity	Human
Host	Rabbit
Clonality	Polyclonal
Calculated MW	42kDa KDa

PTGER1 / EP1 Antibody (Cytoplasmic Domain) - Additional Information

Gene ID 5731

Other Names

Prostaglandin E2 receptor EP1 subtype, PGE receptor EP1 subtype, PGE2 receptor EP1 subtype, Prostanoid EP1 receptor, PTGER1

Target/Specificity

Human PTGER1 / EP1. BLAST analysis of the peptide immunogen showed no homology with other human proteins.

Reconstitution & Storage

Long term: -70°C; Short term: +4°C

Precautions

PTGER1 / EP1 Antibody (Cytoplasmic Domain) is for research use only and not for use in diagnostic or therapeutic procedures.

PTGER1 / EP1 Antibody (Cytoplasmic Domain) - Protein Information

Name PTGER1

Function

Receptor for prostaglandin E2 (PGE2). The activity of this receptor is mediated by G(q) proteins which activate a phosphatidylinositol-calcium second messenger system. May play a role as an important modulator of renal function. Implicated the smooth muscle contractile response to PGE2 in various tissues.

Cellular Location

Cell membrane; Multi-pass membrane protein.

Tissue Location

Abundant in kidney. Lower level expression in lung, skeletal muscle and spleen, lowest expression in testis and not detected in liver brain and heart

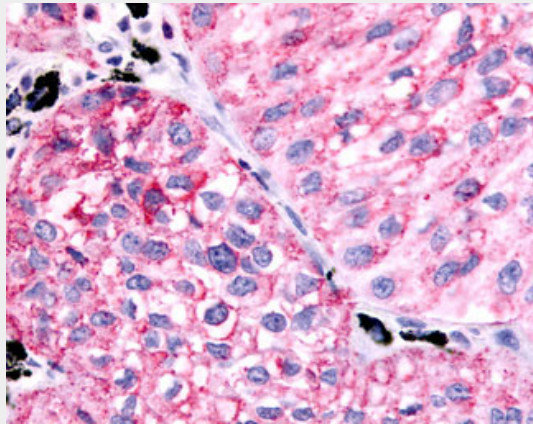
Volume
50 μ l

PTGER1 / EP1 Antibody (Cytoplasmic Domain) - Protocols

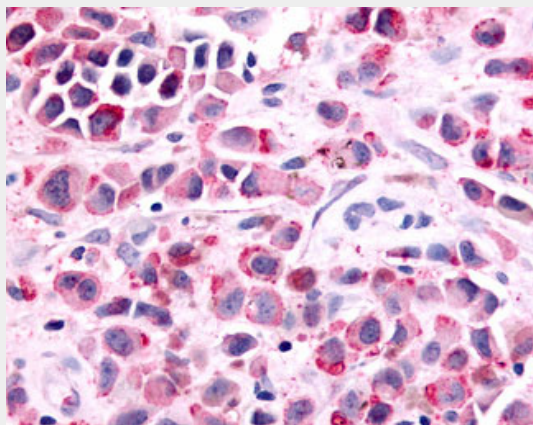
Provided below are standard protocols that you may find useful for product applications.

- [Western Blot](#)
- [Blocking Peptides](#)
- [Dot Blot](#)
- [Immunohistochemistry](#)
- [Immunofluorescence](#)
- [Immunoprecipitation](#)
- [Flow Cytometry](#)
- [Cell Culture](#)

PTGER1 / EP1 Antibody (Cytoplasmic Domain) - Images



Anti-PTGER1 / EP1 antibody IHC of human Lung, Non-Small Cell Carcinoma.



Anti-PTGER1 / EP1 antibody IHC of human Skin, Melanoma.

PTGER1 / EP1 Antibody (Cytoplasmic Domain) - Background

Receptor for prostaglandin E2 (PGE2). The activity of this receptor is mediated by G(q) proteins which activate a phosphatidylinositol-calcium second messenger system. May play a role as an important modulator of renal function. Implicated the smooth muscle contractile response to PGE2

in various tissues.

PTGER1 / EP1 Antibody (Cytoplasmic Domain) - References

Funk C.D., et al. J. Biol. Chem. 268:26767-26772(1993).

Suwa M., et al. Submitted (JUL-2001) to the EMBL/GenBank/DDBJ databases.

Warren C.N., et al. Submitted (APR-2003) to the EMBL/GenBank/DDBJ databases.