

**ADCYAP1R1 / PAC1 Receptor Antibody (N-Terminus)**  
Rabbit Polyclonal Antibody  
Catalog # ALS10216**Specification**

---

**ADCYAP1R1 / PAC1 Receptor Antibody (N-Terminus) - Product Information**

Application	IHC
Primary Accession	<a href="#">P41586</a>
Reactivity	Human, Monkey, Bovine
Host	Rabbit
Clonality	Polyclonal
Calculated MW	53kDa KDa

**ADCYAP1R1 / PAC1 Receptor Antibody (N-Terminus) - Additional Information****Gene ID** 117**Other Names**

Pituitary adenylate cyclase-activating polypeptide type I receptor, PACAP type I receptor, PACAP-R-1, PACAP-R1, ADCYAP1R1

**Target/Specificity**

Human ADCYAP1R1. BLAST analysis of the peptide immunogen showed no homology with other human proteins.

**Reconstitution & Storage**

Long term: -70°C; Short term: +4°C

**Precautions**

ADCYAP1R1 / PAC1 Receptor Antibody (N-Terminus) is for research use only and not for use in diagnostic or therapeutic procedures.

**ADCYAP1R1 / PAC1 Receptor Antibody (N-Terminus) - Protein Information****Name** ADCYAP1R1**Function**

This is a receptor for PACAP-27 and PACAP-38. The activity of this receptor is mediated by G proteins which activate adenylyl cyclase. May regulate the release of adrenocorticotropin, luteinizing hormone, growth hormone, prolactin, epinephrine, and catecholamine. May play a role in spermatogenesis and sperm motility. Causes smooth muscle relaxation and secretion in the gastrointestinal tract.

**Cellular Location**

Cell membrane; Multi-pass membrane protein.

**Tissue Location**

Most abundant in the brain, low expression in the lung, liver, thymus, spleen, pancreas and

placenta

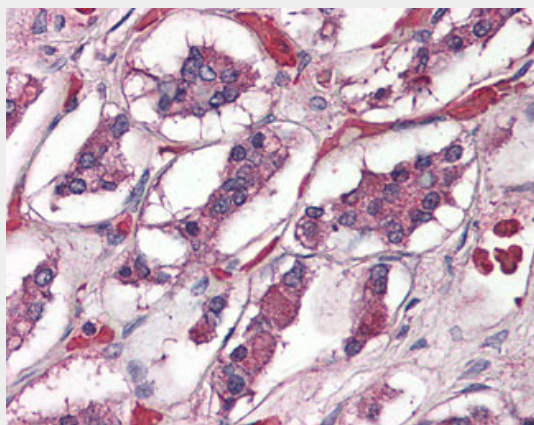
**Volume**  
50  $\mu$ l

### **ADCYAP1R1 / PAC1 Receptor Antibody (N-Terminus) - Protocols**

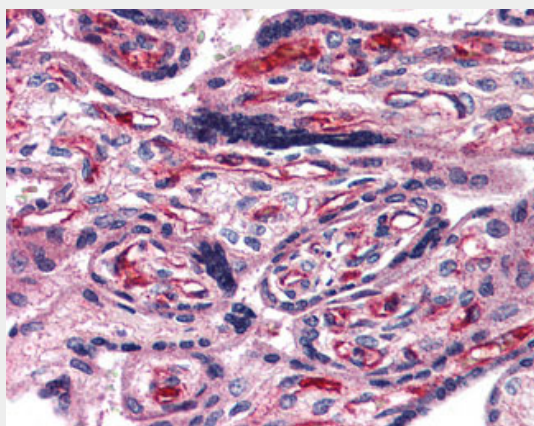
Provided below are standard protocols that you may find useful for product applications.

- [Western Blot](#)
- [Blocking Peptides](#)
- [Dot Blot](#)
- [Immunohistochemistry](#)
- [Immunofluorescence](#)
- [Immunoprecipitation](#)
- [Flow Cytometry](#)
- [Cell Culture](#)

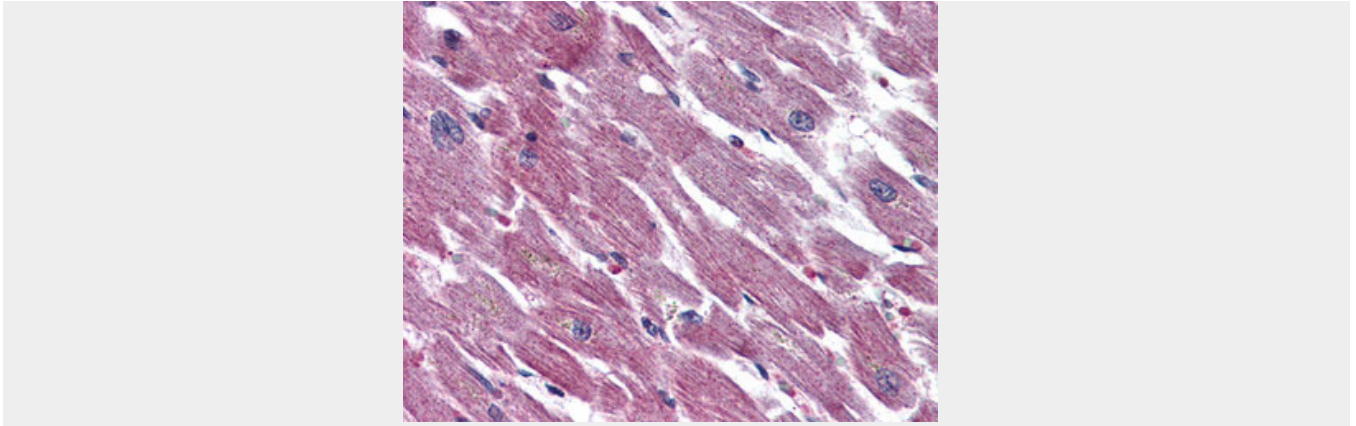
### **ADCYAP1R1 / PAC1 Receptor Antibody (N-Terminus) - Images**



Anti-ADCYAP1R1 / PAC1 Receptor antibody IHC of human brain, pituitary.



Anti-ADCYAP1R1 antibody ALS10216 IHC of human placenta.



Anti-ADCYAP1R1 antibody ALS10216 IHC of human heart.

### **ADCYAP1R1 / PAC1 Receptor Antibody (N-Terminus) - Background**

This is a receptor for PACAP-27 and PACAP-38. The activity of this receptor is mediated by G proteins which activate adenylyl cyclase. May regulate the release of adrenocorticotropin, luteinizing hormone, growth hormone, prolactin, epinephrine, and catecholamine. May play a role in spermatogenesis and sperm motility. Causes smooth muscle relaxation and secretion in the gastrointestinal tract.

### **ADCYAP1R1 / PAC1 Receptor Antibody (N-Terminus) - References**

Ogi K.,et al.Biochem. Biophys. Res. Commun. 196:1511-1521(1993).  
Suwa M.,et al.Submitted (JUL-2001) to the EMBL/GenBank/DDBJ databases.  
King M.,et al.Submitted (AUG-2003) to the EMBL/GenBank/DDBJ databases.  
Ota T.,et al.Nat. Genet. 36:40-45(2004).  
Hillier L.W.,et al.Nature 424:157-164(2003).