

**GRM2 / MGLUR2 Antibody (N-Terminus)**  
**Rabbit Polyclonal Antibody**  
**Catalog # ALS10200****Specification**

---

**GRM2 / MGLUR2 Antibody (N-Terminus) - Product Information**

Application	IHC
Primary Accession	<a href="#">Q14416</a>
Reactivity	Human, Mouse, Rabbit, Hamster, Pig, Bovine, Dog
Host	Rabbit
Clonality	Polyclonal
Calculated MW	96kDa KDa

**GRM2 / MGLUR2 Antibody (N-Terminus) - Additional Information****Gene ID** 2912**Other Names**

Metabotropic glutamate receptor 2, mGluR2, GRM2, GPRC1B, MGLUR2

**Target/Specificity**

Human GRM2 / MGLUR2. BLAST analysis of the peptide immunogen showed no homology with other human proteins, except GRM3 (42%).

**Reconstitution & Storage**

Long term: -70°C; Short term: +4°C

**Precautions**

GRM2 / MGLUR2 Antibody (N-Terminus) is for research use only and not for use in diagnostic or therapeutic procedures.

**GRM2 / MGLUR2 Antibody (N-Terminus) - Protein Information****Name** GRM2 ([HGNC:4594](#))**Synonyms** GPRC1B, MGLUR2**Function**

G-protein coupled receptor for glutamate. Ligand binding causes a conformation change that triggers signaling via guanine nucleotide-binding proteins (G proteins) and modulates the activity of down-stream effectors, such as adenylate cyclase. Signaling inhibits adenylate cyclase activity. May mediate suppression of neurotransmission or may be involved in synaptogenesis or synaptic stabilization.

**Cellular Location**

Cell membrane; Multi-pass membrane protein. Synapse. Cell projection, dendrite

**Tissue Location**

Detected in brain cortex (at protein level). Widely expressed in different regions of the adult brain as well as in fetal brain.

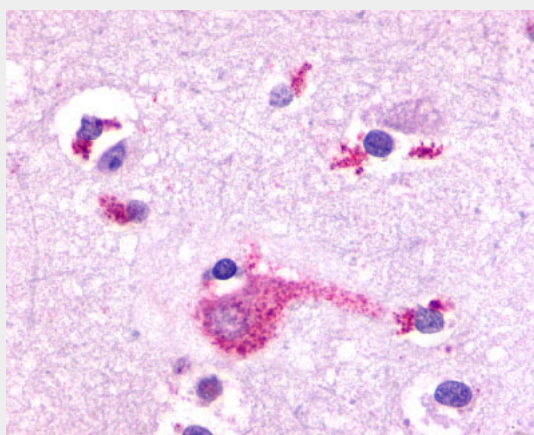
**Volume**

50  $\mu$ l

**GRM2 / MGLUR2 Antibody (N-Terminus) - Protocols**

Provided below are standard protocols that you may find useful for product applications.

- [Western Blot](#)
- [Blocking Peptides](#)
- [Dot Blot](#)
- [Immunohistochemistry](#)
- [Immunofluorescence](#)
- [Immunoprecipitation](#)
- [Flow Cytometry](#)
- [Cell Culture](#)

**GRM2 / MGLUR2 Antibody (N-Terminus) - Images**

Anti-GRM2 / MGLUR2 antibody ALS10200 IHC of human brain, neurons and glia.

**GRM2 / MGLUR2 Antibody (N-Terminus) - Background**

G-protein coupled receptor for glutamate. Ligand binding causes a conformation change that triggers signaling via guanine nucleotide-binding proteins (G proteins) and modulates the activity of down-stream effectors, such as adenylate cyclase. Signaling inhibits adenylate cyclase activity. May mediate suppression of neurotransmission or may be involved in synaptogenesis or synaptic stabilization.

**GRM2 / MGLUR2 Antibody (N-Terminus) - References**

Flor P.J., et al. Eur. J. Neurosci. 7:622-629(1995).  
Yasuyuki F., et al. Submitted (JUN-2000) to the EMBL/GenBank/DDBJ databases.  
Bonner T.I., et al. Submitted (APR-2005) to the EMBL/GenBank/DDBJ databases.  
Kaighin V.A., et al. Submitted (DEC-2007) to the EMBL/GenBank/DDBJ databases.  
Mural R.J., et al. Submitted (JUL-2005) to the EMBL/GenBank/DDBJ databases.