

GRM1 / MGLUR1 Antibody (C-Terminus)
Rabbit Polyclonal Antibody
Catalog # ALS10196**Specification**

GRM1 / MGLUR1 Antibody (C-Terminus) - Product Information

Application	IHC
Primary Accession	O13255
Reactivity	Human, Monkey
Host	Rabbit
Clonality	Polyclonal
Calculated MW	132kDa KDa

GRM1 / MGLUR1 Antibody (C-Terminus) - Additional Information**Gene ID** 2911**Other Names**

Metabotropic glutamate receptor 1, mGluR1, GRM1, GPRC1A, MGLUR1

Target/Specificity

Human GRM1 / MGLUR1, isoform alpha. BLAST analysis of the peptide immunogen showed no homology with other human proteins.

Reconstitution & Storage

Long term: -70°C; Short term: +4°C

Precautions

GRM1 / MGLUR1 Antibody (C-Terminus) is for research use only and not for use in diagnostic or therapeutic procedures.

GRM1 / MGLUR1 Antibody (C-Terminus) - Protein Information**Name** GRM1**Synonyms** GPRC1A, MGLUR1**Function**

G-protein coupled receptor for glutamate. Ligand binding causes a conformation change that triggers signaling via guanine nucleotide-binding proteins (G proteins) and modulates the activity of down-stream effectors. Signaling activates a phosphatidylinositol- calcium second messenger system. May participate in the central action of glutamate in the CNS, such as long-term potentiation in the hippocampus and long-term depression in the cerebellum (PubMed:24603153, PubMed:28886343, PubMed:7476890). May function in the light response in the retina (By similarity). Induces GRID1 and GRID2 cation-channel activation via GNAQ-PLC-PKC pathway in dopaminergic neurons and cerebellar Purkinje cell, respectively

(PubMed:24357660, PubMed:27276689).

Cellular Location

Cell membrane; Multi-pass membrane protein. Postsynaptic cell membrane; Multi-pass membrane protein

Tissue Location

Detected in brain..

Volume

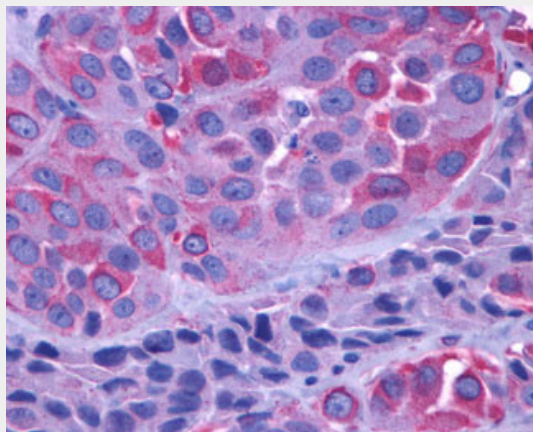
50 μ l

GRM1 / MGLUR1 Antibody (C-Terminus) - Protocols

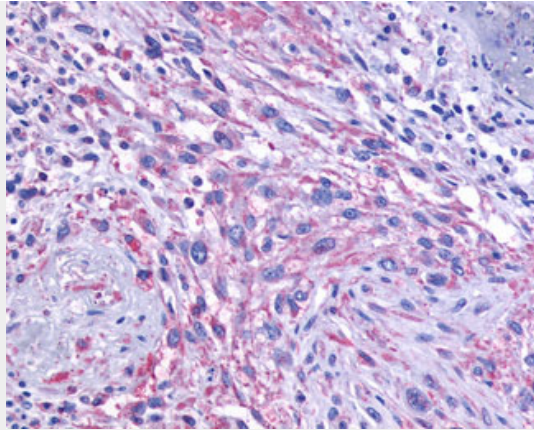
Provided below are standard protocols that you may find useful for product applications.

- [Western Blot](#)
- [Blocking Peptides](#)
- [Dot Blot](#)
- [Immunohistochemistry](#)
- [Immunofluorescence](#)
- [Immunoprecipitation](#)
- [Flow Cytometry](#)
- [Cell Culture](#)

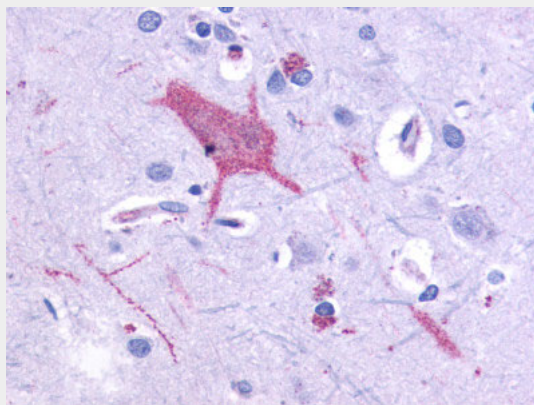
GRM1 / MGLUR1 Antibody (C-Terminus) - Images



Anti-GRM1 / MGLUR1 antibody IHC of human Skin, Melanoma.



Anti-GRM1 / MGLUR1 antibody IHC of human Brain, Glioblastoma.



Anti-GRM1 / MGLUR1 antibody ALS10196 IHC of human brain, neurons and glia.

GRM1 / MGLUR1 Antibody (C-Terminus) - Background

G-protein coupled receptor for glutamate. Ligand binding causes a conformation change that triggers signaling via guanine nucleotide-binding proteins (G proteins) and modulates the activity of down-stream effectors. Signaling activates a phosphatidylinositol-calcium second messenger system. May participate in the central action of glutamate in the CNS, such as long-term potentiation in the hippocampus and long-term depression in the cerebellum.

GRM1 / MGLUR1 Antibody (C-Terminus) - References

- Desai M.A.,et al.Mol. Pharmacol. 48:648-657(1995).
- Stephan D.,et al.Neuropharmacology 35:1649-1660(1996).
- Mungall A.J.,et al.Nature 425:805-811(2003).
- Guergueltcheva V.,et al.Am. J. Hum. Genet. 91:553-564(2012).
- Wu H.,et al.Science 344:58-64(2014).