

LPAR6 / P2RY5 / P2Y5 Antibody (Extracellular Domain)
Rabbit Polyclonal Antibody
Catalog # ALS10186

Specification

LPAR6 / P2RY5 / P2Y5 Antibody (Extracellular Domain) - Product Information

Application	IHC
Primary Accession	P43657
Reactivity	Human
Host	Rabbit
Clonality	Polyclonal
Calculated MW	39kDa KDa

LPAR6 / P2RY5 / P2Y5 Antibody (Extracellular Domain) - Additional Information

Gene ID 10161

Other Names

Lysophosphatidic acid receptor 6, LPA receptor 6, LPA-6, Oleoyl-L-alpha-lysophosphatidic acid receptor, P2Y purinoceptor 5, P2Y5, Purinergic receptor 5, RB intron encoded G-protein coupled receptor, LPAR6, P2RY5

Target/Specificity

Human LPAR6 / P2RY5. BLAST analysis of the peptide immunogen showed no homology with other human proteins.

Reconstitution & Storage

Long term: -70°C; Short term: +4°C

Precautions

LPAR6 / P2RY5 / P2Y5 Antibody (Extracellular Domain) is for research use only and not for use in diagnostic or therapeutic procedures.

LPAR6 / P2RY5 / P2Y5 Antibody (Extracellular Domain) - Protein Information

Name LPAR6

Synonyms P2RY5

Function

Binds to oleoyl-L-alpha-lysophosphatidic acid (LPA). Intracellular cAMP is involved in the receptor activation. Important for the maintenance of hair growth and texture.

Cellular Location

Cell membrane; Multi-pass membrane protein

Tissue Location

Expressed ubiquitously, including in skin and hair follicle cells. Detected in both Henle's and

Huxley's layers of the inner root sheath of the hair follicle and in suprabasal layers of the epidermis (at protein level). Expressed at low levels in peripheral blood leukocytes.

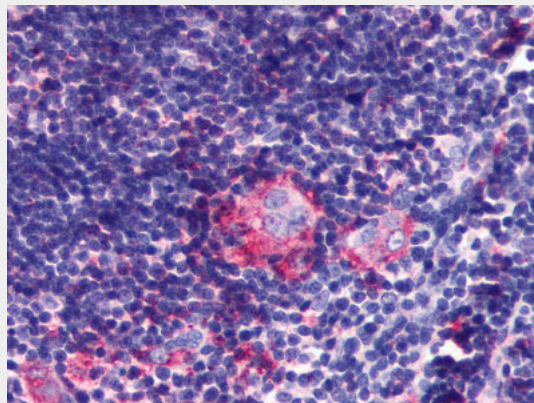
Volume
50 µl

LPAR6 / P2RY5 / P2Y5 Antibody (Extracellular Domain) - Protocols

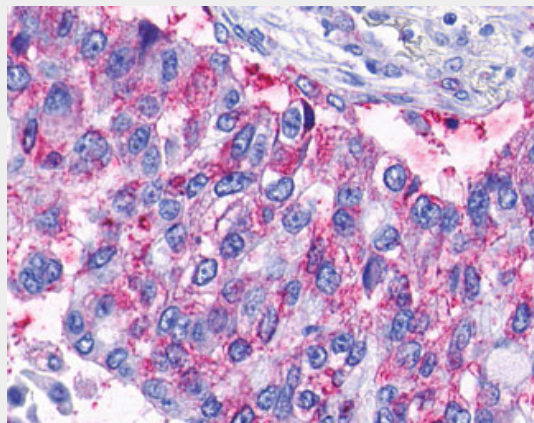
Provided below are standard protocols that you may find useful for product applications.

- [Western Blot](#)
- [Blocking Peptides](#)
- [Dot Blot](#)
- [Immunohistochemistry](#)
- [Immunofluorescence](#)
- [Immunoprecipitation](#)
- [Flow Cytometry](#)
- [Cell Culture](#)

LPAR6 / P2RY5 / P2Y5 Antibody (Extracellular Domain) - Images



Anti-LPAR6 / P2RY5 antibody ALS10186 IHC of human thymus.



Anti-LPAR6 / P2RY5 / P2Y5 antibody IHC of human Lung, Adenocarcinoma.

LPAR6 / P2RY5 / P2Y5 Antibody (Extracellular Domain) - Background

Binds to oleoyl-L-alpha-lysophosphatidic acid (LPA). Intracellular cAMP is involved in the receptor

activation. Important for the maintenance of hair growth and texture.

LPAR6 / P2RY5 / P2Y5 Antibody (Extracellular Domain) - References

Toguchida J., et al. Genomics 17:535-543(1993).

Herzog H., et al. Genome Res. 6:858-861(1996).

Bohm S.K., et al. Submitted (JUL-1997) to the EMBL/GenBank/DDBJ databases.

Bechtel S., et al. BMC Genomics 8:399-399(2007).

Ota T., et al. Nat. Genet. 36:40-45(2004).