

CALCR / Calcitonin Receptor Antibody (C-Terminus)
Rabbit Polyclonal Antibody
Catalog # ALS10163**Specification**

CALCR / Calcitonin Receptor Antibody (C-Terminus) - Product Information

Application	IHC
Primary Accession	P30988
Reactivity	Human
Host	Rabbit
Clonality	Polyclonal
Calculated MW	59kDa KDa

CALCR / Calcitonin Receptor Antibody (C-Terminus) - Additional Information**Gene ID** 799**Other Names**

Calcitonin receptor, CT-R, CALCR

Target/Specificity

Human Calcitonin Receptor. BLAST analysis of the peptide immunogen showed no homology with other human proteins.

Reconstitution & Storage

Long term: -70°C; Short term: +4°C

Precautions

CALCR / Calcitonin Receptor Antibody (C-Terminus) is for research use only and not for use in diagnostic or therapeutic procedures.

CALCR / Calcitonin Receptor Antibody (C-Terminus) - Protein Information**Name** CALCR ([HGNC:1440](#))**Function**

G protein-coupled receptor activated by ligand peptides amylin (IAPP), calcitonin (CT/CALCA) and calcitonin gene-related peptide type 1 (CGRP1/CALCA) (PubMed: [35324283](http://www.uniprot.org/citations/35324283), PubMed: [38603770](http://www.uniprot.org/citations/38603770)). CALCR interacts with receptor-activity-modifying proteins RAMP1, 2 and 3 to form receptor complexes AMYR1, 2 and 3, respectively (PubMed: [35324283](http://www.uniprot.org/citations/35324283), PubMed: [38603770](http://www.uniprot.org/citations/38603770)). IAPP, CT and CGRP1 activate CALCR and AMYRs with distinct modes of receptor activation resulting in specific phenotypes (PubMed: [35324283](http://www.uniprot.org/citations/35324283), PubMed: [38603770](http://www.uniprot.org/citations/38603770)). Ligand binding causes a conformation change that triggers signaling via guanine nucleotide-binding

proteins (G proteins) and modulates the activity of downstream effectors. Activates cAMP-dependent pathway (PubMed:35324283, PubMed:7476993).

Cellular Location

Cell membrane; Multi-pass membrane protein

Volume

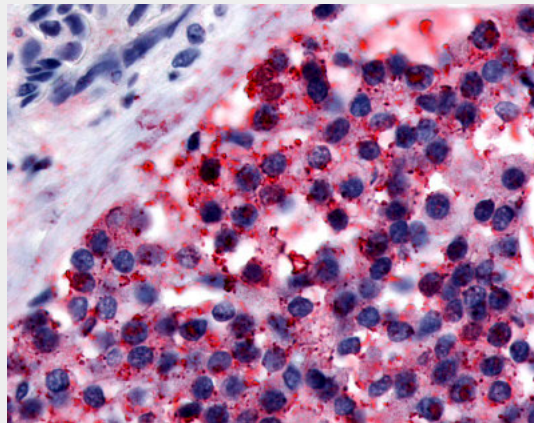
50 μ l

CALCR / Calcitonin Receptor Antibody (C-Terminus) - Protocols

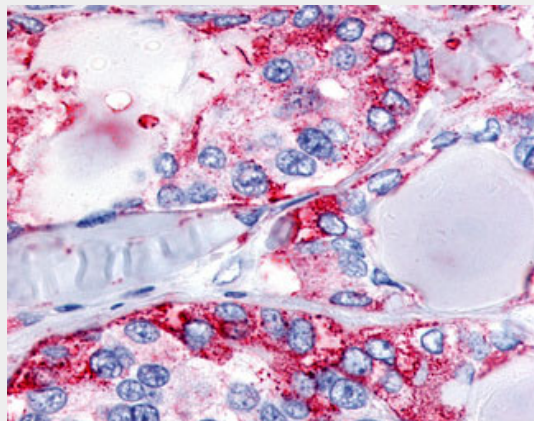
Provided below are standard protocols that you may find useful for product applications.

- [Western Blot](#)
- [Blocking Peptides](#)
- [Dot Blot](#)
- [Immunohistochemistry](#)
- [Immunofluorescence](#)
- [Immunoprecipitation](#)
- [Flow Cytometry](#)
- [Cell Culture](#)

CALCR / Calcitonin Receptor Antibody (C-Terminus) - Images



Anti-Calcitonin Receptor antibody ALS10163 IHC of human parathyroid.



Anti-CALCR / Calcitonin Receptor antibody IHC of human Thyroid, Medullary Carcinoma.

CALCR / Calcitonin Receptor Antibody (C-Terminus) - Background

This is a receptor for calcitonin. The activity of this receptor is mediated by G proteins which activate adenylyl cyclase. The calcitonin receptor is thought to couple to the heterotrimeric guanosine triphosphate-binding protein that is sensitive to cholera toxin.

CALCR / Calcitonin Receptor Antibody (C-Terminus) - References

Gorn A.H.,et al.J. Clin. Invest. 90:1726-1735(1992).
Kuestner R.E.,et al.Mol. Pharmacol. 46:246-255(1994).
Albrandt K.,et al.Endocrinology 136:5377-5384(1995).
Frendo J.L.,et al.FEBS Lett. 342:214-216(1994).
Nishikawa T.,et al.FEBS Lett. 458:409-414(1999).