

ADORA2B/Adenosine A2B Receptor Antibody (Internal)
Rabbit Polyclonal Antibody
Catalog # ALS10145

Specification

ADORA2B/Adenosine A2B Receptor Antibody (Internal) - Product Information

Application	IHC
Primary Accession	P29275
Reactivity	Human
Host	Rabbit
Clonality	Polyclonal
Calculated MW	36kDa KDa

ADORA2B/Adenosine A2B Receptor Antibody (Internal) - Additional Information

Gene ID 136

Other Names

Adenosine receptor A2b, ADORA2B

Target/Specificity

Human Adenosine A2b Receptor. BLAST analysis of the peptide immunogen showed no homology with other human proteins.

Reconstitution & Storage

Long term: -70°C; Short term: +4°C

Precautions

ADORA2B/Adenosine A2B Receptor Antibody (Internal) is for research use only and not for use in diagnostic or therapeutic procedures.

ADORA2B/Adenosine A2B Receptor Antibody (Internal) - Protein Information

Name ADORA2B

Function

Receptor for adenosine. The activity of this receptor is mediated by G proteins which activate adenylyl cyclase.

Cellular Location

Cell membrane; Multi-pass membrane protein.

Volume

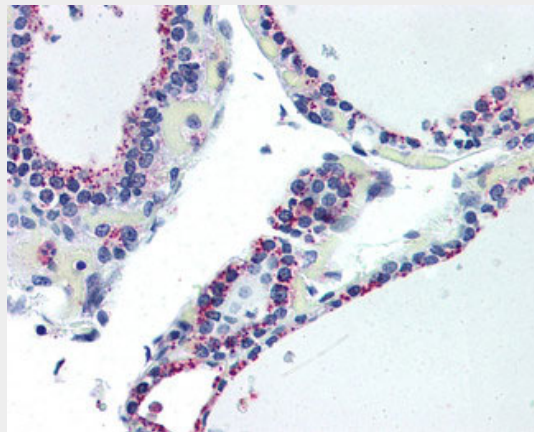
50 µl

ADORA2B/Adenosine A2B Receptor Antibody (Internal) - Protocols

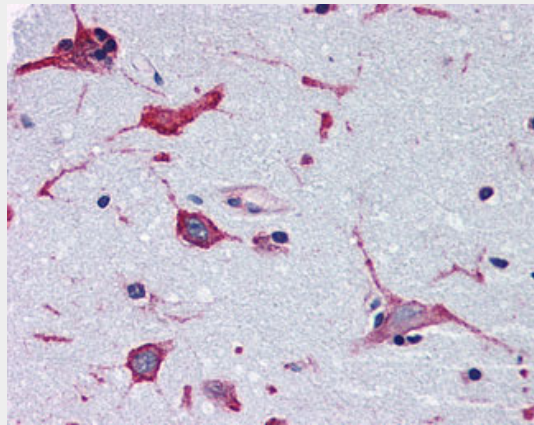
Provided below are standard protocols that you may find useful for product applications.

- [Western Blot](#)
- [Blocking Peptides](#)
- [Dot Blot](#)
- [Immunohistochemistry](#)
- [Immunofluorescence](#)
- [Immunoprecipitation](#)
- [Flow Cytometry](#)
- [Cell Culture](#)

ADORA2B/Adenosine A2B Receptor Antibody (Internal) - Images



Anti-Adenosine A2b Receptor antibody ALS10145 IHC of human thyroid.



Anti-Adenosine A2b Receptor antibody ALS10145 IHC of human brain, cortex.

ADORA2B/Adenosine A2B Receptor Antibody (Internal) - Background

#N/A

ADORA2B/Adenosine A2B Receptor Antibody (Internal) - References

#N/A