

GPR52 Antibody (Cytoplasmic Domain)
Rabbit Polyclonal Antibody
Catalog # ALS10117

Specification

GPR52 Antibody (Cytoplasmic Domain) - Product Information

Application	IHC
Primary Accession	O9Y2T5
Reactivity	Human
Host	Rabbit
Clonality	Polyclonal
Calculated MW	41kDa KDa

GPR52 Antibody (Cytoplasmic Domain) - Additional Information

Gene ID 9293

Other Names

Probable G-protein coupled receptor 52, GPR52

Target/Specificity

Human GPR52. BLAST analysis of the peptide immunogen showed no homology with other human proteins.

Reconstitution & Storage

Long term: -70°C; Short term: +4°C

Precautions

GPR52 Antibody (Cytoplasmic Domain) is for research use only and not for use in diagnostic or therapeutic procedures.

GPR52 Antibody (Cytoplasmic Domain) - Protein Information

Name GPR52 {ECO:0000303|PubMed:9931487, ECO:0000312|HGNC:HGNC:4508}

Function

Gs-coupled receptor activated by antipsychotics reserpine leading to an increase in intracellular cAMP and its internalization (PubMed:[24587241](http://www.uniprot.org/citations/24587241)). May play a role in locomotor activity through modulation of dopamine, NMDA and ADORA2A-induced locomotor activity. These behavioral changes are accompanied by modulation of the dopamine receptor signaling pathway in striatum (PubMed:[24587241](http://www.uniprot.org/citations/24587241)). Modulates HTT level via cAMP-dependent but PKA independent mechanisms through activation of RAB39B that translocates HTT to the endoplasmic reticulum, thus avoiding proteasome degradation (PubMed:[25738228](http://www.uniprot.org/citations/25738228)).

Cellular Location

Cell membrane; Multi-pass membrane protein.

Tissue Location

Expressed in brain, especially in striatum.

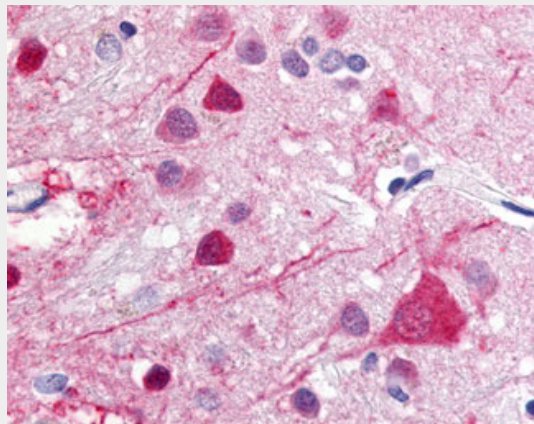
Volume

50 µl

GPR52 Antibody (Cytoplasmic Domain) - Protocols

Provided below are standard protocols that you may find useful for product applications.

- [Western Blot](#)
- [Blocking Peptides](#)
- [Dot Blot](#)
- [Immunohistochemistry](#)
- [Immunofluorescence](#)
- [Immunoprecipitation](#)
- [Flow Cytometry](#)
- [Cell Culture](#)

GPR52 Antibody (Cytoplasmic Domain) - Images

Anti-GPR52 antibody ALS10117 IHC of human brain.

GPR52 Antibody (Cytoplasmic Domain) - Background

Orphan receptor.

GPR52 Antibody (Cytoplasmic Domain) - References

Sawzdargo M., et al. Brain Res. Mol. Brain Res. 64:193-198(1999).
Gregory S.G., et al. Nature 441:315-321(2006).