

**CCR8 Antibody (N-Terminus)**  
**Rabbit Polyclonal Antibody**  
**Catalog # ALS10103**

**Specification**

---

**CCR8 Antibody (N-Terminus) - Product Information**

Application	IHC
Primary Accession	<a href="#">P51685</a>
Reactivity	Human
Host	Rabbit
Clonality	Polyclonal
Calculated MW	41kDa KDa

**CCR8 Antibody (N-Terminus) - Additional Information**

**Gene ID** 1237

**Other Names**

C-C chemokine receptor type 8, C-C CKR-8, CC-CKR-8, CCR-8, CC chemokine receptor CHEMR1, CMKBRL2, Chemokine receptor-like 1, CKR-L1, GPR-CY6, GPRCY6, TER1, CDw198, CCR8, CKRL1, CMKBR8, CMKBRL2

**Target/Specificity**

Human CCR8. BLAST analysis of the peptide immunogen showed no homology with other human proteins.

**Reconstitution & Storage**

Long term: -70°C; Short term: +4°C

**Precautions**

CCR8 Antibody (N-Terminus) is for research use only and not for use in diagnostic or therapeutic procedures.

**CCR8 Antibody (N-Terminus) - Protein Information**

**Name** CCR8

**Synonyms** CKRL1, CMKBR8, CMKBRL2

**Function**

Receptor for the chemokine CCL1/SCYA1/I-309. May regulate monocyte chemotaxis and thymic cell line apoptosis. Alternative coreceptor with CD4 for HIV-1 infection.

**Cellular Location**

Cell membrane; Multi-pass membrane protein.

**Volume**

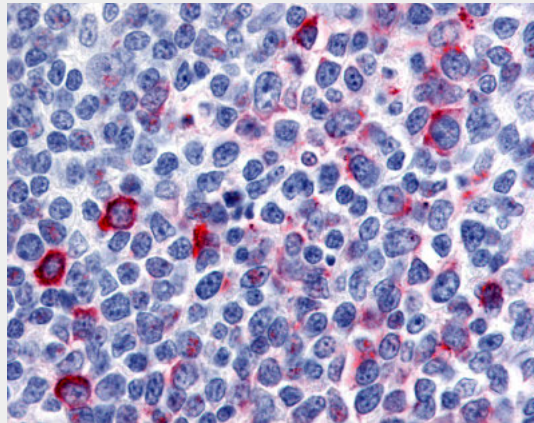
50 µl

## CCR8 Antibody (N-Terminus) - Protocols

Provided below are standard protocols that you may find useful for product applications.

- [Western Blot](#)
- [Blocking Peptides](#)
- [Dot Blot](#)
- [Immunohistochemistry](#)
- [Immunofluorescence](#)
- [Immunoprecipitation](#)
- [Flow Cytometry](#)
- [Cell Culture](#)

## CCR8 Antibody (N-Terminus) - Images



Anti-CCR8 antibody ALS10103 IHC of human tonsil, germinal center.

## CCR8 Antibody (N-Terminus) - Background

Receptor for the chemokine CCL1/SCYA1/I-309. May regulate monocyte chemotaxis and thymic cell line apoptosis. Alternative coreceptor with CD4 for HIV-1 infection.

## CCR8 Antibody (N-Terminus) - References

- Zaballos A., et al. *Biochem. Biophys. Res. Commun.* 227:846-853(1996).  
Samson M., et al. *Eur. J. Immunol.* 26:3021-3028(1996).  
Tiffany H.L., et al. *J. Exp. Med.* 186:165-170(1997).  
Napolitano M., et al. *J. Immunol.* 157:2759-2763(1996).  
Nakajima T., et al. Submitted (NOV-1997) to the EMBL/GenBank/DDBJ databases.