

CCR4 Antibody (N-Terminus)
Rabbit Polyclonal Antibody
Catalog # ALS10098**Specification**

CCR4 Antibody (N-Terminus) - Product Information

Application	IHC
Primary Accession	P51679
Reactivity	Human
Host	Rabbit
Clonality	Polyclonal
Calculated MW	41kDa KDa

CCR4 Antibody (N-Terminus) - Additional Information**Gene ID** 1233**Other Names**

C-C chemokine receptor type 4, C-C CKR-4, CC-CKR-4, CCR-4, CCR4, K5-5, CD194, CCR4, CMKBR4

Target/Specificity

Human CCR4. BLAST analysis of the peptide immunogen showed no homology with other human proteins.

Reconstitution & Storage

Long term: -70°C; Short term: +4°C

Precautions

CCR4 Antibody (N-Terminus) is for research use only and not for use in diagnostic or therapeutic procedures.

CCR4 Antibody (N-Terminus) - Protein Information**Name** CCR4**Synonyms** CMKBR4**Function**

High affinity receptor for the C-C type chemokines CCL17/TARC, CCL22/MDC and CKLF isoform 1/CKLF1. The activity of this receptor is mediated by G(i) proteins which activate a phosphatidylinositol-calcium second messenger system. Can function as a chemoattractant homing receptor on circulating memory lymphocytes and as a coreceptor for some primary HIV-2 isolates. In the CNS, could mediate hippocampal-neuron survival.

Cellular Location

Cell membrane; Multi-pass membrane protein.

Tissue Location

Predominantly expressed in the thymus, in peripheral blood leukocytes, including T-cells, mostly CD4+ cells, and basophils, and in platelets; at lower levels, in the spleen and in monocytes (PubMed:10754297, PubMed:9169480). Detected also in macrophages, IL-2-activated natural killer cells and skin-homing memory T-cells, mostly the ones expressing the cutaneous lymphocyte antigen (CLA). Expressed in brain microvascular and coronary artery endothelial cells (PubMed:10754297).

Volume

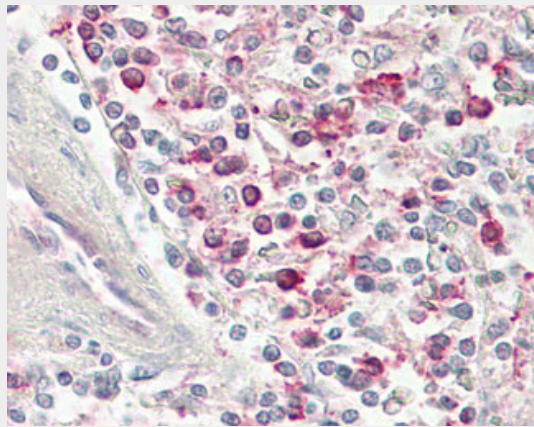
72 μ l

CCR4 Antibody (N-Terminus) - Protocols

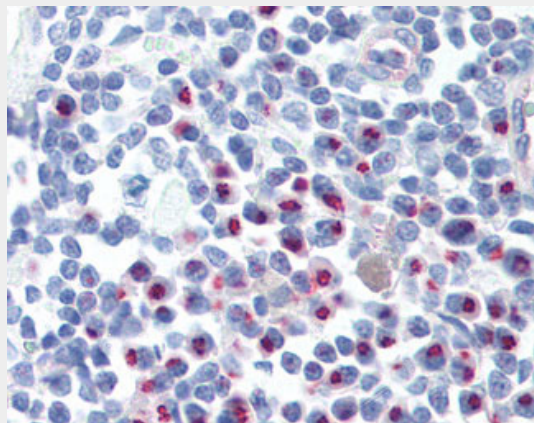
Provided below are standard protocols that you may find useful for product applications.

- [Western Blot](#)
- [Blocking Peptides](#)
- [Dot Blot](#)
- [Immunohistochemistry](#)
- [Immunofluorescence](#)
- [Immunoprecipitation](#)
- [Flow Cytometry](#)
- [Cell Culture](#)

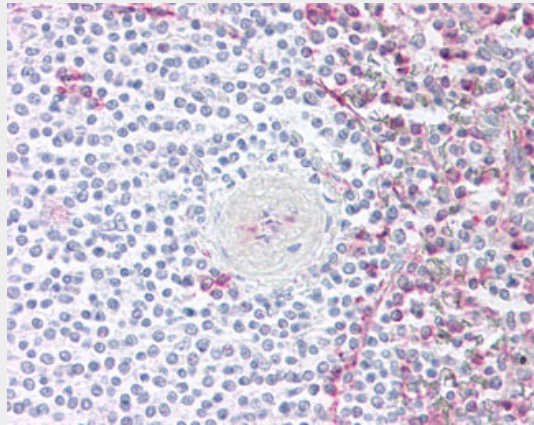
CCR4 Antibody (N-Terminus) - Images



Anti-CCR4 antibody IHC of human spleen.



Anti-CCR4 antibody ALS10098 IHC of human lymph node.



Anti-CCR4 antibody IHC of human spleen.

CCR4 Antibody (N-Terminus) - Background

High affinity receptor for the C-C type chemokines CCL17/TARC, CCL22/MDC and CKLF isoform 1/CKLF1. The activity of this receptor is mediated by G(i) proteins which activate a phosphatidylinositol-calcium second messenger system. Can function as a chemoattractant homing receptor on circulating memory lymphocytes and as a coreceptor for some primary HIV-2 isolates. In the CNS, could mediate hippocampal-neuron survival.

CCR4 Antibody (N-Terminus) - References

- Power C.A., et al. J. Biol. Chem. 270:19495-19500(1995).
- Kato H., et al. Genes Immun. 1:97-104(1999).
- Kopatz S.A., et al. Submitted (JUN-2003) to the EMBL/GenBank/DDBJ databases.
- Imai T., et al. J. Biol. Chem. 272:15036-15042(1997).
- Imai T., et al. J. Biol. Chem. 273:1764-1768(1998).