

SREB / GPR85 Antibody (C-Terminus)
Rabbit Polyclonal Antibody
Catalog # ALS10095**Specification**

SREB / GPR85 Antibody (C-Terminus) - Product Information

Application	IHC
Primary Accession	P60893
Reactivity	Human, Mouse, Rabbit, Zebrafish, Hamster, Monkey, Pig, Chicken, Horse, Xenopus, Bovine, Dog
Host	Rabbit
Clonality	Polyclonal
Calculated MW	42kDa KDa

SREB / GPR85 Antibody (C-Terminus) - Additional Information**Gene ID** 54329**Other Names**

Probable G-protein coupled receptor 85, Super conserved receptor expressed in brain 2, GPR85, SREB2

Target/Specificity

Human GPR85. BLAST analysis of the peptide immunogen showed no homology with other human proteins, except NLRC3 (40%).

Reconstitution & Storage

Long term: -70°C; Short term: +4°C

Precautions

SREB / GPR85 Antibody (C-Terminus) is for research use only and not for use in diagnostic or therapeutic procedures.

SREB / GPR85 Antibody (C-Terminus) - Protein Information**Name** GPR85**Synonyms** SREB2**Function**

Orphan receptor.

Cellular Location

Cell membrane; Multi-pass membrane protein. Endoplasmic reticulum

Tissue Location

Highly expressed in brain and testis. Lower levels in small intestine, placenta and spleen. In brain

regions, detected in all regions tested, but somewhat lower levels in the corpus callosum, medulla and spinal cord.

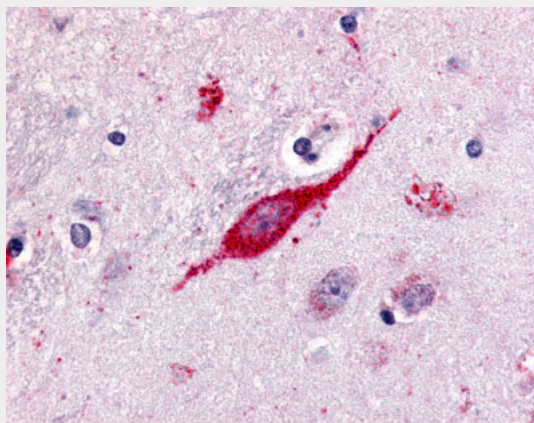
Volume

50 μ l

SREB / GPR85 Antibody (C-Terminus) - Protocols

Provided below are standard protocols that you may find useful for product applications.

- [Western Blot](#)
- [Blocking Peptides](#)
- [Dot Blot](#)
- [Immunohistochemistry](#)
- [Immunofluorescence](#)
- [Immunoprecipitation](#)
- [Flow Cytometry](#)
- [Cell Culture](#)

SREB / GPR85 Antibody (C-Terminus) - Images

Anti-GPR85 antibody ALS10095 IHC of human brain, neuron.

SREB / GPR85 Antibody (C-Terminus) - Background

Orphan receptor.

SREB / GPR85 Antibody (C-Terminus) - References

Hellebrand S., et al. *Biochim. Biophys. Acta* 1493:269-272(2000).
Matsumoto M., et al. *Biochem. Biophys. Res. Commun.* 272:576-582(2000).
Suwa M., et al. Submitted (JUL-2001) to the EMBL/GenBank/DDBJ databases.
Bechtel S., et al. *BMC Genomics* 8:399-399(2007).
Hillier L.W., et al. *Nature* 424:157-164(2003).