

**GPR4 Antibody (Cytoplasmic Domain)**  
**Rabbit Polyclonal Antibody**  
**Catalog # ALS10048**

**Specification**

---

**GPR4 Antibody (Cytoplasmic Domain) - Product Information**

Application	IHC
Primary Accession	<a href="#">P46093</a>
Reactivity	Human, Monkey, Pig, Dog
Host	Rabbit
Clonality	Polyclonal
Calculated MW	41kDa KDa

**GPR4 Antibody (Cytoplasmic Domain) - Additional Information**

**Gene ID** 2828

**Other Names**

G-protein coupled receptor 4, G-protein coupled receptor 19, GPR4, GPR19

**Target/Specificity**

Human GPR4. BLAST analysis of the peptide immunogen showed no homology with other human proteins.

**Reconstitution & Storage**

Long term: -70°C; Short term: +4°C

**Precautions**

GPR4 Antibody (Cytoplasmic Domain) is for research use only and not for use in diagnostic or therapeutic procedures.

**GPR4 Antibody (Cytoplasmic Domain) - Protein Information**

**Name** GPR4

**Function**

Proton-sensing G-protein coupled receptor couples to multiple intracellular signaling pathways, including GNAS/cAMP, GNAQ/phospholipase C (PLC), and GNA12/GNA13/Rho pathways (PubMed: [12955148](http://www.uniprot.org/citations/12955148), PubMed: [17462861](http://www.uniprot.org/citations/17462861), PubMed: [20211729](http://www.uniprot.org/citations/20211729), PubMed: [22110680](http://www.uniprot.org/citations/22110680)). Acidosis-induced GPR4 activation increases paracellular gap formation and permeability of vascular endothelial cells through the GNA12/GNA13/Rho GTPase signaling pathway (PubMed: [32058960](http://www.uniprot.org/citations/32058960)). In the brain may mediate central respiratory sensitivity to CO<sub>2</sub>H(+) (By similarity).

**Cellular Location**

Cell membrane; Multi-pass membrane protein

**Volume**

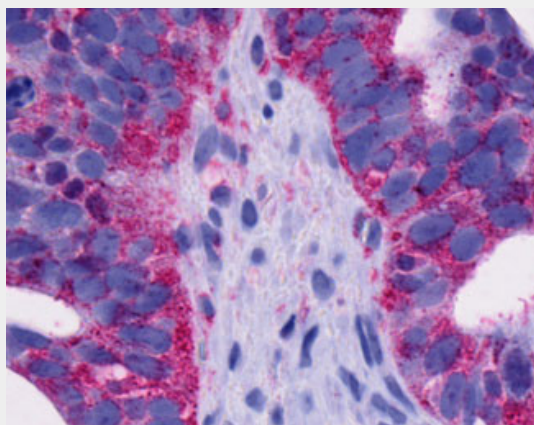
50  $\mu$ l

### **GPR4 Antibody (Cytoplasmic Domain) - Protocols**

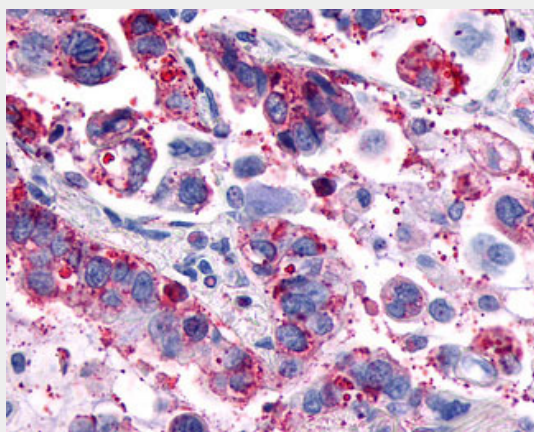
Provided below are standard protocols that you may find useful for product applications.

- [Western Blot](#)
- [Blocking Peptides](#)
- [Dot Blot](#)
- [Immunohistochemistry](#)
- [Immunofluorescence](#)
- [Immunoprecipitation](#)
- [Flow Cytometry](#)
- [Cell Culture](#)

### **GPR4 Antibody (Cytoplasmic Domain) - Images**



Anti-GPR4 antibody IHC of human Ovary, Carcinoma.



Anti-GPR4 antibody IHC of human Lung, Adenocarcinoma.

### **GPR4 Antibody (Cytoplasmic Domain) - Background**

Proton-sensing receptor coupled to several G-proteins, including G(s), G(13) and G(q)/G(11)

proteins, leading to cAMP production.

#### **GPR4 Antibody (Cytoplasmic Domain) - References**

Heiber M., et al. *DNA Cell Biol.* 14:25-35(1995).

Mahadevan M.S., et al. *Genomics* 30:84-88(1995).

An S., et al. *FEBS Lett.* 375:121-124(1995).

Kaighin V.A., et al. Submitted (DEC-2007) to the EMBL/GenBank/DDBJ databases.

Ota T., et al. *Nat. Genet.* 36:40-45(2004).