

CNR2 / CB2 Antibody (Cytoplasmic Domain)
Rabbit Polyclonal Antibody
Catalog # ALS10012

Specification

CNR2 / CB2 Antibody (Cytoplasmic Domain) - Product Information

Application	IHC
Primary Accession	P34972
Reactivity	Human, Monkey, Dog
Host	Rabbit
Clonality	Polyclonal
Calculated MW	40kDa KDa

CNR2 / CB2 Antibody (Cytoplasmic Domain) - Additional Information

Gene ID 1269

Other Names

Cannabinoid receptor 2, CB-2, CB2, hCB2, CX5, CNR2, CB2A, CB2B

Target/Specificity

Human CNR2 / CB2. BLAST analysis of the peptide immunogen showed no homology with other human proteins, except CNR1 (60%).

Reconstitution & Storage

Long term: -70°C; Short term: +4°C

Precautions

CNR2 / CB2 Antibody (Cytoplasmic Domain) is for research use only and not for use in diagnostic or therapeutic procedures.

CNR2 / CB2 Antibody (Cytoplasmic Domain) - Protein Information

Name CNR2

Synonyms CB2A, CB2B

Function

Heterotrimeric G protein-coupled receptor for endocannabinoid 2-arachidonoylglycerol mediating inhibition of adenylate cyclase. May function in inflammatory response, nociceptive transmission and bone homeostasis.

Cellular Location

Cell membrane; Multi-pass membrane protein. Cell projection, dendrite. Perikaryon Note=Localizes to apical dendrite of pyramidal neurons.

Tissue Location

Preferentially expressed in cells of the immune system with higher expression in B-cells and NK

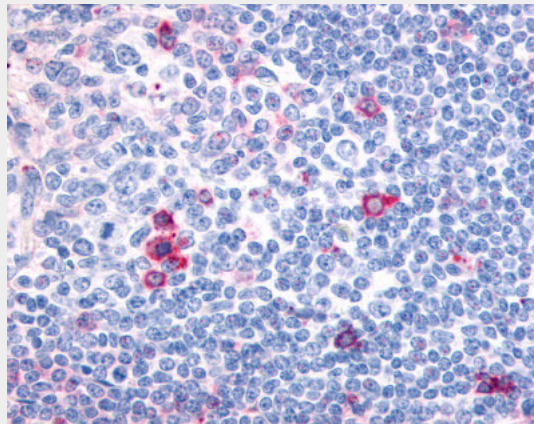
cells (at protein level). Expressed in skin in suprabasal layers and hair follicles (at protein level). Highly expressed in tonsil and to a lower extent in spleen, peripheral blood mononuclear cells, and thymus. PubMed:14657172 could not detect expression in normal brain. Expressed in brain by perivascular microglial cells and dorsal root ganglion sensory neurons (at protein level). Two isoforms are produced by alternative promoter usage and differ only in the 5' UTR: isoform CB2A is observed predominantly in testis with some expression in brain, while isoform CB2B is predominant in spleen and leukocytes

CNR2 / CB2 Antibody (Cytoplasmic Domain) - Protocols

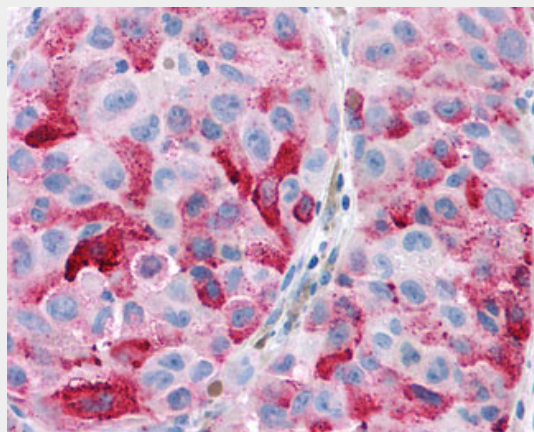
Provided below are standard protocols that you may find useful for product applications.

- [Western Blot](#)
- [Blocking Peptides](#)
- [Dot Blot](#)
- [Immunohistochemistry](#)
- [Immunofluorescence](#)
- [Immunoprecipitation](#)
- [Flow Cytometry](#)
- [Cell Culture](#)

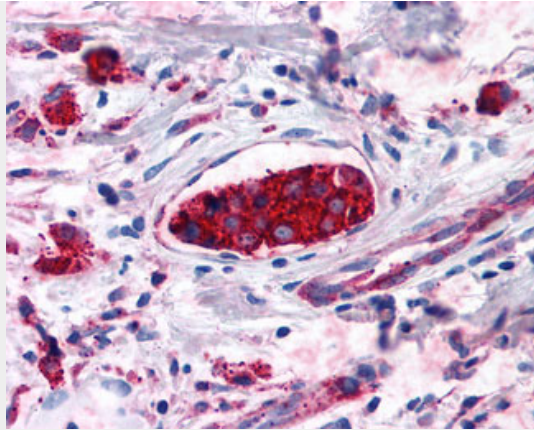
CNR2 / CB2 Antibody (Cytoplasmic Domain) - Images



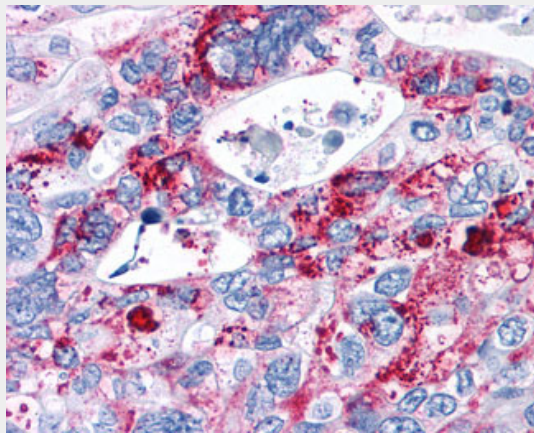
Anti-CNR2 / CB2 antibody ALS10012 IHC of human tonsil, germinal center and mantle zone.



Anti-CNR2 / CB2 antibody IHC of human Skin, Melanoma.



Anti-CNR2 / CB2 antibody IHC of human Breast, Carcinoma.



Anti-CNR2 / CB2 antibody IHC of human Pancreas, Carcinoma.

CNR2 / CB2 Antibody (Cytoplasmic Domain) - Background

Heterotrimeric G protein-coupled receptor for endocannabinoid 2-arachidonoylglycerol mediating inhibition of adenylate cyclase. May function in inflammatory response, nociceptive transmission and bone homeostasis.

CNR2 / CB2 Antibody (Cytoplasmic Domain) - References

- Munro S.,et al.Nature 365:61-65(1993).
- Liu Q.-R.,et al.Genes Brain Behav. 8:519-530(2009).
- Bruess M.,et al.Submitted (FEB-2003) to the EMBL/GenBank/DDBJ databases.
- Warren C.N.,et al.Submitted (FEB-2003) to the EMBL/GenBank/DDBJ databases.
- Saravanan T.,et al.Submitted (NOV-2005) to the EMBL/GenBank/DDBJ databases.