

**C3AR / C3a Receptor Antibody (C-Terminus)**  
**Rabbit Polyclonal Antibody**  
**Catalog # ALS10008**

**Specification**

---

**C3AR / C3a Receptor Antibody (C-Terminus) - Product Information**

Application	IHC
Primary Accession	<a href="#">O16581</a>
Reactivity	Human
Host	Rabbit
Clonality	Polyclonal
Calculated MW	54kDa KDa

**C3AR / C3a Receptor Antibody (C-Terminus) - Additional Information**

**Gene ID** 719

**Other Names**

C3a anaphylatoxin chemotactic receptor, C3AR, C3a-R, C3AR1, AZ3B, C3R1, HNFAG09

**Target/Specificity**

Human C3a Receptor. BLAST analysis of the peptide immunogen showed no homology with other human proteins.

**Reconstitution & Storage**

Long term: -70°C; Short term: +4°C

**Precautions**

C3AR / C3a Receptor Antibody (C-Terminus) is for research use only and not for use in diagnostic or therapeutic procedures.

**C3AR / C3a Receptor Antibody (C-Terminus) - Protein Information**

**Name** C3AR1

**Synonyms** AZ3B, C3R1, HNFAG09

**Function**

Receptor for the chemotactic and inflammatory peptide anaphylatoxin C3a. This receptor stimulates chemotaxis, granule enzyme release and superoxide anion production.

**Cellular Location**

Cell membrane; Multi-pass membrane protein.

**Tissue Location**

Widely expressed in several differentiated hematopoietic cell lines, in the lung, spleen, ovary, placenta, small intestine, throughout the brain, heart, and endothelial cells. Mostly expressed in lymphoid tissues

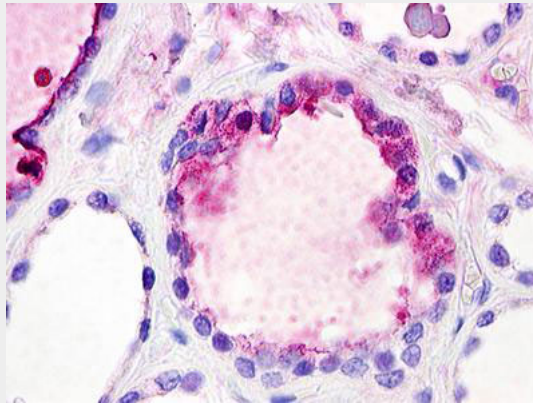
**Volume**  
50 µl

### **C3AR / C3a Receptor Antibody (C-Terminus) - Protocols**

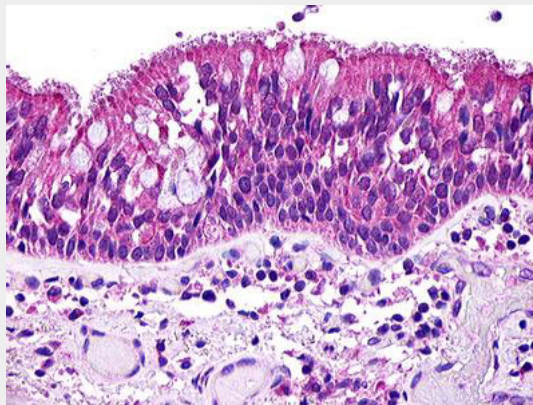
Provided below are standard protocols that you may find useful for product applications.

- [Western Blot](#)
- [Blocking Peptides](#)
- [Dot Blot](#)
- [Immunohistochemistry](#)
- [Immunofluorescence](#)
- [Immunoprecipitation](#)
- [Flow Cytometry](#)
- [Cell Culture](#)

### **C3AR / C3a Receptor Antibody (C-Terminus) - Images**



Anti-C3AR / C3a Receptor antibody IHC of human thyroid.



Anti-C3AR / C3a Receptor antibody IHC of human lung, respiratory epithelium.

### **C3AR / C3a Receptor Antibody (C-Terminus) - Background**

Receptor for the chemotactic and inflammatory peptide anaphylatoxin C3a. This receptor stimulates chemotaxis, granule enzyme release and superoxide anion production.

### **C3AR / C3a Receptor Antibody (C-Terminus) - References**

Roglic A., et al. *Biochim. Biophys. Acta* 1305:39-43(1996).  
Crass T., et al. *Eur. J. Immunol.* 26:1944-1950(1996).  
Bautsch W., et al. Submitted (JAN-1998) to the EMBL/GenBank/DDBJ databases.  
Ames R.S., et al. *J. Biol. Chem.* 271:20231-20234(1996).  
Suwa M., et al. Submitted (JUL-2001) to the EMBL/GenBank/DDBJ databases.