

GTF2E1 antibody - C-terminal region
Rabbit Polyclonal Antibody
Catalog # AI16259**Specification**

GTF2E1 antibody - C-terminal region - Product Information

Application	IHC, WB
Primary Accession	P29083
Other Accession	NM_005513 , NP_005504
Reactivity	Mouse, Rat, Rabbit, Horse, Bovine, Guinea Pig, Dog
Predicted	Mouse, Rat, Rabbit, Chicken, Horse, Bovine, Guinea Pig, Dog
Host	Rabbit
Clonality	Polyclonal
Calculated MW	49kDa kDa

GTF2E1 antibody - C-terminal region - Additional Information**Gene ID** 2960**Alias Symbol** FE, TF2E1, TFIIE-A**Other Names**

General transcription factor IIE subunit 1, General transcription factor IIE 56 kDa subunit, Transcription initiation factor IIE subunit alpha, TFIIE-alpha, GTF2E1, TF2E1

Format

Liquid. Purified antibody supplied in 1x PBS buffer with 0.09% (w/v) sodium azide and 2% sucrose.

Reconstitution & Storage

Add 50 ul of distilled water. Final anti-GTF2E1 antibody concentration is 1 mg/ml in PBS buffer with 2% sucrose. For longer periods of storage, store at 20°C. Avoid repeat freeze-thaw cycles.

Precautions

GTF2E1 antibody - C-terminal region is for research use only and not for use in diagnostic or therapeutic procedures.

GTF2E1 antibody - C-terminal region - Protein Information**Name** GTF2E1**Synonyms** TF2E1**Function**

Recruits TFIIH to the initiation complex and stimulates the RNA polymerase II C-terminal domain kinase and DNA-dependent ATPase activities of TFIIH. Both TFIIH and TFIIE are required for promoter clearance by RNA polymerase.

Cellular Location

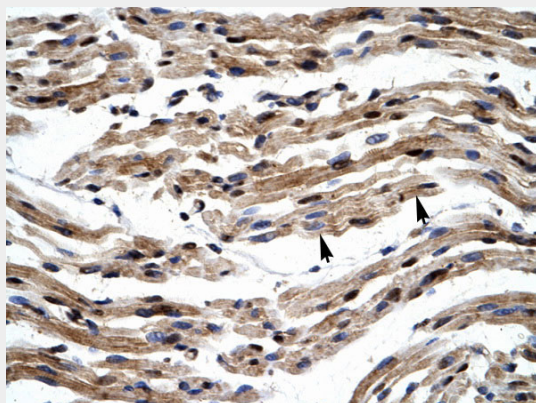
Nucleus

GTF2E1 antibody - C-terminal region - Protocols

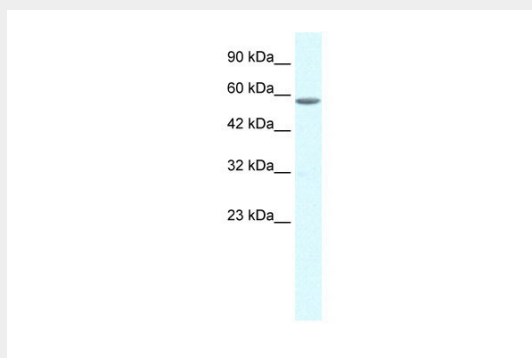
Provided below are standard protocols that you may find useful for product applications.

- [Western Blot](#)
- [Blocking Peptides](#)
- [Dot Blot](#)
- [Immunohistochemistry](#)
- [Immunofluorescence](#)
- [Immunoprecipitation](#)
- [Flow Cytometry](#)
- [Cell Culture](#)

GTF2E1 antibody - C-terminal region - Images



Human Muscle



WB Suggested Anti-GTF2E1 Antibody Titration: 0.2-1 $\mu\text{g/ml}$

Positive Control: Daudi cell lysate

GTF2E1 antibody - C-terminal region - Background

Recruits TFIIF to the initiation complex and stimulates the RNA polymerase II C-terminal domain kinase and DNA-dependent ATPase activities of TFIIF. Both TFIIF and TFIIE are required for promoter clearance by RNA polymerase.

GTF2E1 antibody - C-terminal region - References

- Peterson M.G., et al. Nature 354:369-373(1991).
Ohkuma Y., et al. Nature 354:398-401(1991).
Bienvenut W.V., et al. Submitted (JAN-2010) to UniProtKB.
Hisatake K., et al. Proc. Natl. Acad. Sci. U.S.A. 92:8195-8199(1995).
Di Valentin E., et al. Biol. Chem. 386:255-267(2005).