

ELF1 antibody - middle region
Rabbit Polyclonal Antibody
Catalog # AI16254**Specification**

ELF1 antibody - middle region - Product Information

Application	WB
Primary Accession	P32519
Other Accession	NM_172373 , NP_758961
Reactivity	Human, Rabbit, Horse
Predicted	Human, Rabbit, Horse
Host	Rabbit
Clonality	Polyclonal
Calculated MW	67kDa KDa

ELF1 antibody - middle region - Additional Information**Gene ID** 1997**Other Names**

ETS-related transcription factor Elf-1, E74-like factor 1, ELF1

Format

Liquid. Purified antibody supplied in 1x PBS buffer with 0.09% (w/v) sodium azide and 2% sucrose.

Reconstitution & Storage

Add 50 ul of distilled water. Final anti-ELF1 antibody concentration is 1 mg/ml in PBS buffer with 2% sucrose. For longer periods of storage, store at 20°C. Avoid repeat freeze-thaw cycles.

Precautions

ELF1 antibody - middle region is for research use only and not for use in diagnostic or therapeutic procedures.

ELF1 antibody - middle region - Protein Information**Name** ELF1**Function**

Transcription factor that activates the LYN and BLK promoters. Appears to be required for the T-cell-receptor-mediated trans activation of HIV-2 gene expression. Binds specifically to two purine-rich motifs in the HIV-2 enhancer.

Cellular Location

Nucleus.

Tissue Location

In fetal tissues, it is highly expressed in heart, lung liver and kidney, and weakly expressed in brain. In adult, it is highly expressed in pancreas, spleen, thymus and peripheral blood leukocytes,

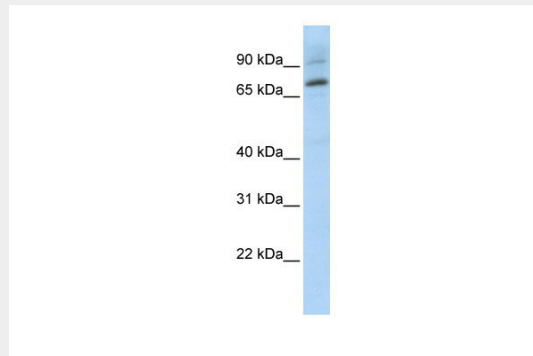
expressed at moderate levels in heart, placenta, lung, liver, skeletal muscle, kidney, prostate, ovary, small intestine and colon, and weakly expressed in brain and testis

ELF1 antibody - middle region - Protocols

Provided below are standard protocols that you may find useful for product applications.

- [Western Blot](#)
- [Blocking Peptides](#)
- [Dot Blot](#)
- [Immunohistochemistry](#)
- [Immunofluorescence](#)
- [Immunoprecipitation](#)
- [Flow Cytometry](#)
- [Cell Culture](#)

ELF1 antibody - middle region - Images



WB Suggested Anti-ELF1 Antibody Titration: 0.2-1 $\mu\text{g/ml}$

ELISA Titer: 1:12500

Positive Control: Transfected 293T

ELF1 antibody - middle region - Background

Transcription factor that activates the LYN and BLK promoters. Appears to be required for the T-cell-receptor-mediated trans activation of HIV-2 gene expression. Binds specifically to two purine-rich motifs in the HIV-2 enhancer.

ELF1 antibody - middle region - References

Leiden J.M., et al. *J. Virol.* 66:5890-5897(1992).

Ota T., et al. *Nat. Genet.* 36:40-45(2004).

Dunham A., et al. *Nature* 428:522-528(2004).

Mural R.J., et al. Submitted (JUL-2005) to the EMBL/GenBank/DDBJ databases.

Thompson C.B., et al. *Mol. Cell. Biol.* 12:1043-1053(1992).