

ELK3 antibody - middle region
Rabbit Polyclonal Antibody
Catalog # AI16251**Specification**

ELK3 antibody - middle region - Product Information

Application	WB
Primary Accession	P41970
Other Accession	NM_005230 , NP_005221
Reactivity	Human, Mouse, Rat, Rabbit, Horse, Bovine, Guinea Pig, Dog
Predicted	Human, Mouse, Rat, Rabbit, Chicken, Horse, Bovine, Guinea Pig, Dog
Host	Rabbit
Clonality	Polyclonal
Calculated MW	44kDa kDa

ELK3 antibody - middle region - Additional Information**Gene ID** 2004**Alias Symbol** ERP, NET, SAP2**Other Names**

ETS domain-containing protein Elk-3, ETS-related protein ERP, ETS-related protein NET, Serum response factor accessory protein 2, SAP-2, SRF accessory protein 2, ELK3, NET, SAP2

Format

Liquid. Purified antibody supplied in 1x PBS buffer with 0.09% (w/v) sodium azide and 2% sucrose.

Reconstitution & Storage

Add 50 ul of distilled water. Final anti-ELK3 antibody concentration is 1 mg/ml in PBS buffer with 2% sucrose. For longer periods of storage, store at 20°C. Avoid repeat freeze-thaw cycles.

Precautions

ELK3 antibody - middle region is for research use only and not for use in diagnostic or therapeutic procedures.

ELK3 antibody - middle region - Protein Information**Name** ELK3**Synonyms** NET, SAP2**Function**

May be a negative regulator of transcription, but can activate transcription when coexpressed with Ras, Src or Mos. Forms a ternary complex with the serum response factor and the ETS and SRF motifs of the Fos serum response element.

Cellular Location

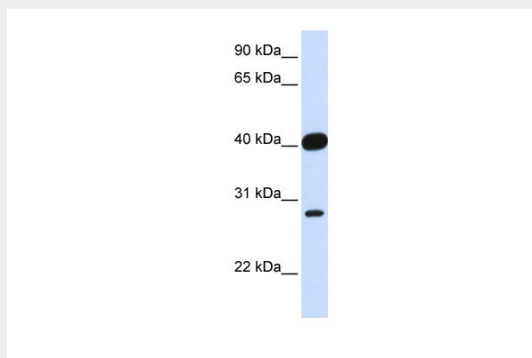
Nucleus.

ELK3 antibody - middle region - Protocols

Provided below are standard protocols that you may find useful for product applications.

- [Western Blot](#)
- [Blocking Peptides](#)
- [Dot Blot](#)
- [Immunohistochemistry](#)
- [Immunofluorescence](#)
- [Immunoprecipitation](#)
- [Flow Cytometry](#)
- [Cell Culture](#)

ELK3 antibody - middle region - Images



WB Suggested Anti-ELK3 Antibody Titration: 0.2-1 $\mu\text{g/ml}$

ELISA Titer: 1:62500

Positive Control: Human heart

ELK3 antibody - middle region - Background

May be a negative regulator of transcription, but can activate transcription when coexpressed with Ras, Src or Mos. Forms a ternary complex with the serum response factor and the ETS and SRF motifs of the Fos serum response element.

ELK3 antibody - middle region - References

Giovane A., et al. *Genes Dev.* 8:1502-1513(1994).

Price M.A., et al. *EMBO J.* 14:2589-2601(1995).

Ebert L., et al. Submitted (JUN-2004) to the EMBL/GenBank/DDBJ databases.

Ota T., et al. *Nat. Genet.* 36:40-45(2004).

Mural R.J., et al. Submitted (JUL-2005) to the EMBL/GenBank/DDBJ databases.