

LHX1 antibody - C-terminal region
Rabbit Polyclonal Antibody
Catalog # AI16250**Specification**

LHX1 antibody - C-terminal region - Product Information

Application	IHC, WB
Primary Accession	P48742
Other Accession	NM_005568 , NP_005559
Reactivity	Human, Mouse, Rat, Bovine
Predicted	Human, Mouse, Rat, Chicken, Bovine
Host	Rabbit
Clonality	Polyclonal
Calculated MW	45kDa KDa

LHX1 antibody - C-terminal region - Additional Information**Gene ID** 3975**Alias Symbol** LIM1, LIM-1**Other Names**

LIM/homeobox protein Lhx1, LIM homeobox protein 1, Homeobox protein Lim-1, hLim-1, LHX1, LIM-1, LIM1

Format

Liquid. Purified antibody supplied in 1x PBS buffer with 0.09% (w/v) sodium azide and 2% sucrose.

Reconstitution & Storage

Add 100 ul of distilled water. Final anti-LHX1 antibody concentration is 1 mg/ml in PBS buffer with 2% sucrose. For longer periods of storage, store at 20°C. Avoid repeat freeze-thaw cycles.

Precautions

LHX1 antibody - C-terminal region is for research use only and not for use in diagnostic or therapeutic procedures.

LHX1 antibody - C-terminal region - Protein Information**Name** LHX1**Synonyms** LIM-1, LIM1**Function**

Potential transcription factor. May play a role in early mesoderm formation and later in lateral mesoderm differentiation and neurogenesis.

Cellular Location

Nucleus.

Tissue Location

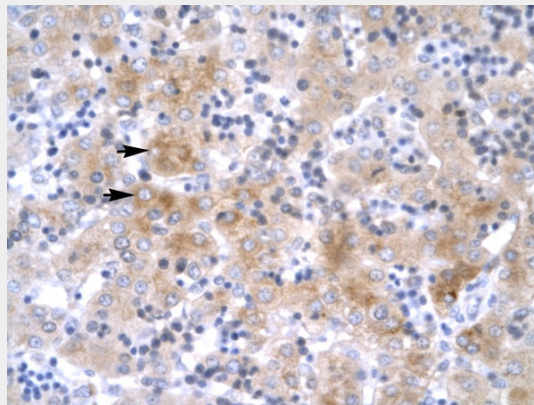
Expressed in the brain, thymus, and tonsils. Expressed in samples from patients with chronic myeloid leukemia (CML) and in 58% of acute myeloid leukemia (AML) cell lines

LHX1 antibody - C-terminal region - Protocols

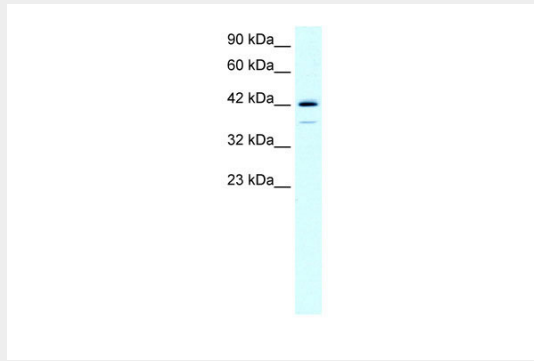
Provided below are standard protocols that you may find useful for product applications.

- [Western Blot](#)
- [Blocking Peptides](#)
- [Dot Blot](#)
- [Immunohistochemistry](#)
- [Immunofluorescence](#)
- [Immunoprecipitation](#)
- [Flow Cytometry](#)
- [Cell Culture](#)

LHX1 antibody - C-terminal region - Images



Human Liver



90 kDa
60 kDa
42 kDa
32 kDa
23 kDa

WB Suggested Anti-LHX1 Antibody Titration: 0.4 μ g/ml
Positive Control: HepG2 cell lysate

LHX1 antibody - C-terminal region - Background

Potential transcription factor. May play a role in early mesoderm formation and later in lateral mesoderm differentiation and neurogenesis.

LHX1 antibody - C-terminal region - References

Dong W.F., et al. *DNA Cell Biol.* 16:671-678(1997).

Zody M.C., et al. *Nature* 440:1045-1049(2006).