

NR2F2 antibody - N-terminal region
Rabbit Polyclonal Antibody
Catalog # AI16245**Specification**

NR2F2 antibody - N-terminal region - Product Information

Application	IHC, WB
Primary Accession	P24468
Other Accession	NM_021005 , NP_066285
Reactivity	Human, Mouse, Rat, Rabbit, Pig, Sheep, Bovine, Dog
Predicted	Human, Mouse, Rat, Rabbit, Pig, Chicken, Sheep, Bovine, Dog
Host	Rabbit
Clonality	Polyclonal
Calculated MW	45kDa KDa

NR2F2 antibody - N-terminal region - Additional Information**Gene ID** 7026**Alias Symbol** ARP1, COUP-TFII, COUPTFB, MGC117452, SVP40, TFCOUP2, NF-E3, NR2F1, COUPTFII**Other Names**

COUP transcription factor 2, COUP-TF2, Apolipoprotein A-I regulatory protein 1, ARP-1, COUP transcription factor II, COUP-TF II, Nuclear receptor subfamily 2 group F member 2, NR2F2, ARP1, TFCOUP2

Format

Liquid. Purified antibody supplied in 1x PBS buffer with 0.09% (w/v) sodium azide and 2% sucrose.

Reconstitution & Storage

Add 50 ul of distilled water. Final anti-NR2F2 antibody concentration is 1 mg/ml in PBS buffer with 2% sucrose. For longer periods of storage, store at 20°C. Avoid repeat freeze-thaw cycles.

Precautions

NR2F2 antibody - N-terminal region is for research use only and not for use in diagnostic or therapeutic procedures.

NR2F2 antibody - N-terminal region - Protein Information**Name** NR2F2**Synonyms** ARP1, TFCOUP2**Function**

Ligand-activated transcription factor. Activated by high concentrations of 9-cis-retinoic acid and all-trans-retinoic acid, but not by dexamethasone, cortisol or progesterone (in vitro). Regulation of

the apolipoprotein A-I gene transcription. Binds to DNA site A. May be required to establish ovary identity during early gonad development (PubMed:29478779).

Cellular Location

Nucleus.

Tissue Location

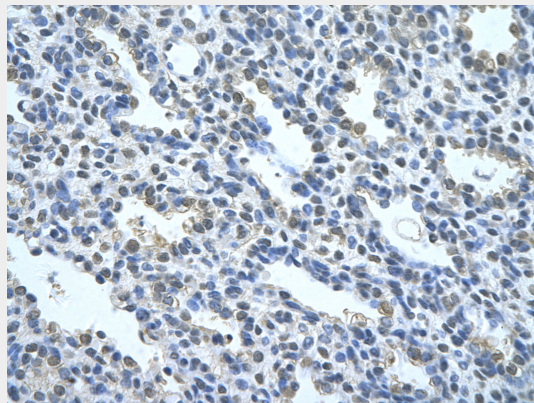
Ubiquitous. Expressed in the stromal cells of developing fetal ovaries (PubMed:29478779)

NR2F2 antibody - N-terminal region - Protocols

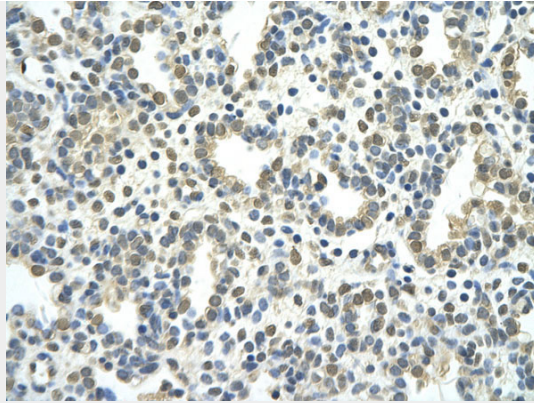
Provided below are standard protocols that you may find useful for product applications.

- [Western Blot](#)
- [Blocking Peptides](#)
- [Dot Blot](#)
- [Immunohistochemistry](#)
- [Immunofluorescence](#)
- [Immunoprecipitation](#)
- [Flow Cytometry](#)
- [Cell Culture](#)

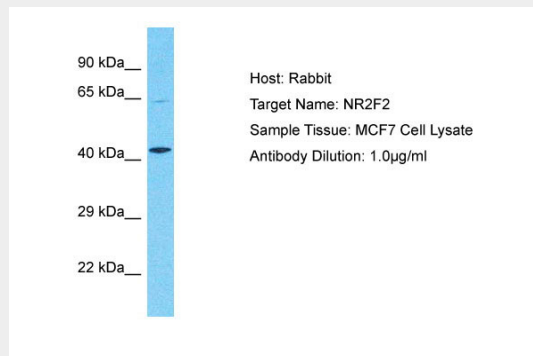
NR2F2 antibody - N-terminal region - Images



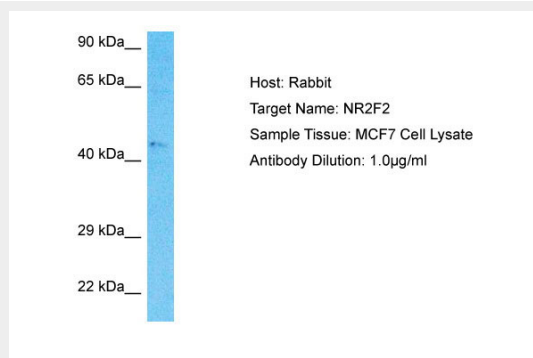
Rabbit Anti-NR2F2 Antibody
Paraffin Embedded Tissue: Human alveolar cell
Cellular Data: Epithelial cells of renal tubule
Antibody Concentration: 4.0-8.0 µg/ml
Magnification: 400X



Rabbit Anti-NR2F2 antibody
Paraffin Embedded Tissue: Human Lung cell
Cellular Data: alveolar cell
Antibody Concentration: 4.0-8.0 µg/ml
Magnification: 400X



Host: Rabbit
Target Name: NR2F2
Sample Tissue: MCF7 Whole cell lysate
s
Antibody Dilution: 1.0µg/ml



Host: Rabbit
Target Name: NR2F2
Sample Tissue: MCF7 Whole cell lysate
s
Antibody Dilution: 1.0µg/ml

NR2F2 antibody - N-terminal region - Background

Ligand-activated transcription factor. Activated by high concentrations of 9-cis-retinoic acid and

all-trans-retinoic acid, but not by dexamethasone, cortisol or progesterone (in vitro). Regulation of the apolipoprotein A-I gene transcription. Binds to DNA site A.

NR2F2 antibody - N-terminal region - References

- Ladias J.A.A., et al. Science 251:561-565(1991).
Speckmayer R.W.M., et al. Submitted (OCT-1996) to the EMBL/GenBank/DDBJ databases.
Kobayashi T., et al. FEBS Lett. 582:2737-2744(2008).
Schote A.B., et al. Submitted (AUG-2008) to the EMBL/GenBank/DDBJ databases.
Ota T., et al. Nat. Genet. 36:40-45(2004).