

ETV6 antibody - N-terminal region
Rabbit Polyclonal Antibody
Catalog # AI16243**Specification**

ETV6 antibody - N-terminal region - Product Information

Application	WB
Primary Accession	P41212
Other Accession	NM_001987 , NP_001978
Reactivity	Human, Mouse, Rat, Rabbit, Pig, Horse, Bovine, Guinea Pig, Dog
Predicted	Human, Mouse, Rat, Rabbit, Pig, Chicken, Horse, Bovine, Guinea Pig, Dog
Host	Rabbit
Clonality	Polyclonal
Calculated MW	53kDa KDa

ETV6 antibody - N-terminal region - Additional Information**Gene ID** 2120**Alias Symbol** TEL, TEL/ABL**Other Names**

Transcription factor ETV6, ETS translocation variant 6, ETS-related protein Tel1, Tel, ETV6, TEL, TEL1

Format

Liquid. Purified antibody supplied in 1x PBS buffer with 0.09% (w/v) sodium azide and 2% sucrose.

Reconstitution & Storage

Add 50 ul of distilled water. Final anti-ETV6 antibody concentration is 1 mg/ml in PBS buffer with 2% sucrose. For longer periods of storage, store at 20°C. Avoid repeat freeze-thaw cycles.

Precautions

ETV6 antibody - N-terminal region is for research use only and not for use in diagnostic or therapeutic procedures.

ETV6 antibody - N-terminal region - Protein Information**Name** ETV6**Synonyms** TEL, TEL1**Function**

Transcriptional repressor; binds to the DNA sequence 5'- CCGGAAGT-3'. Plays a role in hematopoiesis and malignant transformation.

Cellular Location

Nucleus.

Tissue Location

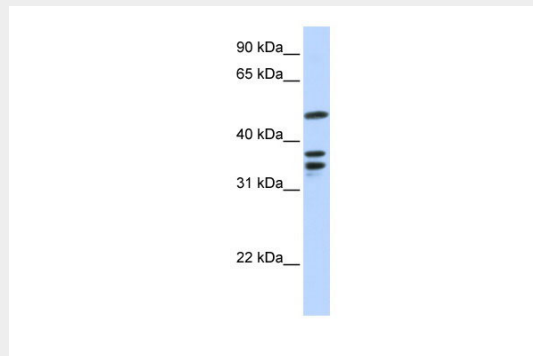
Ubiquitous.

ETV6 antibody - N-terminal region - Protocols

Provided below are standard protocols that you may find useful for product applications.

- [Western Blot](#)
- [Blocking Peptides](#)
- [Dot Blot](#)
- [Immunohistochemistry](#)
- [Immunofluorescence](#)
- [Immunoprecipitation](#)
- [Flow Cytometry](#)
- [Cell Culture](#)

ETV6 antibody - N-terminal region - Images



WB Suggested Anti-ETV6 Antibody Titration: 0.2-1 µg/ml

ELISA Titer: 1:1562500

Positive Control: 721_B cell lysate

ETV6 is supported by BioGPS gene expression data to be expressed in 721_B

ETV6 antibody - N-terminal region - Background

Transcriptional repressor; binds to the DNA sequence 5'- CCGGAAGT-3'.

ETV6 antibody - N-terminal region - References

Golub T.R., et al. Cell 77:307-316(1994).

Ota T., et al. Nat. Genet. 36:40-45(2004).

Mural R.J., et al. Submitted (JUL-2005) to the EMBL/GenBank/DDBJ databases.

Baens M., et al. Genome Res. 6:404-413(1996).

Mullighan C.G., et al. Nature 446:758-764(2007).