

HOXA10 antibody - middle region
Rabbit Polyclonal Antibody
Catalog # AI16240**Specification**

HOXA10 antibody - middle region - Product Information

Application	WB
Primary Accession	P31260
Other Accession	NM_018951 , NP_061824
Reactivity	Mouse, Rabbit, Dog
Predicted	Mouse, Rabbit, Chicken, Dog
Host	Rabbit
Clonality	Polyclonal
Calculated MW	40kDa KDa

HOXA10 antibody - middle region - Additional Information**Gene ID** 3206**Alias Symbol** HOX1, HOX1.8, HOX1H, MGC12859, PL**Other Names**

Homeobox protein Hox-A10, Homeobox protein Hox-1.8, Homeobox protein Hox-1H, PL, HOXA10, HOX1H

Format

Liquid. Purified antibody supplied in 1x PBS buffer with 0.09% (w/v) sodium azide and 2% sucrose.

Reconstitution & Storage

Add 50 ul of distilled water. Final anti-HOXA10 antibody concentration is 1 mg/ml in PBS buffer with 2% sucrose. For longer periods of storage, store at 20°C. Avoid repeat freeze-thaw cycles.

Precautions

HOXA10 antibody - middle region is for research use only and not for use in diagnostic or therapeutic procedures.

HOXA10 antibody - middle region - Protein Information**Name** HOXA10**Synonyms** HOX1H**Function**

Sequence-specific transcription factor which is part of a developmental regulatory system that provides cells with specific positional identities on the anterior-posterior axis. Binds to the DNA sequence 5'-AA[AT]TTTTATTAC-3'.

Cellular Location

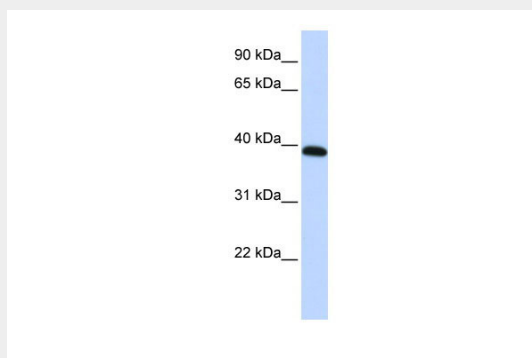
Nucleus.

HOXA10 antibody - middle region - Protocols

Provided below are standard protocols that you may find useful for product applications.

- [Western Blot](#)
- [Blocking Peptides](#)
- [Dot Blot](#)
- [Immunohistochemistry](#)
- [Immunofluorescence](#)
- [Immunoprecipitation](#)
- [Flow Cytometry](#)
- [Cell Culture](#)

HOXA10 antibody - middle region - Images



WB Suggested Anti-HOXA10 Antibody Titration: 0.2-1 µg/ml
ELISA Titer: 1:312500
Positive Control: HepG2 cell lysate

HOXA10 antibody - middle region - Background

Sequence-specific transcription factor which is part of a developmental regulatory system that provides cells with specific positional identities on the anterior-posterior axis. Binds to the DNA sequence 5'-AA[AT]TTTTATTAC-3'.

HOXA10 antibody - middle region - References

Lowney P., et al. *Nucleic Acids Res.* 19:3443-3449(1991).
Mi X., et al. Submitted (DEC-1997) to the EMBL/GenBank/DDBJ databases.
Ota T., et al. *Nat. Genet.* 36:40-45(2004).
Hillier L.W., et al. *Nature* 424:157-164(2003).
Mural R.J., et al. Submitted (JUL-2005) to the EMBL/GenBank/DDBJ databases.