

SOX8 antibody - C-terminal region
Rabbit Polyclonal Antibody
Catalog # AI16236**Specification**

SOX8 antibody - C-terminal region - Product Information

Application	WB
Primary Accession	P57073
Other Accession	NM_014587 , NP_055402
Reactivity	Human, Mouse, Rat, Horse, Bovine, Guinea Pig, Dog
Predicted	Human, Mouse, Rat, Horse, Bovine, Guinea Pig, Dog
Host	Rabbit
Clonality	Polyclonal
Calculated MW	47kDa KDa

SOX8 antibody - C-terminal region - Additional Information**Gene ID** 30812**Alias Symbol** **MGC24837**
Other Names
Transcription factor SOX-8, SOX8**Format**

Liquid. Purified antibody supplied in 1x PBS buffer with 0.09% (w/v) sodium azide and 2% sucrose.

Reconstitution & Storage

Add 50 ul of distilled water. Final anti-SOX8 antibody concentration is 1 mg/ml in PBS buffer with 2% sucrose. For longer periods of storage, store at 20°C. Avoid repeat freeze-thaw cycles.

Precautions

SOX8 antibody - C-terminal region is for research use only and not for use in diagnostic or therapeutic procedures.

SOX8 antibody - C-terminal region - Protein Information**Name** SOX8 {ECO:0000303|Ref.1, ECO:0000312|HGNC:HGNC:11203}**Function**

Transcription factor that may play a role in central nervous system, limb and facial development. May be involved in male sex determination. Binds the consensus motif 5'-[AT][AT]CAA[AT]G-3' (By similarity).

Cellular Location

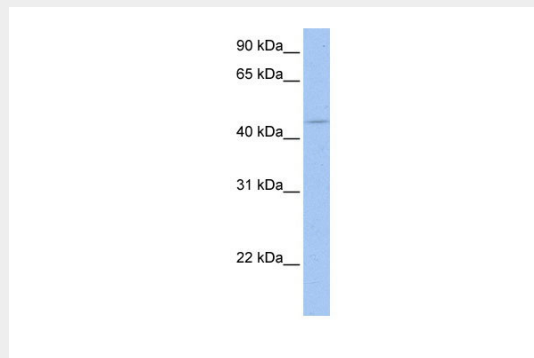
Nucleus {ECO:0000255|PROSITE-ProRule:PRU00267}.

SOX8 antibody - C-terminal region - Protocols

Provided below are standard protocols that you may find useful for product applications.

- [Western Blot](#)
- [Blocking Peptides](#)
- [Dot Blot](#)
- [Immunohistochemistry](#)
- [Immunofluorescence](#)
- [Immunoprecipitation](#)
- [Flow Cytometry](#)
- [Cell Culture](#)

SOX8 antibody - C-terminal region - Images



WB Suggested Anti-SOX8 Antibody Titration: 0.2-1 $\mu\text{g/ml}$
ELISA Titer: 1:12500
Positive Control: Hela cell lysate

SOX8 antibody - C-terminal region - Background

May play a role in central nervous system, limb and facial development. May be involved in male sex determination. Binds the consensus motif 5'-[AT][AT]CAA[AT]G-3' (By similarity).

SOX8 antibody - C-terminal region - References

Cheng Y.-C., et al. Submitted (JAN-2000) to the EMBL/GenBank/DDBJ databases.
Daniels R.J., et al. Hum. Mol. Genet. 10:339-352(2001).
Martin J., et al. Nature 432:988-994(2004).
Pfeifer D., et al. Genomics 63:108-116(2000).