

MAF antibody - middle region
Rabbit Polyclonal Antibody
Catalog # AI16223

Specification

MAF antibody - middle region - Product Information

Application	WB
Primary Accession	O75444-1
Other Accession	NM_005360 , NP_005351
Reactivity	Human, Mouse, Rat, Pig, Horse, Bovine, Guinea Pig, Dog
Predicted	Human, Mouse, Rat, Pig, Chicken, Horse, Bovine, Guinea Pig, Dog
Host	Rabbit
Clonality	Polyclonal
Calculated MW	42kDa KDa

MAF antibody - middle region - Additional Information

Alias Symbol **MGC71685, c-MAF**

Format

Liquid. Purified antibody supplied in 1x PBS buffer with 0.09% (w/v) sodium azide and 2% sucrose.

Reconstitution & Storage

Add 50 ul of distilled water. Final anti-MAF antibody concentration is 1 mg/ml in PBS buffer with 2% sucrose. For longer periods of storage, store at 20°C. Avoid repeat freeze-thaw cycles.

Precautions

MAF antibody - middle region is for research use only and not for use in diagnostic or therapeutic procedures.

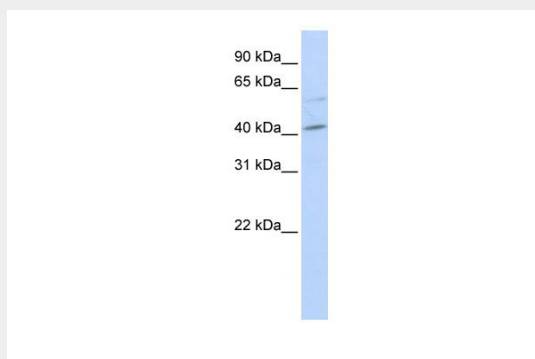
MAF antibody - middle region - Protein Information

MAF antibody - middle region - Protocols

Provided below are standard protocols that you may find useful for product applications.

- [Western Blot](#)
- [Blocking Peptides](#)
- [Dot Blot](#)
- [Immunohistochemistry](#)
- [Immunofluorescence](#)
- [Immunoprecipitation](#)
- [Flow Cytometry](#)
- [Cell Culture](#)

MAF antibody - middle region - Images



WB Suggested Anti-MAF Antibody Titration: 0.2-1 $\mu\text{g/ml}$
ELISA Titer: 1:62500
Positive Control: Hela cell lysate