

**TNFSF12 antibody - N-terminal region**  
**Rabbit Polyclonal Antibody**  
**Catalog # AI16218****Specification**

---

**TNFSF12 antibody - N-terminal region - Product Information**

Application	<b>WB</b>
Primary Accession	<a href="#">O43508</a>
Other Accession	<a href="#">NM_003809</a> , <a href="#">NP_003800</a>
Reactivity	<b>Human, Mouse, Horse</b>
Predicted	<b>Human, Mouse, Horse</b>
Host	<b>Rabbit</b>
Clonality	<b>Polyclonal</b>
Calculated MW	<b>27kDa KDa</b>

**TNFSF12 antibody - N-terminal region - Additional Information****Gene ID** 407977;8742**Alias Symbol** **APO3L, DR3LG, TWEAK****Other Names**

Tumor necrosis factor ligand superfamily member 12, APO3 ligand, TNF-related weak inducer of apoptosis, TWEAK, Tumor necrosis factor ligand superfamily member 12, membrane form, Tumor necrosis factor ligand superfamily member 12, secreted form, TNFSF12, APO3L, DR3LG

**Format**

Liquid. Purified antibody supplied in 1x PBS buffer with 0.09% (w/v) sodium azide and 2% sucrose.

**Reconstitution & Storage**

Add 50 ul of distilled water. Final anti-TNFSF12 antibody concentration is 1 mg/ml in PBS buffer with 2% sucrose. For longer periods of storage, store at 20°C. Avoid repeat freeze-thaw cycles.

**Precautions**

TNFSF12 antibody - N-terminal region is for research use only and not for use in diagnostic or therapeutic procedures.

**TNFSF12 antibody - N-terminal region - Protein Information****Name** TNFSF12**Synonyms** APO3L, DR3LG**Function**

Binds to FN14 and possibly also to TNFSF12/APO3. Weak inducer of apoptosis in some cell types. Mediates NF-kappa-B activation. Promotes angiogenesis and the proliferation of endothelial cells. Also involved in induction of inflammatory cytokines. Promotes IL8 secretion.

**Cellular Location**

Cell membrane; Single-pass type II membrane protein [Isoform TWE-PRIL]: Cell membrane; Single-pass membrane protein

#### Tissue Location

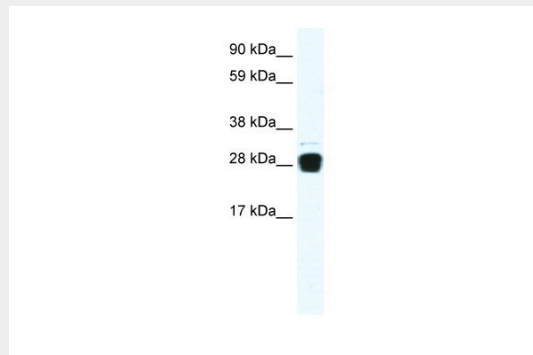
Highly expressed in adult heart, pancreas, skeletal muscle, brain, colon, small intestine, lung, ovary, prostate, spleen, lymph node, appendix and peripheral blood lymphocytes. Low expression in kidney, testis, liver, placenta, thymus and bone marrow. Also detected in fetal kidney, liver, lung and brain

#### TNFSF12 antibody - N-terminal region - Protocols

Provided below are standard protocols that you may find useful for product applications.

- [Western Blot](#)
- [Blocking Peptides](#)
- [Dot Blot](#)
- [Immunohistochemistry](#)
- [Immunofluorescence](#)
- [Immunoprecipitation](#)
- [Flow Cytometry](#)
- [Cell Culture](#)

#### TNFSF12 antibody - N-terminal region - Images



WB Suggested Anti-TNFSF12 Antibody Titration: 0.2-1  $\mu$ g/ml  
ELISA Titer: 1:12500  
Positive Control: Human muscle