

CHRNA7 antibody - N-terminal region
Rabbit Polyclonal Antibody
Catalog # AI16202**Specification**

CHRNA7 antibody - N-terminal region - Product Information

Application	WB
Primary Accession	P36544
Other Accession	NM_000746 , NP_000737
Reactivity	Human, Mouse, Rat, Bovine
Predicted	Human, Mouse, Rat, Chicken, Bovine
Host	Rabbit
Clonality	Polyclonal
Calculated MW	56kDa KDa

CHRNA7 antibody - N-terminal region - Additional Information**Gene ID** 1139;89832**Alias Symbol** NACHRA7, CHRNA7-2**Other Names**

Neuronal acetylcholine receptor subunit alpha-7, CHRNA7, NACHRA7

Format

Liquid. Purified antibody supplied in 1x PBS buffer with 0.09% (w/v) sodium azide and 2% sucrose.

Reconstitution & Storage

Add 100 ul of distilled water. Final anti-CHRNA7 antibody concentration is 1 mg/ml in PBS buffer with 2% sucrose. For longer periods of storage, store at 20°C. Avoid repeat freeze-thaw cycles.

Precautions

CHRNA7 antibody - N-terminal region is for research use only and not for use in diagnostic or therapeutic procedures.

CHRNA7 antibody - N-terminal region - Protein Information**Name** CHRNA7**Synonyms** NACHRA7**Function**

After binding acetylcholine, the AChR responds by an extensive change in conformation that affects all subunits and leads to opening of an ion-conducting channel across the plasma membrane. The channel is blocked by alpha-bungarotoxin.

Cellular Location

Postsynaptic cell membrane; Multi-pass membrane protein. Cell membrane; Multi-pass membrane protein. Note=TMEM35A/NACHO promotes its trafficking to the cell membrane

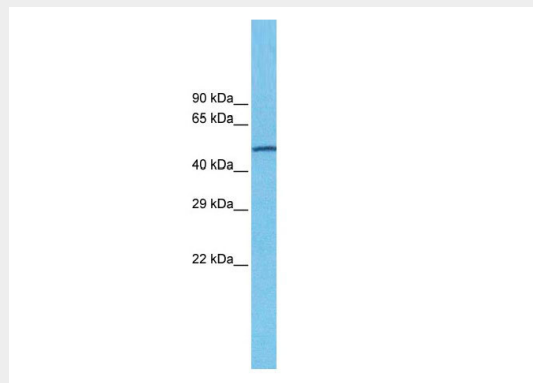
(PubMed:27789755). RIC3 promotes its trafficking to the cell membrane (By similarity)
{ECO:0000250|UniProtKB:Q05941, ECO:0000269|PubMed:27789755}

CHRNA7 antibody - N-terminal region - Protocols

Provided below are standard protocols that you may find useful for product applications.

- [Western Blot](#)
- [Blocking Peptides](#)
- [Dot Blot](#)
- [Immunohistochemistry](#)
- [Immunofluorescence](#)
- [Immunoprecipitation](#)
- [Flow Cytometry](#)
- [Cell Culture](#)

CHRNA7 antibody - N-terminal region - Images



Host: Rabbit
Target Name: CHRNA7
Sample Tissue: MDA-MB-435S Cell lysates
Antibody Dilution: 1.0µg/ml

CHRNA7 antibody - N-terminal region - Background

After binding acetylcholine, the AChR responds by an extensive change in conformation that affects all subunits and leads to opening of an ion-conducting channel across the plasma membrane. The channel is blocked by alpha-bungarotoxin.

CHRNA7 antibody - N-terminal region - References

Peng X., et al. Mol. Pharmacol. 45:546-554(1994).
Logel J., et al. Submitted (DEC-1995) to the EMBL/GenBank/DDBJ databases.
Elliott K.J., et al. J. Mol. Neurosci. 7:217-228(1996).
Groot Kormelink P.J., et al. FEBS Lett. 400:309-314(1997).
Groot Kormelink P.J., et al. Submitted (JAN-1998) to the EMBL/GenBank/DDBJ databases.