

DOK2 antibody - C-terminal region
Rabbit Polyclonal Antibody
Catalog # AI16194**Specification**

DOK2 antibody - C-terminal region - Product Information

Application	WB
Primary Accession	O60496
Other Accession	NM_003974 , NP_003965
Reactivity	Human, Mouse, Rat, Pig, Horse, Bovine, Dog
Predicted	Human, Mouse, Rat, Pig, Horse, Bovine, Dog
Host	Rabbit
Clonality	Polyclonal
Calculated MW	45kDa KDa

DOK2 antibody - C-terminal region - Additional Information**Gene ID** 9046**Alias Symbol** **p56DOK, p56dok-2**
Other Names
Docking protein 2, Downstream of tyrosine kinase 2, p56(dok-2), DOK2**Format**

Liquid. Purified antibody supplied in 1x PBS buffer with 0.09% (w/v) sodium azide and 2% sucrose.

Reconstitution & Storage

Add 50 ul of distilled water. Final anti-DOK2 antibody concentration is 1 mg/ml in PBS buffer with 2% sucrose. For longer periods of storage, store at 20°C. Avoid repeat freeze-thaw cycles.

Precautions

DOK2 antibody - C-terminal region is for research use only and not for use in diagnostic or therapeutic procedures.

DOK2 antibody - C-terminal region - Protein Information**Name** DOK2**Function**

DOK proteins are enzymatically inert adaptor or scaffolding proteins. They provide a docking platform for the assembly of multimolecular signaling complexes. DOK2 may modulate the cellular proliferation induced by IL-4, as well as IL-2 and IL-3. May be involved in modulating Bcr-Abl signaling. Attenuates EGF-stimulated MAP kinase activation (By similarity).

Tissue Location

Highly expressed in peripheral blood leukocytes, lymph nodes and spleen. Lower expression in

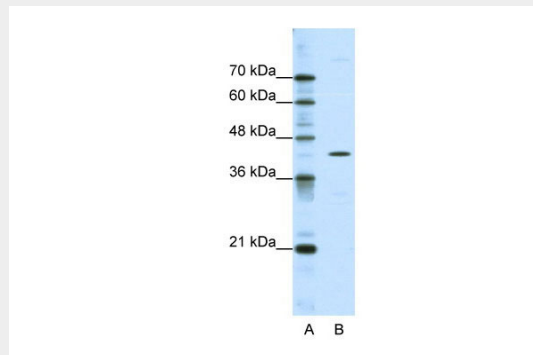
thymus, bone marrow and fetal liver.

DOK2 antibody - C-terminal region - Protocols

Provided below are standard protocols that you may find useful for product applications.

- [Western Blot](#)
- [Blocking Peptides](#)
- [Dot Blot](#)
- [Immunohistochemistry](#)
- [Immunofluorescence](#)
- [Immunoprecipitation](#)
- [Flow Cytometry](#)
- [Cell Culture](#)

DOK2 antibody - C-terminal region - Images



WB Suggested Anti-DOK2 Antibody Titration: 0.2-1 μ g/ml
ELISA Titer: 1:62500
Positive Control: HepG2 cell lysate

DOK2 antibody - C-terminal region - Background

DOK proteins are enzymatically inert adaptor or scaffolding proteins. They provide a docking platform for the assembly of multimolecular signaling complexes. DOK2 may modulate the cellular proliferation induced by IL-4, as well as IL-2 and IL-3. May be involved in modulating Bcr-Abl signaling. Attenuates EGF-stimulated MAP kinase activation (By similarity).

DOK2 antibody - C-terminal region - References

Di Cristofano A., et al. J. Biol. Chem. 273:4827-4830(1998).
Brill L.M., et al. Anal. Chem. 76:2763-2772(2004).
Rush J., et al. Nat. Biotechnol. 23:94-101(2005).
Mayya V., et al. Sci. Signal. 2:RA46-RA46(2009).