

CXCR6 antibody - N-terminal region
Rabbit Polyclonal Antibody
Catalog # AI16187**Specification**

CXCR6 antibody - N-terminal region - Product Information

Application	WB
Primary Accession	O00574
Other Accession	NM_006564 , NP_006555
Reactivity	Human
Predicted	Human
Host	Rabbit
Clonality	Polyclonal
Calculated MW	39kDa KDa

CXCR6 antibody - N-terminal region - Additional Information**Gene ID** 10663**Alias Symbol** **BONZO, CD186, STRL33, TYMSTR****Other Names**

C-X-C chemokine receptor type 6, CXC-R6, CXCR-6, CDw186, G-protein coupled receptor STRL33, G-protein coupled receptor bonzo, CD186, CXCR6, BONZO, STRL33, TYMSTR

Format

Liquid. Purified antibody supplied in 1x PBS buffer with 0.09% (w/v) sodium azide and 2% sucrose.

Reconstitution & Storage

Add 50 ul of distilled water. Final anti-CXCR6 antibody concentration is 1 mg/ml in PBS buffer with 2% sucrose. For longer periods of storage, store at 20°C. Avoid repeat freeze-thaw cycles.

Precautions

CXCR6 antibody - N-terminal region is for research use only and not for use in diagnostic or therapeutic procedures.

CXCR6 antibody - N-terminal region - Protein Information**Name** CXCR6**Synonyms** BONZO, STRL33, TYMSTR**Function**

Receptor for the C-X-C chemokine CXCL16. Used as a coreceptor by SIVs and by strains of HIV-2 and m-tropic HIV-1.

Cellular Location

Cell membrane; Multi-pass membrane protein.

Tissue Location

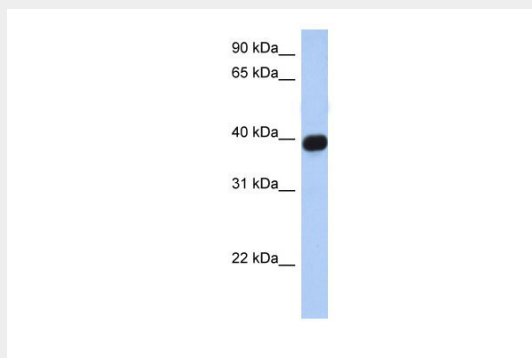
Expressed in lymphoid tissues and activated T cells

CXCR6 antibody - N-terminal region - Protocols

Provided below are standard protocols that you may find useful for product applications.

- [Western Blot](#)
- [Blocking Peptides](#)
- [Dot Blot](#)
- [Immunohistochemistry](#)
- [Immunofluorescence](#)
- [Immunoprecipitation](#)
- [Flow Cytometry](#)
- [Cell Culture](#)

CXCR6 antibody - N-terminal region - Images



WB Suggested Anti-CXCR6 Antibody Titration: 0.2-1 μ g/ml
Positive Control: Human brain

CXCR6 antibody - N-terminal region - Background

Receptor for the C-X-C chemokine CXCL16. Used as a coreceptor by SIVs and by strains of HIV-2 and m-tropic HIV-1.

CXCR6 antibody - N-terminal region - References

Deng H.K., et al. Nature 388:296-300(1997).
Liao F., et al. J. Exp. Med. 185:2015-2023(1997).
Loetscher M., et al. Curr. Biol. 7:652-660(1997).
An P., et al. Submitted (OCT-1997) to the EMBL/GenBank/DDBJ databases.
Kopatz S.A., et al. Submitted (JUN-2003) to the EMBL/GenBank/DDBJ databases.