

**CDK6 antibody - C-terminal region**  
**Rabbit Polyclonal Antibody**  
**Catalog # AI16179**

**Specification**

---

**CDK6 antibody - C-terminal region - Product Information**

Application	WB
Primary Accession	<a href="#">Q00534</a>
Other Accession	<a href="#">NM_001259</a> , <a href="#">NP_001250</a>
Reactivity	Human, Mouse, Rabbit, Pig, Horse, Bovine, Dog
Predicted	Human, Mouse, Rabbit, Pig, Horse, Bovine, Dog
Host	Rabbit
Clonality	Polyclonal
Calculated MW	37kDa KDa

**CDK6 antibody - C-terminal region - Additional Information**

**Gene ID** 1021

**Alias Symbol** MGC59692, PLSTIRE

**Other Names**

Cyclin-dependent kinase 6, 2.7.11.22, Cell division protein kinase 6, Serine/threonine-protein kinase PLSTIRE, CDK6, CDKN6

**Format**

Liquid. Purified antibody supplied in 1x PBS buffer with 0.09% (w/v) sodium azide and 2% sucrose.

**Reconstitution & Storage**

Add 100 ul of distilled water. Final anti-CDK6 antibody concentration is 1 mg/ml in PBS buffer with 2% sucrose. For longer periods of storage, store at 20°C. Avoid repeat freeze-thaw cycles.

**Precautions**

CDK6 antibody - C-terminal region is for research use only and not for use in diagnostic or therapeutic procedures.

**CDK6 antibody - C-terminal region - Protein Information**

**Name** CDK6

**Synonyms** CDKN6

**Function**

Serine/threonine-protein kinase involved in the control of the cell cycle and differentiation; promotes G1/S transition. Phosphorylates pRB/RB1 and NPM1. Interacts with D-type G1 cyclins during interphase at G1 to form a pRB/RB1 kinase and controls the entrance into the cell cycle. Involved in initiation and maintenance of cell cycle exit during cell differentiation; prevents cell

proliferation and negatively regulates cell differentiation, but is required for the proliferation of specific cell types (e.g. erythroid and hematopoietic cells). Essential for cell proliferation within the dentate gyrus of the hippocampus and the subventricular zone of the lateral ventricles. Required during thymocyte development. Promotes the production of newborn neurons, probably by modulating G1 length. Promotes, at least in astrocytes, changes in patterns of gene expression, changes in the actin cytoskeleton including loss of stress fibers, and enhanced motility during cell differentiation. Prevents myeloid differentiation by interfering with RUNX1 and reducing its transcription transactivation activity, but promotes proliferation of normal myeloid progenitors. Delays senescence. Promotes the proliferation of beta-cells in pancreatic islets of Langerhans. May play a role in the centrosome organization during the cell cycle phases (PubMed:<a href="http://www.uniprot.org/citations/23918663" target="\_blank">23918663</a>).

#### Cellular Location

Cytoplasm. Nucleus. Cell projection, ruffle. Cytoplasm, cytoskeleton, microtubule organizing center, centrosome. Note=Localized to the ruffling edge of spreading fibroblasts. Kinase activity only in nucleus. Localized to the cytosol of neurons and showed prominent staining around either side of the nucleus (By similarity). Present in the cytosol and in the nucleus in interphase cells and at the centrosome during mitosis from prophase to telophase (PubMed:23918663). {ECO:0000250|UniProtKB:Q64261, ECO:0000269|PubMed:23918663}

#### Tissue Location

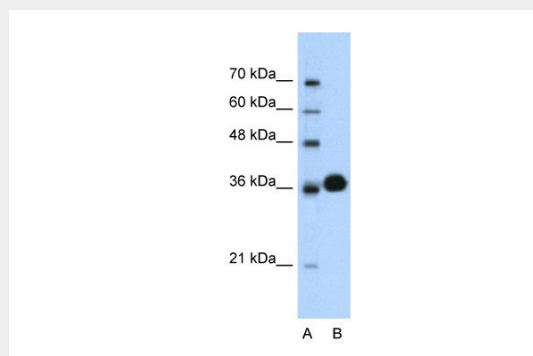
Expressed ubiquitously. Accumulates in squamous cell carcinomas, proliferating hematopoietic progenitor cells, beta- cells of pancreatic islets of Langerhans, and neuroblastomas. Reduced levels in differentiating cells.

#### CDK6 antibody - C-terminal region - Protocols

Provided below are standard protocols that you may find useful for product applications.

- [Western Blot](#)
- [Blocking Peptides](#)
- [Dot Blot](#)
- [Immunohistochemistry](#)
- [Immunofluorescence](#)
- [Immunoprecipitation](#)
- [Flow Cytometry](#)
- [Cell Culture](#)

#### CDK6 antibody - C-terminal region - Images



WB Suggested Anti-CDK6 Antibody Titration: 0.625µg/ml

Positive Control: Jurkat cell lysate

CDK6 is supported by BioGPS gene expression data to be expressed in Jurkat

### **CDK6 antibody - C-terminal region - Background**

Serine/threonine-protein kinase involved in the control of the cell cycle and differentiation; promotes G1/S transition. Phosphorylates pRB/RB1 and NPM1. Interacts with D-type G1 cyclins during interphase at G1 to form a pRB/RB1 kinase and controls the entrance into the cell cycle. Involved in initiation and maintenance of cell cycle exit during cell differentiation; prevents cell proliferation and regulates negatively cell differentiation, but is required for the proliferation of specific cell types (e.g. erythroid and hematopoietic cells). Essential for cell proliferation within the dentate gyrus of the hippocampus and the subventricular zone of the lateral ventricles. Required during thymocyte development. Promotes the production of newborn neurons, probably by modulating G1 length. Promotes, at least in astrocytes, changes in patterns of gene expression, changes in the actin cytoskeleton including loss of stress fibers, and enhanced motility during cell differentiation. Prevents myeloid differentiation by interfering with RUNX1 and reducing its transcription transactivation activity, but promotes proliferation of normal myeloid progenitors. Delays senescence. Promotes the proliferation of beta-cells in pancreatic islets of Langerhans.

### **CDK6 antibody - C-terminal region - References**

Meyerson M., et al. EMBO J. 11:2909-2917(1992).  
Ota T., et al. Nat. Genet. 36:40-45(2004).  
Hillier L.W., et al. Nature 424:157-164(2003).  
Scherer S.W., et al. Science 300:767-772(2003).  
Mural R.J., et al. Submitted (SEP-2005) to the EMBL/GenBank/DDBJ databases.