

SERPINA1 antibody - C-terminal region
Rabbit Polyclonal Antibody
Catalog # AI16165**Specification**

SERPINA1 antibody - C-terminal region - Product Information

Application	IHC, WB
Primary Accession	P01009
Other Accession	NM_000295 , NP_000286
Reactivity	Human
Host	Rabbit
Clonality	Polyclonal
Calculated MW	46kDa KDa

SERPINA1 antibody - C-terminal region - Additional Information**Gene ID** 5265**Alias Symbol** **PI, A1A, AAT, PI1, A1AT, PRO2275, alpha1AT****Other Names**

Alpha-1-antitrypsin, Alpha-1 protease inhibitor, Alpha-1-antiproteinase, Serpin A1, Short peptide from AAT, SPAAT, SERPINA1, AAT, PI

Format

Liquid. Purified antibody supplied in 1x PBS buffer with 0.09% (w/v) sodium azide and 2% sucrose.

Reconstitution & Storage

Add 100 ul of distilled water. Final anti-SERPINA1 antibody concentration is 1 mg/ml in PBS buffer with 2% sucrose. For longer periods of storage, store at 20°C. Avoid repeat freeze-thaw cycles.

Precautions

SERPINA1 antibody - C-terminal region is for research use only and not for use in diagnostic or therapeutic procedures.

SERPINA1 antibody - C-terminal region - Protein Information**Name** SERPINA1 ([HGNC:8941](#))**Synonyms** AAT, PI**Function**

Inhibitor of serine proteases. Its primary target is elastase, but it also has a moderate affinity for plasmin and thrombin. Irreversibly inhibits trypsin, chymotrypsin and plasminogen activator. The aberrant form inhibits insulin-induced NO synthesis in platelets, decreases coagulation time and has proteolytic activity against insulin and plasmin.

Cellular Location

Secreted. Endoplasmic reticulum. Note=The S and Z allele are not secreted effectively and accumulate intracellularly in the endoplasmic reticulum

Tissue Location

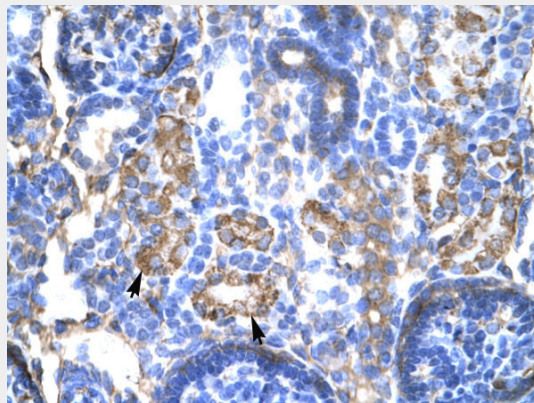
Ubiquitous. Expressed in leukocytes and plasma.

SERPINA1 antibody - C-terminal region - Protocols

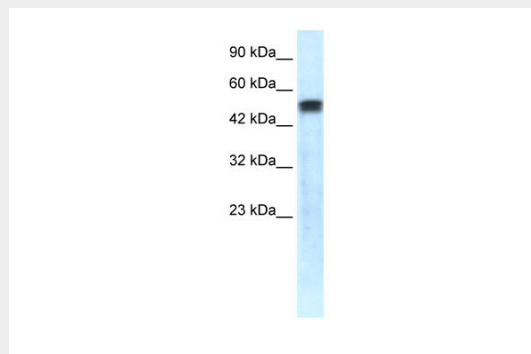
Provided below are standard protocols that you may find useful for product applications.

- [Western Blot](#)
- [Blocking Peptides](#)
- [Dot Blot](#)
- [Immunohistochemistry](#)
- [Immunofluorescence](#)
- [Immunoprecipitation](#)
- [Flow Cytometry](#)
- [Cell Culture](#)

SERPINA1 antibody - C-terminal region - Images



WB Suggested Anti-SERPINA1 Antibody Titration: 4.0-8.0
Positive Control: Human kidney lysate



WB Suggested Anti-SERPINA1 Antibody Titration: 1.25µg/ml
ELISA Titer: 1:12500

Positive Control: HepG2 cell lysate

SERPINA1 is strongly supported by BioGPS gene expression data to be expressed in Human HepG2 cells

SERPINA1 antibody - C-terminal region - Background

Inhibitor of serine proteases. Its primary target is elastase, but it also has a moderate affinity for plasmin and thrombin. Irreversibly inhibits trypsin, chymotrypsin and plasminogen activator. The aberrant form inhibits insulin-induced NO synthesis in platelets, decreases coagulation time and has proteolytic activity against insulin and plasmin.

SERPINA1 antibody - C-terminal region - References

- Bollen A.,et al.DNA 2:255-264(1983).
Long G.L.,et al.Biochemistry 23:4828-4837(1984).
Rosenberg S.,et al.Nature 312:77-80(1984).
Ciliberto G.,et al.Cell 41:531-540(1985).
Nukiwa T.,et al.J. Biol. Chem. 261:15989-15994(1986).