

**KLC1 Antibody - N-terminal region**  
**Rabbit Polyclonal Antibody**  
**Catalog # AI16159****Specification**

---

**KLC1 Antibody - N-terminal region - Product Information**

Application	<b>WB</b>
Primary Accession	<a href="#">Q07866</a>
Reactivity	<b>Human</b>
Host	<b>Rabbit</b>
Clonality	<b>Polyclonal</b>
Calculated MW	<b>63kDa KDa</b>

**KLC1 Antibody - N-terminal region - Additional Information****Gene ID** 3831**Alias Symbol** **KLC1, KLC, KNS2,**  
**Other Names**  
Kinesin light chain 1, KLC 1, KLC1, KLC, KNS2**Format**

Liquid. Purified antibody supplied in 1x PBS buffer with 0.09% (w/v) sodium azide and 2% sucrose.

**Reconstitution & Storage**Add 50  $\mu$ l of distilled water. Final Anti-KLC1 antibody concentration is 1 mg/ml in PBS buffer with 2% sucrose. For longer periods of storage, store at -20°C. Avoid repeat freeze-thaw cycles.**Precautions**

KLC1 Antibody - N-terminal region is for research use only and not for use in diagnostic or therapeutic procedures.

**KLC1 Antibody - N-terminal region - Protein Information****Name** KLC1**Synonyms** KLC, KNS2**Function**Kinesin is a microtubule-associated force-producing protein that may play a role in organelle transport (PubMed: <http://www.uniprot.org/citations/21385839> target="\_blank">21385839</a>). The light chain may function in coupling of cargo to the heavy chain or in the modulation of its ATPase activity (By similarity).**Cellular Location**

Cell projection, growth cone {ECO:0000250|UniProtKB:P37285}. Cytoplasmic vesicle. Cytoplasm, cytoskeleton

### Tissue Location

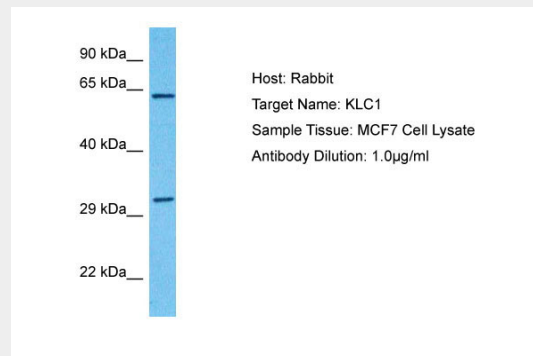
Found in a variety of tissues. Mostly abundant in brain and spine.

### KLC1 Antibody - N-terminal region - Protocols

Provided below are standard protocols that you may find useful for product applications.

- [Western Blot](#)
- [Blocking Peptides](#)
- [Dot Blot](#)
- [Immunohistochemistry](#)
- [Immunofluorescence](#)
- [Immunoprecipitation](#)
- [Flow Cytometry](#)
- [Cell Culture](#)

### KLC1 Antibody - N-terminal region - Images



Host: Rabbit  
Target Name: KLC1  
Sample Tissue: MCF7 Whole Cell lysates  
Antibody Dilution: 1.0µg/ml

### KLC1 Antibody - N-terminal region - Background

Kinesin is a microtubule-associated force-producing protein that may play a role in organelle transport. The light chain may function in coupling of cargo to the heavy chain or in the modulation of its ATPase activity.

### KLC1 Antibody - N-terminal region - References

- Cabeza-Arvelaiz Y., et al. *DNA Cell Biol.* 12:881-892(1993).  
McCart A.E., et al. *Traffic* 4:576-580(2003).  
Gerber S., et al. Submitted (MAY-2000) to the EMBL/GenBank/DDBJ databases.  
Heilig R., et al. *Nature* 421:601-607(2003).  
Mural R.J., et al. Submitted (JUL-2005) to the EMBL/GenBank/DDBJ databases.