

**KLF5 Antibody - C-terminal region**  
**Rabbit Polyclonal Antibody**  
**Catalog # AI16155****Specification**

---

**KLF5 Antibody - C-terminal region - Product Information**

Application	<b>WB</b>
Primary Accession	<a href="#">Q13887</a>
Reactivity	<b>Human</b>
Host	<b>Rabbit</b>
Clonality	<b>Polyclonal</b>
Calculated MW	<b>50kDa KDa</b>

**KLF5 Antibody - C-terminal region - Additional Information****Gene ID** 688**Alias Symbol** **KLF5, BTEB2, CKLF, IKLF,**  
**Other Names**

Krueppel-like factor 5, Basic transcription element-binding protein 2, BTE-binding protein 2, Colon krueppel-like factor, GC-box-binding protein 2, Intestinal-enriched krueppel-like factor, Transcription factor BTEB2, KLF5, BTEB2, CKLF, IKLF

**Format**

Liquid. Purified antibody supplied in 1x PBS buffer with 0.09% (w/v) sodium azide and 2% sucrose.

**Reconstitution & Storage**Add 50  $\mu$ l of distilled water. Final Anti-KLF5 antibody concentration is 1 mg/ml in PBS buffer with 2% sucrose. For longer periods of storage, store at -20°C. Avoid repeat freeze-thaw cycles.**Precautions**

KLF5 Antibody - C-terminal region is for research use only and not for use in diagnostic or therapeutic procedures.

**KLF5 Antibody - C-terminal region - Protein Information****Name** KLF5**Synonyms** BTEB2, CKLF, IKLF**Function**

Transcription factor that binds to GC box promoter elements. Activates the transcription of these genes.

**Cellular Location**

Nucleus.

**Tissue Location**

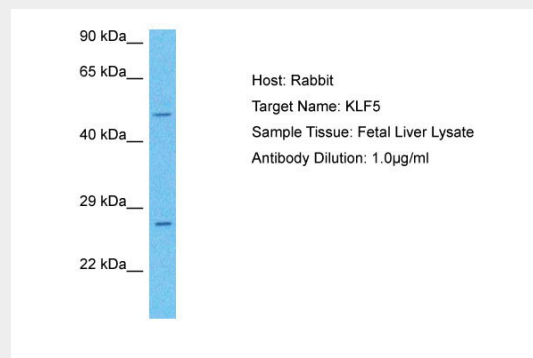
Expressed only in testis and placenta.

### **KLF5 Antibody - C-terminal region - Protocols**

Provided below are standard protocols that you may find useful for product applications.

- [Western Blot](#)
- [Blocking Peptides](#)
- [Dot Blot](#)
- [Immunohistochemistry](#)
- [Immunofluorescence](#)
- [Immunoprecipitation](#)
- [Flow Cytometry](#)
- [Cell Culture](#)

### **KLF5 Antibody - C-terminal region - Images**



Host: Rabbit  
Target Name: KLF5  
Sample Tissue: Fetal Liver lysates  
Antibody Dilution: 1.0µg/ml

### **KLF5 Antibody - C-terminal region - Background**

Transcription factor that binds to GC box promoter elements. Activates the transcription of these genes.

### **KLF5 Antibody - C-terminal region - References**

- Shi H., et al. *Nucleic Acids Res.* 27:4807-4815(1999).  
Camacho-Vanegas O., et al. *FASEB J.* 27:432-436(2013).  
Ohnishi S., et al. Submitted (AUG-1999) to the EMBL/GenBank/DDBJ databases.  
Sur I., et al. Submitted (JUL-2000) to the EMBL/GenBank/DDBJ databases.  
Sogawa K., et al. *Nucleic Acids Res.* 21:1527-1532(1993).