

DRG1 Antibody - middle region
Rabbit Polyclonal Antibody
Catalog # AI16149**Specification**

DRG1 Antibody - middle region - Product Information

Application	WB
Primary Accession	O9Y295
Reactivity	Human
Host	Rabbit
Clonality	Polyclonal
Calculated MW	40kDa KDa

DRG1 Antibody - middle region - Additional Information**Gene ID** 4733**Alias Symbol** DRG1, NEDD3,
Other Names

Developmentally-regulated GTP-binding protein 1, DRG-1, Neural precursor cell expressed developmentally down-regulated protein 3, NEDD-3, DRG1, NEDD3

Format

Liquid. Purified antibody supplied in 1x PBS buffer with 0.09% (w/v) sodium azide and 2% sucrose.

Reconstitution & StorageAdd 50 μ l of distilled water. Final Anti-DRG1 antibody concentration is 1 mg/ml in PBS buffer with 2% sucrose. For longer periods of storage, store at -20°C. Avoid repeat freeze-thaw cycles.**Precautions**

DRG1 Antibody - middle region is for research use only and not for use in diagnostic or therapeutic procedures.

DRG1 Antibody - middle region - Protein Information**Name** DRG1 {ECO:0000303|PubMed:29915238, ECO:0000312|HGNC:HGNC:3029}**Function**Catalyzes the conversion of GTP to GDP through hydrolysis of the gamma-phosphate bond in GTP (PubMed:[23711155](http://www.uniprot.org/citations/23711155)), PubMed:[29915238](http://www.uniprot.org/citations/29915238), PubMed:[37179472](http://www.uniprot.org/citations/37179472)). Appears to have an intrinsic GTPase activity that is stimulated by ZC3H15/DFRP1 binding likely by increasing the affinity for the potassium ions (PubMed:[23711155](http://www.uniprot.org/citations/23711155)). When hydroxylated at C-3 of 'Lys-22' by JMJD7, may bind to RNA and play a role in translation (PubMed:[19819225](http://www.uniprot.org/citations/19819225), PubMed:[29915238](http://www.uniprot.org/citations/29915238)).

Binds to microtubules and promotes microtubule polymerization and stability that are required for mitotic spindle assembly during prophase to anaphase transition. GTPase activity is not necessary for these microtubule-related functions (PubMed:28855639).

Cellular Location

Nucleus. Cytoplasm. Note=The DRG1-ZC3H15/DFRP1 complex associates with polysomes

Tissue Location

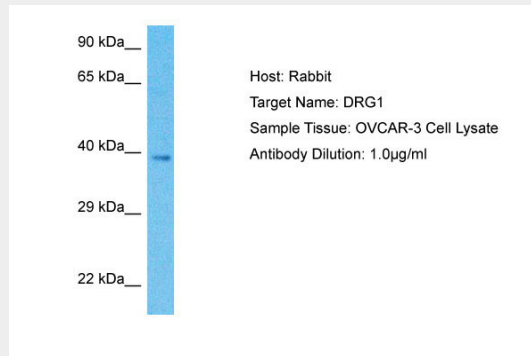
High levels in skeletal muscle, heart, and kidney. Intermediate levels in liver, placenta and brain. Low levels in colon, thymus, spleen, small intestine, lung and leukocytes

DRG1 Antibody - middle region - Protocols

Provided below are standard protocols that you may find useful for product applications.

- [Western Blot](#)
- [Blocking Peptides](#)
- [Dot Blot](#)
- [Immunohistochemistry](#)
- [Immunofluorescence](#)
- [Immunoprecipitation](#)
- [Flow Cytometry](#)
- [Cell Culture](#)

DRG1 Antibody - middle region - Images



Host: Rabbit
Target Name: DRG1
Sample Tissue: OVCAR-3 Whole Cell lysates
Antibody Dilution: 1.0µg/ml

DRG1 Antibody - middle region - Background

Critical regulator of cell growth under specific conditions. Implicated in differentiation and cell cycle arrest.

DRG1 Antibody - middle region - References

Zhao X.-F., et al. *Biochim. Biophys. Acta* 1448:109-114(1998).
Li B., et al. *Biochim. Biophys. Acta* 1491:196-204(2000).
Collins J.E., et al. *Genome Biol.* 5:R84.1-R84.11(2004).
Kalnina N., et al. Submitted (MAY-2003) to the EMBL/GenBank/DDBJ databases.

Ota T., et al. Nat. Genet. 36:40-45(2004).